

New for 2018... Selling in Mt. Hope Event Center - Adjacent to Auction Grounds

Warehouse Closing - \$750,000 Worth of New Tool Consignments - Thurs., Sept. 20th, 10AM to 6PM

\$750,000 worth of new tool consignments from a warehouse closing. These are not rejects or returns... folks these are brand new!

AUCTION NOTICE!

THIS AUCTION BEGINS early with 200 lots selling ONLINE ONLY, starting August 25th and ending September 15th. Pickup purchases September 20th & 21st at the auction, if preferred.

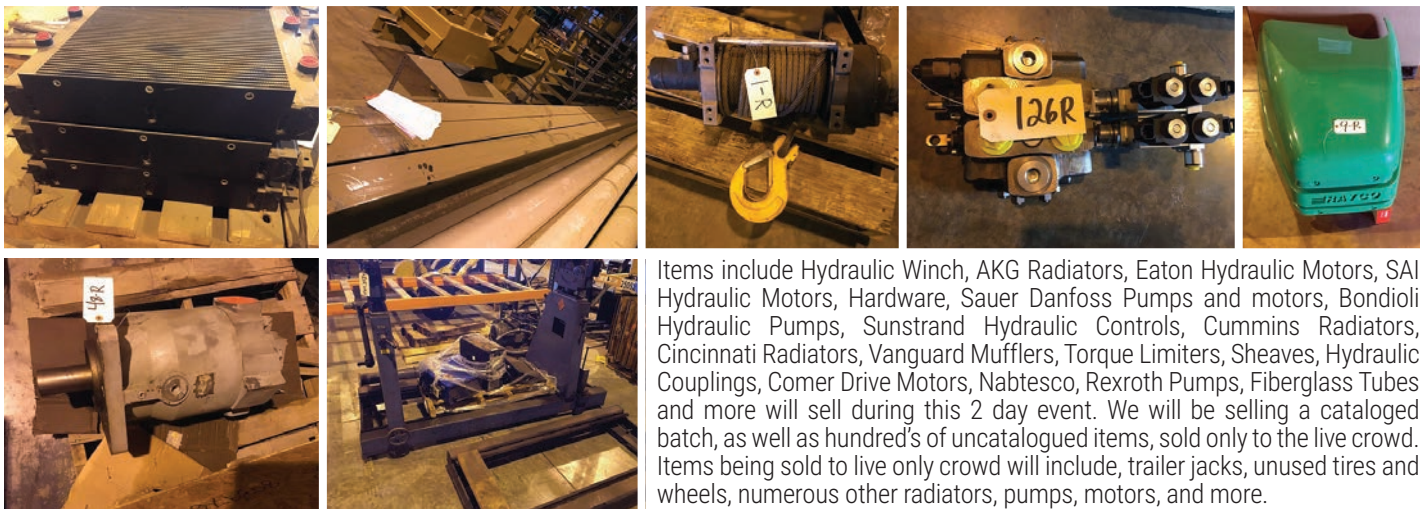
These tools include (all new) Irwin vise grips, chalk lines, chalk, C-clamps, vises, levels, step ladders, aluminum extension ladders, bar clamps (all sizes) Norton sand paper, pallet of 3" and 4" sanding belts, Pro's choice brooms, Diablo hole saws, Skil cordless drills, 1.5 ton floor jacks, Milwaukee hand saws, hole saws, pliers,

socket sets, CMT router bits, Marshalltown cement tools, orange & yellow safety coats, drill bits, saw blades, hard hats, cement blades, pallet of caution flags, pallet of KOBE bearings, Morse bandsaw blades and much more, this is just a sampling of whats selling. Lots more to go through!



Large Local Manufacturer Auctioning Excess Components - Thurs., Sept. 20th @ Noon (Live/Online)

Overstock, Remanufactured, and Unused Hydraulic and Commercial Industrial Parts



Items include Hydraulic Winch, AKG Radiators, Eaton Hydraulic Motors, SAI Hydraulic Motors, Hardware, Sauer Danfoss Pumps and motors, Bondioli Hydraulic Pumps, Sunstrand Hydraulic Controls, Cummins Radiators, Cincinnati Radiators, Vanguard Mufflers, Torque Limiters, Sheaves, Hydraulic Couplings, Comer Drive Motors, Nabtesco, Rexroth Pumps, Fiberglass Tubes and more will sell during this 2 day event. We will be selling a cataloged batch, as well as hundred's of uncatalogued items, sold only to the live crowd. Items being sold to live only crowd will include, trailer jacks, unused tires and wheels, numerous other radiators, pumps, motors, and more.

Large Collection of Antique Hit-N-Miss Engines & Antiques - Fri., Sept. 21st, 6PM to 8PM (Live/Online)

A nice consignment of one man's private collection... Check out the 1910 New Holland 5HP buzz saw rig

Including 1910 New Holland 5HP buzz saw rig. 19 antique hit and miss engines including domestic 5 HP side shaft w/air compressor side by side, Massey Harris type 2 1-1/2HP, Massey Harris 3HP, Fairmont 5HP rail car engine, Cushman 4 HP, Delavel 1-1/2 HP, Novo 2HP, Monitor type VJ w/water pump. Plus 4-engines on display trailer to sell separate, then as a package (and selling they way that nets most.) These include 1927 Witte type F HP, 1936 Stover type CT-2 2HP, 1939 Stover type CT-1 1-1/2HP, 1917 Alamo 1-1/2HP, and tandem 5X14 display trailer.



AUCTION NOTE: Large Consignment of Brand New DeWalt Tools Sells Thur. Sept. 20th at 6:00 PM & Fri. Sept. 21st at Noon.: We will have another very nice line-up of DeWalt cordless power tools to sell including some of the latest and greatest models and tools that DeWalt has to offer with all warranties intact. (Approx. \$50,000.00 worth of new tools) We will also have lots of new Milwaukee and Makita tools to offer as well.



John Deere 730



1996 International w/CAT 485



Mustang MTL20 Loader



Toyota 626FD25 Forklift



1980 Condor 406N
40' Manlift



2016 Rayco
RH1754-20 Grinder



Frick Carriage



A-G TruCut
Bandmill Hd. Rig



Shop Fox Sliding Table Saw



Northtech 36"
Wide Belt Sander



2004 Lobo 5x5 Moulder



NEW Oliver 0008 8"
Parallelogram Jointer



Wakaushau 150KW
Natural Gas GenSet



50' Gooseneck Cargo Trailer



Allen 1200
Riding Trowel



Tiny House



JD Corn Sheller



Letz Burr Mill



5x5 Vertical
Steam Engine



2017 JD 332G Skid Steer

One of two 2017 JD 332G skid loaders fully loaded w/cab heat & air, air ride and everything else possible! 125 & 900 hrs.

HEAVY EQUIPMENT/ROLLING STOCK. Sells Online/

Live Friday Sept. 21st. Dozers & Excavators:

John Deere 450-C sn334985T crawler loader w/bucket & forks; **Chippers & Grinders:** 2016 Rayco RH1754-240 Horizontal Grinder, 240 HP; (2) 2013 Rayco RC1220G Chippers, 85 HP; 2014 Rayco RC6D25 chipper; **Telehandlers:** Ingersoll Rand VR-642 telehandler 110 hp. (serial number 155479); Manitou MT-431CP, 4x4 telehandler, cab, heat; **Forklifts:** Toyota 626FD25 forklift, 5000 lb, 4' forks; Clark GCS17 3200 lb. forklift, LP Gas, 3 stage, cushion tires; **Manlifts:** 1980 Condor model 4046N, 40' manlift, L/P gas; JLG all-terrain, gas scissor lift; **Skid Steers:** (2) 2017 John Deere 332G skid steers, loaded w/cab, heat, air ride etc, one has 125 hrs, the other has 900 hrs; Bobcat 873 skid steer; Bobcat 974 skid steer w/bucket & forks, newer 92 hp Perkins engine, solid rubber tires; Mustang MTL20 skid steer (3200 hrs.) good rubber tracks; **Wheel Loaders:** Case W11 wheel loader w/New engine, rebuilt center pivot; Kubota R510, 4x4 wheel loader w/bucket and forks; Massey Ferguson 6500 loader, runs & starts good, good condition; **Log Loaders:** Hood 24,000 log loader w/John Deere engine; **Trucks & Trailers:** 1999 Ford F450XL, diesel truck, 177,440 miles, dually w/service bed; 2001 Ford F250, 73 diesel, 4 door crew cab, 200,000 miles, 8' white bed, new transmission w/100,000 mile warranty; 1993 Step deck, 50' tri axle trailer, in A1 condition w/one air axle, new brakes & drums, new air lines & tank, new LED lights & wiring harness, new wheels; 2012 Appalachian 40' gooseneck trailer, tandem axle, electric brake; 1986 Trailmobile F7CT 44' drop deck trailer; 1990 Chevy Kodiak 7500 Western Elite Hauler w/3116 Cat engine, Std. Eaton 10 speed transmission, 227,000 miles; 2007 Ford F150XLT pick up truck, extension cab, 182,000 miles; 1996 International semi tractor w/Cat 485 engine, newer rear end, rebuilt transmission; 2007 Water and Land

Mfg 40' gooseneck cargo trailer, 14,000 lb. GVW, new tires, awning and living quarters; **Misc. Rolling Stock Related:** Equipter RV4000 Shingle Buggy; Ferguson 30 tractor; Stack of 4' x 16' oil field mats, grade A. More equipment rolling in on a daily basis.

POWER UNITS & COMPRESSORS: Sells on Friday

Sept. 21st. Wakaushau natural gas genset, 150 kw, 208 original hrs, puts out the rated power, runs good no reserve; Ford natural gas genset, 45 kw, model 45EM, 400 hrs, like new condition; Lister Petter 42kw genset; John Deere 6081 diesel, 225 hp power unit w/Funk reversible clutch; Duetz BF6L513RC 250 hp diesel w/clutch; Detroit 50 series, 320 hp diesel w/clutch; Rebuilt MWM 120 hp diesel w/clutch; Rebuilt Case model 188, 50 hp diesel w/clutch; Perkins 42 hp diesel w/clutch; Lister Petter 4LPWT 40 hp diesel engine; Kubota D1105, D850 and D722 diesel engines; Atlas Copco GA37 screw air compressor; Quincy 75 hp air compressor; 500 Gallon tank; Briggs & Stratton 20 kw generator w/Vanguard motor, low hrs, works good; Tiger Power 10,000 watt PTO generator, on wheels, works good.

PALLET SHOP, LOGGING & SAWMILL EQUIPMENT:

Sells Online/Live Thurs. & Fri. Sept. 20 & 21st. The following is a complete cut stock operation ready for production; Baker 3 head resaw w/return, lineshaft included + Morgan 4 head trim saw, lineshaft ready + Morgan deduster w/Honda motor + Rollcase and more; Sawmills: NEW AG TruCut Original 42" band mill head rig, (will be in the trade show and will sell on Thur. at approx. 6 PM); Frick 0-156" mill includes Tyrone berry drive, air dogs and kickers, manual set works, also 40 ft. track with an additional 20 ft. selling separate; Frick 56" complete right hand mill, log trough w/2 way kicker, rails and controls; Corley 60" wood frame mill w/40' track & manual set-works; Tyrone Berry model 240 carriage drive, includes hyd. Power unit, drum package and cable drive; Older 36" bandsaw; 60" sawmill blade; Screen; 2011 Rotex screen, sn R20119; Chippers; Morbark 83" chipper, sn 445; Edgers; Cornell 2-blade edger (adjustable); Heavy duty shop built 4 x 36 edger w/3 blades - 1 adj, infeed and outfeed tables; Meadows 4 x 36 - 3 blade edger, 2 blades adjustable, completely rebuilt; Bull 6 x 48 edger; Reihl Steel 4 x 24, 2 blade edger w/1 movable blade; Edger/Gang saw combo; Resaws; Keystone 2 head resaw w/run around, good condition; Double head Baker resaw. w-pressure infeed rollers; Trim Saws; Pendu 10" trim saw; CTR 18' buck saw; 24" shop built chop saw, lineshaft ready; Automatic slab saw, almost new

20 hp Honda w/electric start, made by Flack Hill Mfg; Stackers; Pendu 4400 H.D. stacker; Deduster; Golden Eagle deduster, hyd, good condition; Morgan deduster w/plastic brushes; Log Turners; Cornell log turner; Ross log turner; Debarkers; 36" Mellott Rosserhead Debarker w-self/contained hyd. unit, rebuilt and in excellent condition; Gang Saws; Quality Machine 6 x24 single arbor gang saw w/power infeed table, extra blades, spacers; Lobo gang rip, model SYC-101-20, sn854421, 60 hp, 230v, 3 phase; older cast iron straight line rip saw; Barn Sweeps; 50' Cornell Barn sweep w-incline, excellent condition; Notchers; Hazeldine double head notcher w/air cylinders; Blowers; 40 hp blower; 2010 Troyer Machine 36" blower; Troyer Machine 15" blower w/stainless steel paddles; Misc. Sawmill Related Items; New Creekside 1 yd., 1 1/2 yd., 2 yd., 2 1/2 yd., dumpsters; New Creekside quick attach dumpster and new open end dump hopper; 56 in. sawmill blade; 20 HP electric motors; Self contained hyd. unit, in excellent condition; 50 HP twin hyd. unit, w-350 gallon reservoir, pressure comp pumps; Challenger 24" top feed grinder w/bottom discharge; Hazelthorn chamfering machine, 480v; 5 section roll case, 65' long; Model 4045TWR50 Log loader grapple; 2012 Albright 5' x 5' natural gas radiator.

METALWORKING EQUIPMENT: Sells on Thursday

Sept. 20th. Metal cutting band saw; Cutmaster 38, plasma cutter, like new; Lincoln electric 185 tig welder w/argon gas, like new; Lincoln Ranger 8 electric welder w/Kohler 20 hp motor; Clark sand blast cabinet; Johnson gas furnace w/melting pots & accessories; Portable sand blaster; Clausing 1501, 15 x 48 engine lathe and more.

WOODWORKING EQUIPMENT: Sells Online/Live

Friday Sept. 21st (Multiple Rings). Table Saws:

NEW-Oliver 4016 10" table saw w/52" fence; Delta 10" Unisaw, lineshaft driven; Delta 10" Unisaw w/electric motor; Shop Fox W1811 sliding table saw; Powermatic model 66 table saw w/53" Biesmeyer fence; Mini Max SC3 sliding table saw; Powermatic model 66 table saw; Jet model JTAS-10XL-3 10" table saw w/overhead vacuum/blade guard, w/electric motor; 10" Jet ProShop table saw, 1 3/4 hp motor; Delta 10" Unisaw w/52" Fence 230v; Mini Max table saw w/sliding table; Older 10" Delta Unisaw, lineshaft ready; Delta 10" Unisaw; **Cutoff Saws:** 3-Whirlwind 212L upcut saws; Omega radial arm saw, 230v; Omega RN450 radial arm saw w/12" flex shaft; Dewalt radial arm saw GR54, 29" cut; **Bandsaws:** NEW-Oliver 4630 18" bandsaw;



Frick Mill



Baker Resaw

Morbark 83"
Stationary Chipper

Morbark 40HP Blower



1993 Step Deck Trailer



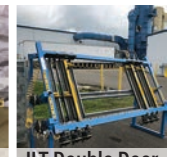
NEW Oliver 4016 10" Table Saw

NEW Oliver 4705
Spindle ShaperSCM T45 1-1/4"
Spindle Shaper

Newer Northfield 36" Planer



Powermatic #66 Table Saw

JLT Double Door
Clamp

Rockwell 20" bandsaw, lineshaft driven; Rockwell/Delta 20" band saw hydraulic power; **Planers:** NEW-Stonewood STC-760 30" planer w/spiral (shear cut) cutter head and sectional infeed rollers; NEW-Stonewood 24" planer w/spiral (shear cut) cutter head; 36" Northfield Planer, only one sharpening on new knives, Hyd. Driven, very good condition, 1 owner; Powermatic 18" spiral head planer, shear cut, 230v/460v; Bridgewood 20" straight knife planer, w/air clutch, lineshaft ready; Accura 24" spiral head planer lineshaft w/cable clutch; Whitney 7 x 30 double head planer, model S-970, sn18405, spiral heads, 50 hp, 230v, 3 phase; Grizzly 20" planer 220v; Accura Planer 24" Spiral head, Line shaft; Wood Master 24" Planer Straight knife, line shaft; Oliver 4455 22" Spiral head planer, 230v 3-phase; **Jointers:** NEW-Oliver 0008 8" parallelogram jointer w/byrd cutter head; NEW-Oliver 0006 6" jointer w/byrd spiral cutter head; Shapers: NEW-Oliver 4705 1 1/4" spindle shaper; NEW-SCM T45W 1 1/4" spindle shaper; Powermatic model 26 3/4" spindle shaper; Delta 3/4" spindle shaper; Accura 1-1/4" shaper, Line shaft power; **Molders:** Note; these molders and other woodworking pieces come from a flooring shop liquidation; 2004 Lobo 5 x 5 molder, sn200412001, model MB4015x5, 4 side 5 head, 34.45kw, 3 phase; 1994 Lobo 6 x 9 Molder, model SYC-8230, 4 side 5 head, 230v, 3 phase; **Lathes:** Sanders: NEW-Oliver 6305 6" x 89" edge sander; Edge sander 8" x 120 custom build, Hydraulic powered; Pneumatic drum sander w/air motor; Older belt sander; **Wide Belt Sanders:** SCMI 36" wide belt sander, 2-hd, 230V/480V; Northtech 200 series 37" 2-head wide belt sander; 26" Steel City drum sander, lineshaft ready; **Boring Machines:** Ritter 2 spindle boring machine w/extra bits; Kreg pocket hole machine, air powered; Silver Doweller, 2 spindle, lineshaft ready; Busellato Velox FL1 dowel machine; **Mortise & Tenoners:** Unique 250 MC raised panel door machine; Double coping machine for cabinet doors; Ballestrini double sided slot mortise, lineshaft driven; Ballestrini double sided tenoner, lineshaft driven; Maka mortiser for cabinet face frames; Doucet copy end matcher, w/28' shop built bed, 23 hp, 230v, 3 phase; **Edge Banders:** Automatic bander, 110v; **Dust Collectors:** NEW-Oliver 7150 cyclone dust collector w/secondary filter & remote starter; NEW-Whirlwind 14" sawdust blower, belt drive; NEW-Whirlwind 18" sawdust blower, belt drive; Torit Dryflo DMC-D2 dust collector; 20" sawdust blower, 20 hp, 3 phase; JDS model MV500-101-3 portable dust collector, 1 1/2 hp electric motor; **Drill Presses:** Delta 15" floor model drill press w/motor; Delta 15" bench top drill press w/stand; Six spindle chair bow drilling machine; **Door & Drawer Clamps:** JLT 79K-8-DDC double door clamp, excellent condition; **Misc. Woodworking:** 1990 Made in Italy pin router, sn21565, 3 phase, 6 pin sizes, spare drive belt, 2 collets, used very little, works good; Double end chucker w/cutoff; Tiger

stop fence/parts only; Presto air powered pallet lift; 2-Porter carving machines; Note: we will have lots of new woodworking machinery as well as a complete flooring manufacturing liquidation.

BUILDING MATERIALS & SHEDS: Sells on Fri. Sept. 21st. Semi load of interior doors & trim; 12' x 24' tiny house w/bathroom, cabinets, porch, wired; several small storage buildings as well as miscellaneous lots of lumber and building materials. Windows & Doors include exterior & interior entry doors; windows including vinyl and wood. (semi load of misc. interior trims, molding & pre-hung interior doors.)

MISCELLANEOUS CONSIGNMENTS & SMALLS.

Sells on Thursday & Friday Sept. 20th & 21st. 2000 Allen Pro 1200 ride on power trowel w/22 hp Kawasaki engine 140 hrs.; Ridgid 535 threader; Ridgid oiler; Ridgid tubing cutter & buffer; Electric pallet shrink wrapper; Skat cabinet blaster w/shop vac dust system; Hand pipe threader set; Portapower set; NH grain mill; 3-ice crushers; Red Chief grain mill; Greenbull 24' aluminum stage; Automatic bander, 110v; Woodmaster 4400 outdoor boiler; 1000's of misc. small items: including air compressors, generators, welders, pressure washers, sand blasters, pallet jacks, electric motors, dust collecting systems, chop saws, electric & air tools, wrenches & socket sets, threaders, clamps, lights, chainsaws, ladders, carpenter, mason, and concrete tools, shelving, work benches, fasteners, extension cords, air hoses, wiring, wagons, wheelbarrows, garden carts, wheels, line-shafts, garden tools, 48' long sections of bolt display bins w/ bolts; metal stackable crates; plus much more.

ANTIQUES & COLLECTIBLES. Sells Thursday & Friday Sept. 20th & 21st. Antiques Selling Live with simulcast online bidding available at www.airworksauction.com Thur. Sept. 20th at 6:00 PM.

Antique John Deere model 730 tractor sn12786 w/new tires, foot clutch, 24 volt start, diesel, full cab, good condition, runs nice; This is a Large Private Collection of Hit n Miss Engines. Includes 19 antique hit and miss engines including 1910 new Holland 5 hp. buss saw rig; Massey Harris type 2, 1 1/2 hp; Domestic side shaft 5 hp w/air compressor side by side; Alamo 1917, 1 1/2 hp; Stover 1939 type CT-1, 1 1/2 to 2 hp; Stover1936 type CT-2, 2 hp; Witte 1927 type F 2 hp; 5 x 14 tandem trailer w/racks; trailer package w/4 engines; vertical International Famous 2 hp; Fairmont 5 hp rail car engine; Cushman 4 hp; Monitor type VJ w/water pump; Novo 2 hp; International LB 3 to 5 hp; Delavel 1 1/2 hp; Massey Harris 3 hp; NH 1910 5 hp buss saw rig; JD parts engine (missing parts); Fairbanks 2 hp; International 1 1/2 to 2 1/2 hp (missing mag); Stover parts engine; Witte 4 hp parts engine; older engine hand start; trailrite portable generator; the politians dream (all wood); Smaller vertical stationary steam engine, 3" bore; American Blower Co #5575, 5 x 5 stationary steam engine; Older stationary 4 x 4 vertical steam

engine; Fairmont Railroad engine, 5 hp, Type RD; Hit & Miss engine cart, 4 wheels; Economy Hit & Miss engine, 3 hp, runs great; Economy Hit & Miss engine, runs great; Letz Burr Mill, all nice, original; 14" Stone Mill, original; JD corn sheller, original wood side boards; JD corn sheller, galvanized sides and other misc. antiques & collectibles. **Antiques & Collectibles, Selling all Day Fri. Sept. 21st:** Enterprise stuffers and grinders; Cast iron Skillet; Dazey Butter Churns; planes; flashlights; hatchet and axes Variety of Crocks; Egg Baskets; Dough Bowls, Water Pumps; Wash Machines, corn dryers; adzes; broad axes; hay pulleys; hog oilers; bench and post vises; ice tongs; several hay, straw, and silage forks; barn beam drills; blacksmith tongues; bit sets and much more. 100+ Collectible Toys: Including 4 - 1/16 scale thrashing machines, McCormick, Case, Red River and Dion; 1950 Covered wagon w/horses; New Idea manure spreader; Hitch wagon w/Belgian horses; Box wagon w/horses; McCormick Deering corn binder; McCormick Deering sickle bar mower; Massey Harris dump rake; (5) 1/16 scale Ertl Tractors, Case 500, Case 800, Massey Harris 44, International 600 diesel, JD R; JL 1/16 scale steam engine; plus many more. 3' x 3' Porcelain sign, Mt Hope Hardware, Mt Hope Ohio, Sherwin Williams Paint; Antique pedal grindstone; 30 - Louis Lamour books; Misc. collectible books.

AIR WORKS

CONSIGNMENT AUCTION LTD.



PO Box 242 • Kidron OH 44636
330.749.4362 (Office) • 330.816.0006 (Fax)
AirWorksAuction.com

TERMS: Cash, Check or Credit Card w/valid ID. There will be a 5% buyer's premium on-site with an additional 3% for all credit card purchases. Different terms for Online bidding will apply. All items are sold "as is, where is with no warranty expressed or implied." Sales tax does apply unless exempt.



PLAN NOW TO ATTEND BOTH DAYS OF THE MT. HOPE SHOWCASE!



Mt. Hope Event Center

GPS: 8076 SR 241, Millersburg, OH 44654

Thursday, September 20th - 9AM to 8PM

Friday, September 21st - 8AM to 5PM

MtHopeShowcase.com



With outstanding reviews from our spring showcase, we are pleased to welcome back **Dave Kauffman**, author of "Freedom to Succeed" and popular seminar speaker.

Dave will provide multiple free seminars throughout the showcase while offering a more in-depth, hands-on presentation on Thursday at 6PM. The \$97 cost to participate in this session will be one of the best investments you can make if you want to be successful in business!

PAID SEMINARS - \$97 (90 Minutes)

Thursday, September 20th 6:00PM to 7:30PM

Friday, September 21st 3:00PM to 4:30PM

The 90-minute seminar takes the free sessions to the next level and incorporates the **DISC Advantage** booklet, which leads you through:

- An adult personality profile assessment that is self-scored (not online)
- Information on your unique personality blend
- New graph information on all 41 different personality blends
- Information on understanding the different style blends
- The **Funbook information** - featuring The Model of Human Behavior
- Information from the "Guide to Effectively Reading People" charts
- And more!

The idea behind the "DISC Advantage" name is that you will find yourself at a DIS-Advantage in business and in your personal life if you do not utilize The Model of Human Behavior to better understand people. Get a "DISC-Advantage"... in business and in your personal life!

FREE SEMINARS (45 Minutes)

Thursday, September 20th

11:00AM to 11:45AM

1:00PM to 1:45PM

2:30PM to 3:15PM

4:00PM to 4:45PM

Friday, September 21st

9:00AM to 9:45AM

10:30AM to 11:15PM

1:00PM to 1:45PM

2:00PM to 2:45PM

During one of the FREE 45 minute seminars you will **DISCover**:

- An introduction to DISC Model of Human Behavior
- How to adjust your leadership style
- Your personality style
- Your communication style
- Your priorities & decision-making style.

Seating is limited. Don't be late!

Prepayment to reserve your seat for either paid seminar can be made by calling 813.580.8920 or online at EmpoweringSmallBiz.com/Events. Otherwise, please pay at seminar.

Multiple Wellness Vendors!

A&M Gutter Guard
AG Trucut
AW Machinery LLC
Air Works Ltd
Alonovus
Bad Dog Tools
BDH Belts
BH Enterprises
Bright Star Auctions
Bottom Line Mentoring
Busy Beaver Publications
Charm Engine
Classical Construction
Coach Thom
Complete Wellness
CutCo
Delagrance Construction
Derstein Trailer Sales
DES-ECK Welding
Door Tech

Fall 2018 Mt. Hope Showcase Vendors (partial list)

Double R Sharpening
DSI (Distribution Service Inc)
DW Bands
Ed's Outdoor Shop
Eli Weaver
F&A Sewing
Farmer's Equipment Supply
Finishworks
First Federal Bank
Choice Mattresses
Gilead Balm Wellness
Halverson
Hearinc
Heartland Promotional Products
Hermance Machinery
Hentzen Coatings
Holmes Fire & Safety
Holmes Power Equipment
Hoover Pump Works
Honeyville Metal

Industrial Service Supply
Inkscape Print & Promos
Interpack Systems
Lifetime Cookware USA
Lumbermaster Bandmill
Michiana Equipment
Midwest Sharpening
Miller Maytag Sales
Miller Sales
Natures Warehouse
Pioneer Equipment
Pioneer Surveying
Plain Communities
Plastic Innovations
Precision Power
Quality Sips
Rayco Manufacturing
Reiff Metal Fabrication
SE Drive Shafts
Southeastern Equipment

Sparta Steel
Spray Foam Solutions
Stauffer and Sons Inc.
Stop Fyre
Sun Lite Enterprises
The Budget
TNT Welding
Total Life Changes
Troyer Machine
Troyer Signs
Troyer Wholesale
Valco Equipment LTD
Vidmar Sales
Vista Life
Weaver's Magento
Williams Toyota
Yoder Hydraulics
Yoder Service and Supply
Young Living Essentials

Thursday, September 20th - 9AM to 8PM

Friday, September 21st - 8AM to 5PM