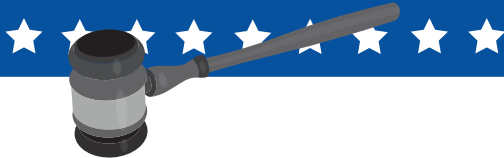


**THURSDAY,
DECEMBER 12, 2019
at 10:00 AM**

AIR WORKS

CONSIGNMENT AUCTION LTD.



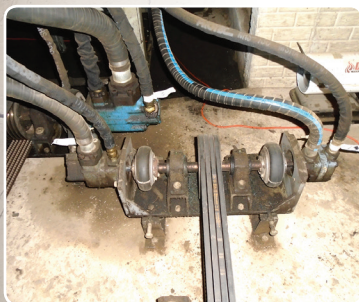
**250
WOODWORKING**
7087 S Kohler Rd.
Apple Creek OH 44606

COMPLETE WOODSHOP LIQUIDATION (Absolute)

Located on Kohler Rd. south of US 250, midway between Apple Creek and Mt Eaton. Signs will be posted.

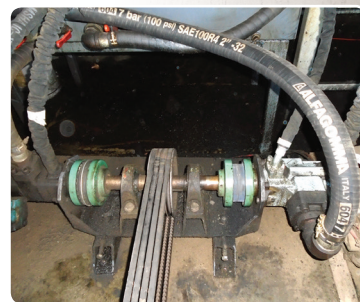
Hydraulic Package A

- Double Pump Mounts
- Fixed Vicker Vane Pumps
- 3525V, 33 GPM/20 GPM
- 3520V, 32 GPM/11 GPM
- V2010, 10 GPM/5 GPM
- V20, 10 GPM
- Foot Print 72"x 40"x 40"
- 500 gallon reservoir w/stand
- Ball valve, return filter, relief valve

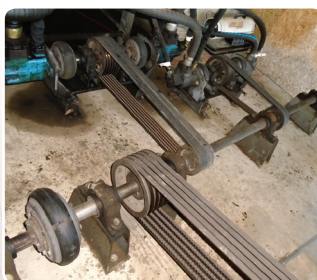


Hydraulic Package B

- Double Pump Mounts
- Vicker Vane Pumps
- V2020, 10GPM/10GPM
- Dennison Vane 20 GPM/10 GPM
- V2520, 12 GPM/12GPM
- V2520, 12 GPM/12 GPM
- Foot Print 54"x 45"x 28"
- 300 gallon reservoir w/stand
- Ball valve, return filter, relief valve



**Complete Above Hydraulic Package A And B Are Driven By:
Emerson Model H60P2E Electric Motor, New In 2015
Includes, Saylor Beall 15 Hp Compressor, SN 45D-6-D90;
Leece Neville 12V 108Amp Battery Charger; Safety**



AIR WORKS CONSIGNMENT AUCTION LTD.
PO Box 242 • Kidron OH 44636
330.749.4362
AirWorksAuction.com

MARTY TROYER
Office Manager
330.749.4362

REUBEN TROYER
Auction Manager
330.749.5086

Your Air Works Auction Team

ELI TROYER
Auctioneer/Manager
330.317.9259

DAN TROYER
Auctioneer/Manager
330.749.9478

MARTY TROYER
Auction Manager
330.749.7331

MACHINERY & TOOLS



Altendorf F45
Sliding Table Saw



Delta 10" Unisaw,
Hyd. Powered



Taylor 25 Section
Clamp Carrier



Glue Conveyor 15"W
x 11' L, Air Powered



Boere Heavy Duty
Wide Belt Sander



Buss 30" Shear Spiral
Cutterhead Planer



Diehl 55 Straight
Line Ripsaw



Delta 8" DJ20 Jointer,
Hyd. Powered



Whirlwind 212L 18"
Upcut Saw



2 Delta 43-370
Shapers



2 Delta 43-375
Shapers



3 Delta 3 Roll
Power Feeds



1 Delta 3 Roll Power
Feed, Air Pwr.



Porta Cable Omni
Dovetail Jig



Coping Shaper w/
Coping Sled



Hinge Notching
Machine



Door/Frame Clamp 5'X8'
w/6 Clamping Cylinders



Silver Doweller,
2 Spindle, Air Powered

Shop Tools; Altendorf F45 Sliding Table Saw, Hyd. w/Up Down & Tilt Blade On 110V, Extra Miter Fence, Original Electric Motors Sell Separately; Delta 10" Unisaw, Hyd. Powered; Taylor 25 Section Clamp Carrier, 32" Clamps, 6 Clamps Per Section, 5 Additional Sections Available, 7.5' Wide, Air Tightener, Air Flattener, Air Gate; Glue Conveyor 15" Wide 11 Foot Long, Air Powered; Boere Heavy Duty 36" Double Head Wide Belt Sander, 1st Head Rubber Drum, 2Nd Head Platinum, Shoe Hold Downs, Air Tracking, Air Up/Down Table, Hyd. Power & Feed, Model Tks900 SN84013011; Buss 30" Shear Spiral Cutterhead Planer, 8" Max Opening, Hyd. Power & Feed, Air Manual Table Up/Down,

Model 66 SN6526; Diehl 55 Straight Line Ripsaw, Hyd. Powered, SN10218, Glue Line Accuracy; Delta 8" DJ20 Jointer, Hyd; Whirlwind 212L 18" Upcut Saw, Hyd. Powered w/Air Stroke, 8' Infeed & Outfeed Tables, Including Fence w/Stops; 2 Delta 43-370 Shapers, 1" Spindle Using 1 1/4" Cutters w/Spacers, Hyd. Powered; 2 Delta 43-375 Shapers, 3/4" Spindle, Hyd. Powered; 3 Delta 3 Roll Power Feeds, 220V, 1 Ph.; 1 Delta 3 Roll Power Feed, Air Powered; Shaper Cutters and Accessories; Coping Shaper w/Coping Sled, 3/4" Spindle, 220V, 1 Ph.; Hinge Notching Machine, 110V, Foot Pedal Operated; Door/Frame Clamp 5' X 8' w/6 Clamping Cylinders; Silver Doweller, 2 Spindle, Air Powered; 2 MC300ST

Omga Chopsaws w/Stand & Fence, 220V, 1 Ph.; Wall Mount Air Powered Sanding Drum; 2 MVM Pocket Hole Machines, Air Powered; Weaver 11 Spindle Line Boring Machine, 115V w/Sliding Table; Edge Sander, 6" X 129", 220V, w/Extra Belts; Sand Pro 31" X 48" Downdraft Table, 110V; Sand Pro 36" X 72" Downdraft Table, 110V; 2 Porter Cable 5116 Omnijigs, Air Operated; Custom Made Drawer Front Knob Drill, Air; Mike Jecky Cutoff Saw w/Table & Fences, Air Powered; Delta Bench Top Drill Press, 110V; Delta 14" Bandsaw, 110V; Powermatic 719 Chisel Mortiser, 110V; 100 Pony Clamps; Sanding Booth, 6' X 8' High; 36" Inspection Lights, 110V; 3 Shop Fans; Shopmate 6" Bench Grinder.



2 MC300ST Omga Chopsaws
w/Stand & Fence



Wall Mount Air Powered
Sanding Drum



2 MVM Pocket Hole
Machines



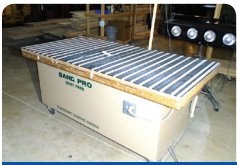
Weaver 11 Spindle
Line Boring Machine



Edge Sander,
6" X 129"



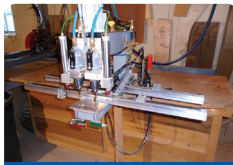
Sand Pro 31" X 48"
Downdraft Table



Sand Pro 36" X 72"
Downdraft Table



2 Porter Cable 5116
Omnijigs



Custom Made Drawer
Front Knob Drill



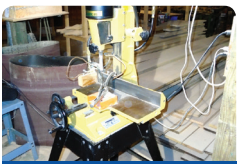
Mike Jecky Cutoff Saw
w/Table & Fences



Delta Bench Top
Drill Press



Delta 14"
Bandsaw



Powermatic 719
Chisel Mortiser



Omga
Chop Saw



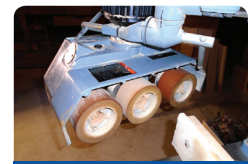
Sanding Booth,
6'W X 8'H



36" Inspection
Lights, 110V



3 Shop
Fans



Shopmate 6"
Bench Grinder

DUST COLLECTING SYSTEM & FINISH ROOM

Dust Collection

Dust Collector System and Baghouse with Shaker, 14" Inlet, Sawdust Bin, 5,000 CFM with Return Air, Hyd. Powered.



Miscellaneous

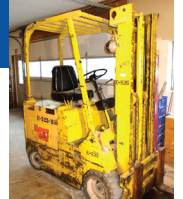


Outdoor Boiler Furnace



Forklift

Allis Chalmers ACE50LCR
SND AE103182 Battery Forklift,
36V, 3300 Lb. Lift w/54" Forks



Finish Room

Spray Booth, 8Ft X 16Ft with Lights with 36" Hyd. Powered Fan; Powermatic Air Make Up Unit, Natural Gas, with Hyd. Powered Fan; Kremlin 17A N Series 74398 Pump with Kremlin MVX Spray Gun; Stain Pump with Binks Spray Gun.



Spray Booth 8' X 16' w/Lights with 36" Hyd. Powered Fan



Kremlin 17A N Series Pump
w/Kremlin MVX Spray Gun



Powermatic Air Make Up Unit, Natural Gas,
with Hyd. Powered Fan



Drying Rack



Drying Rack



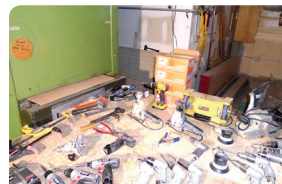
Shelf

Misc. Smalls, Air Tank

Racking, Shelving & Finish Racks on Casters; Lots of Sanders, Drills, Routers, Router Bits, Nailers in DeWalt, Dynabrade, 3M, Ekasand, Sioux, Bosch, Senco, Porter Cable and More; Furniture Dollies and Lumber Carts; (2) Air Misters; (2) 500 Gallon Air Tanks; Lots of Misc. Lumber.



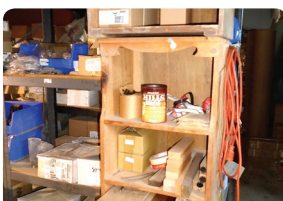
Lots Of Sanders, Drills, Routers, Router Bits, Nailers In Dewalt,
Dynabrade, 3M, Ekasand, Sioux, Bosch, Senco, Porter Cable & More



2 - 500 Gallon Air Tanks



Racking, Shelving And Finish Racks On Casters



Furniture Dollies And
Lumber Carts

AUCTIONEER NOTE: This is a complete liquidation of 250 woodworking shop and will include a nice lineup of air, hydraulic & electric powered tools and equipment. Finish shop was not in production in the last year.

AUCTION TERMS: Cash, Check, Credit Card w/valid ID. There will be a 10% buyer's premium on-site with an additional 3% for all credit card purchases. All items are sold "as is," where is with no warranty expressed or implied.

Mark Your
Calendars

10:00 AM

THURSDAY, DEC. 12, 2019

COMPLETE WOODSHOP LIQUIDATION (Absolute)

Plus Lots of Good Quality Consignments

250 WOODWORKING

7087 S Kohler Rd. Apple Creek OH 44606

*Located on Kohler Rd. south of US 250, midway between
Apple Creek and Mt Eaton. Signs will be posted.*

**WOODWORKING SHOP LIQUIDATION, INCLUDING
MACHINERY & TOOLS, FINISH SHOP, DUST COLLECTION
SYSTEM, COMPLETE HYDRAULIC SETUP, & MORE**

Sliding Table Saw * Unisaw * Clamp Carrier * Planer * Shapers
Wide Belt Sander * Edge Sander * Chop Saws * Cutoff Saw
Mortisers * Edge Banders * Downdraft Tables * Line Boring Machine
Sanding Booth * Spray Booth & Spray Equipment * 500 Gal. Air Tanks
Dust Collectors & Air Make-Up Equipment * Racking & Shelving
Shop Tools, Miscellaneous & Much More



CONSIGNMENTS WANTED for the 31st Annual Air Works Consignment Auction!

Thursday, Feb. 13, 2020

at 9:00 AM

4+ Auction Crews

Friday, Feb. 14, 2020

at 8:30 AM

15+ Auction Crews

Saturday, Feb. 15, 2020

at 8:30 AM

12+ Auction Crews

***Logging, Sawmill & Pallet Equipment * Heavy Equipment * Woodworking Equipment
Diesels/Power Units * Lifts & Rolling Stock * Antique Tools & Collectibles * & Much More!***

Mt. Hope
SHOWCASE

**Don't Miss the 2020 Mt. Hope Showcase
held alongside the auction!**

***Mt. Hope Auction Grounds &
Showcase Location (GPS):
8076 SR 241, Millersburg, OH 44654***

AirWorksAuction.com

