

# AIR WORKS

## AIR WORKS AUCTION



**Air Works Consignment Auction, Ltd.**

PO Box 242 - Kidron OH 44636

330.845.8485 (Ph) | 330.816.0006 (Fax)

[sales@airworksauktion.com](mailto:sales@airworksauktion.com) | [AirWorksAuction.com](http://AirWorksAuction.com)

Reuben Troyer, Auction Manager 330.749.5086

**FRIDAY APRIL 14, 2023 | 9:30 AM | 4299 S. APPLE CREEK RD. APPLE CREEK, OH 44606**

### Auction Terms and Information

Cash, Check or Credit Card w/valid ID. There will be a 10% buyer's premium on-site and a 15% buyer's premium for Online bidding with an additional 3% for all credit card purchases.

### Check Out & Loading

Buyers will need to have a paid receipt before loading. Auction staff assistance for loading is available on sale day to 6:00 PM, on Sat. April 15<sup>th</sup> from 8:00 AM to 12 noon, and the following week Mon. through Wed. from 8:00 AM to 4:00 PM. Otherwise it will need to be by appointment. Loading with 4,000 lb. forklift available at no charge.

### Consignment Unloading Schedule

Wed. & Thur. April 12<sup>th</sup> and 13<sup>th</sup> from 8:00 A.M. to 4:00 P.M.

## Max Bid Program - On-Site & Online -

1. Call the auction office 330-845-8485 and sign up as an absentee bidder for this auction.
2. Leave your Max bids (highest price you want to bid) on each item with Marty Troyer (phone or mail) and he will be your auction-day bidding agent.
3. Marty will bid on your behalf on auction day. Note: The auctioneer will not know what your max bids are, just to confirm that you can have confidence and absolutely trust your bidding agent.
4. If you are the winning bidder on any item you will be notified the following day by your bidding agent Marty Troyer.
5. You will be prompted to pay your invoice prior to or when you pick up your items.

*Thinking of Selling...?*

**INDUSTRIAL EQUIPMENT AUCTIONEERS**

## AIR WORKS

### AIR WORKS AUCTION



**Heavy Equipment  
Sawmill & Pallet Equipment  
Woodworking - Metalworking  
Industrial Equipment  
Manufacturing Equipment  
Rolling Stock**



**(330) 845-8485  
[www.airworksauktion.com](http://www.airworksauktion.com)**

**Specializing In  
Liquidations**

**330.845.8485 - [AirWorksAuction.com](http://AirWorksAuction.com) - [sales@airworksauktion.com](mailto:sales@airworksauktion.com)**

# Selling the contents of an 86,000 Square Foot Building; Assets of Former Ceramics Manufacturer AC PRODUCTS of Apple Creek, Ohio after 50+ Years in Business

## LIQUIDATION AUCTION - Live On-Site & Online Bidding



**1** Model # S-54400, Josef Kihlberg box stapler air powered serial # 9206



**2** Model # B-PN, Josef Kihlberg box stapler air powered Serial # 9609



**3** Pressure washer electric 3 phase 230/460 volt



**4** Model # 612R, Baldor Bench grinder Buffer electric 115 volt Serial # F1076



**5** Box Lot Misc. electrical switches, cords, outlets



**6** Box Lot Pipe hangers, threaded rod



**7** Box Lot 4 Boxes of Aero motive balancers



**8** Box Lot Air plow guns, utility knives



**9** Box Lot, 2 boxes Josef Kohlberg Carton staplers



**10** Box lot Ingersoll Rand Die grinders



**11** Box lot Ingersoll Rand Die grinders



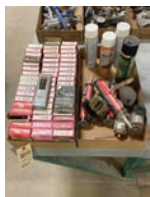
**12** Box lot Paper Cutter, Electrical parts



**13** Work Bench 187" x 40"



**14** Work Bench 4' x 17"



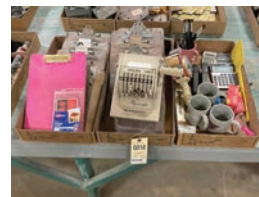
**15** Box Lot, Lumber Crayons, Furniture polish, Construction glue



**16** Box lot, Tape, tape dispensers, knives, putty knives



**17** Box lot, Die grinders, vents, gloves, clamps



**18** Box lot, Clipboards, calculators, paymaster check writer



**19** Box Lot, PVC Pipe fittings



**20** Box lot, Air filters, regulators, valves



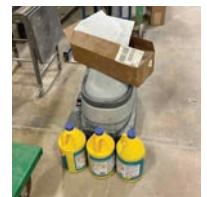
**21** Box lot, Electrical switch covers



**22** Box lot, Electrical boxes, covers



**23** Box lot, Electrical switches, timers



**24** Model # 9087381020, Advance floor Scrubber and 3 gallons floor cleaner



**25** Diagraph Bradley Stencil machine



**26** Multiton Pallet jack 5000lb capacity



**27** T & S 500 pound platform lift, Model# LLPH-500-FW, w/ Enerpac Hyd. Pump



**28** Box lot, Misc. Electrical cords, switch boxes



**29** Box lot, Electric Hand Grinder, jig saw, drill





**30** Box lot Air tools, impacts, angle drill, wet polisher



**31** Box lot, grip fast riveter, brown and sharp precision tool



**32** Model# 6175, Milwaukee 14" cut off saw 120volt



**33** 3/4" Socket set standard



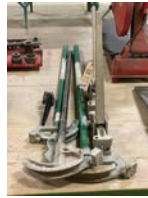
**34** Milwaukee rotary hammer drill electric 600 RPM



**35** Rigid Pipe threader 1/2" thru 2"



**36** Milwaukee Saw 2 all, angle grinder heavy duty



**37** Greenlee Pipe benders, 2 Greenlee tools



**38** Box lot, Ball joint service tool set, mallets, screwdrivers



**39** Box lot, Imperial socket set 1/2" drive, misc. sockets



**40** Box lot, Handi square, open end wrenches, allen wrenches



**41** Box lot, Electrical switch boxes, switches



**42** Work Bench 4' x 17'



**43** Work Bench 4' x 17'



**44** Boots, carpets, work aprons



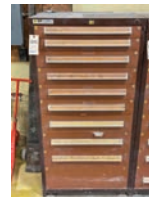
**45** Electrical conduit, wire



**46** Box Lot, Tie downs, cords, glue gun



**47** Air hose, new and used



**48-63** Stanley Vidmar 10 drawer Tool Cabinet and contents 30" wide x 60" tall (16 cabinets total)



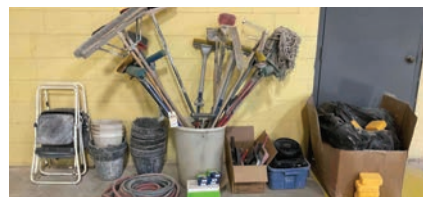
**64-70** Stanley 2 Door Storage Cabinet 60" wide x 33" High +contents (7 cabinets total)



**71-72** Stanley 2 Door Storage Cabinet 30" wide x 33" High contents



**73** Rubber Mats



**74** Brooms, rubber buckets, step stools, mops, water hose



**75** Pallet racking- 2 section 16 high x 38" deep x 120" long (sells by section x2)



**76** Dump trash hopper self dumping



**77** American gas fired car bottom shuttle kiln, 108"x160", (6) 104x52" cars, fiber lined, (6) bottom & (4) top NA Tempest burners, NA 15 hp. 1400 cfm combustion blower, SS0, power doors, in-floor rails, chain type car mover, Yokogawa 3-zone temperature control



**77A** Tempest high velocity burner new



**78** Pallet lot Ceramic 5" plate spacers up to 2800 degrees



**79-84** 70 pcs 24 x 24 Ceramic plates up to 2800 degrees (each lot sells by the piece x 70) 6 lots



**76A** Dump trash hopper self dumping



**85** 4 pallets Ceramic Tile drying stands



**86** 4 pallets Ceramic plates various sizes





**87** Denver II gas-fired car bottom shuttle kiln, model L67518, s/n 142, (1970), 2300 deg F max temp, 118"x315", (8)77x86" cars, above floor rail & chain car mover, West 2072 temperature control



**88** 100 pcs 18 x 24 ceramic drying plates up to 2300 degrees (sells by the piece x 100)



**89** 97 pcs 18 x 24 Ceramic Drying plates up to 2300 degrees (sells by the piece x 97)



**90** 100 pcs 18 x 24 Ceramic drying plates up to 2300 degrees (sells by the piece x 100)



**91** 42 pcs 18 x 24 Ceramic Drying Plates (sells by the piece x 42)



**92** Pallet lot Ceramic Drying Plates 5" spacers up to 2300 degrees



**93** 75 pcs 24 x 24 Ceramic drying plates (sells by the piece x 75)



**94** 75 pcs 24 x 24 Ceramic drying plates (sells by the piece x 75)



**95** 600 pcs Ceramic Drying plate spacers 5" (sell by the piece x 600)



**96** 400 pcs Ceramic Drying plate spacers 10" 2 pallets (sells by the piece x 400)



**97-101** 40" x 57" Cart (5 lots)



**102** Ohio gas fired car bottom shuttle kiln, 80"x164", (2) 53x176" cars, above floor rail & chain car mover, (6) bottom & chain car mover, (3) top NA4422 burners, SSO, pneumatically powered doors. Note: If outside valving is removed furnace can be moved through the doors. Seller not responsible for moving



**103** 2-Pallets Insulating Fire brick Approx 12 pcs



**104** 3 Pallets 24 x24 Ceramic drying plates and 5" spacers



**105** Denver I gas-fired car bottom shuttle kiln, model M-464, s/n 135,2500 deg F max temp, 94"x171", (4) 53x86" cars, above floor rail; chain car mover, power doors, Yokogawa 4-zone temperature control Note: If outside valving is removed furnace can be moved through the doors. Seller not responsible for moving



**106** 70 pcs 24 x 24 Ceramic drying plates (sells by the piece x 70)



**106A** Pallet Vented 18 1/2 x 18 1/2 Ceramic Drying plates



**107** Aluminum plank 8 ft x 20 in  
**107A** Aluminum Planks 12 ft x 20 in Qty 3 (sell by the piece x 3)



**108** Aluminum planks 12 ft x 20 inches qty 3 (sell by the piece X 3)



**109** Aluminum planks 12 ft x 20 in. qty 3 (sell by the piece X 3)



**110** 3 Step Rolling Stands



**111** 3 Step Rolling Stands



**112** 3 Step Rolling Stands



**113** 3 Step Rolling Stands



**114** 3 Step Rolling Stands



**115** Shop Vacs, 1-Milwaukee, 1-shop Vac



**116** Metal Cabinet 36" x 85" high



**117** Evenheat SP71-43 9120 watt electric hobby kiln ,s/n 58.545



**118** Pallet Lot self supporting Pyrometric Cones



**119** Model # TPC 4213, Heat Buster 43" Fan 115 volt





**120** Model# TPC 4213, Heat Buster 43" Fan 115 Volt



**121** Fans- Fan parts



**122** Ceiling Fans 120 Volt Does Not include Cart



**123** 2 Topi Industrial-2 Air master Fans 115 Volt



**124** (3) 20" Floor Fans 115 Volt



**125** (2) 20" and (1) 24" Dayton floor fan 115 volt



**126** (3) 24" Dayton floor fans 115 volt



**127** (3) 24" Dayton Floor Fans 115 volt



**128** (2) 30" and (2) 24" Floor Fan 115 volt



**129** (2) 30" and (2) 24" Floor fans 115 volt



**130** Schaefer Air circulating Fans 115 volt



**131** (6) 16" Hartzell Propeller fans 115 volt



**132** (6) 16" Hartzell Propeller fans 115 volt



**133** (6) 16" Hartzell Propeller fans 115 volt



**134** (6) 16" Hartzell Propeller fans 115 volt



**135** 16" Hartzell propeller fans parts



**136** (2) 24" Floor fans Balder 220 volt



**137** Midwestern MR48S6 48" single deck vibrating screens, s/n 0386-4011



**138** Midwestern MR48S6 48" single deck vibrating screens, s/n 0996-4075



**139** Sweco LS48S888 48" double deck vibrating screen, s/n LS48273-29



**140-143** 30" x 6' high x 6 tall Drying carts



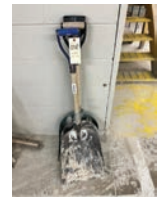
**144** (6) Dump Carts



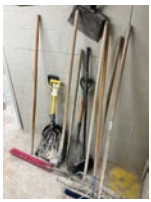
**145** Push brooms and shovels



**146** Scrapers, spud bar



**147** Shovels



**148** Brushes, shovels, rake



**149-153** 120 Gallon tank on Caster base (5 lots)



**154-158** Mobil Garbage Cans with lids (12 per lot) 5 lots



**159** Self dumping Fork lift hopper



**160** Self dumping Fork lift hopper



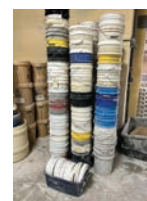
**161** Model # 482005, Advance sweeper Retriever 5800 12 volt 490888



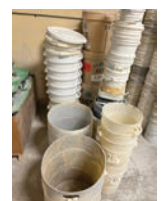
**162-169** 12-15 Gallon Containers with lids and dollies (12 per lot) 8 lots



**170** 32 Gallon Containers



**171** 5 Gallon Buckets



**172** Barrels and buckets





173 Pallet lot Dolly Carts



174 Pallet lot Dolly Carts



175 Double tub steel sink



176 DeWalt 12" Miter saw



177 Misc. PVC pipe and fitting various sizes



178 Misc. Hose, hot water heater, barrel vacuum



179 Brushes, mops, broom



180 Toledo Model # 2071 Scale 75 pound limit



181 Toledo Model # 2071 Scale 75 pound limit



182 50 Gallon Plastic Barrels with lids



183 Misc. Plastic Barrels with dollies



184 2- Barrels stands and barrel dollies



185 Wash tub, sink



186 3-boxes pump parts



187 3-boxes pump fittings



188 M8, Wilden Pump Air powered pump



189 M4, Wilden pump



190 TA2, Sand piper Tranquilizer



191 Warren Rupp air powered pump



192 Warren Rupp air powered pump



193 Aro, Ingersoll rand air powered pump



194 Warren Rupp air powered pump



195 EB1 1/2 A, Warren Rupp sand piper air powered pump 263941



196 SA2-A, Warren Rupp and piper air powered pump, 513128



197 SA2-A, Warren Rupp and piper air powered pump, 152553



198 SA2-A, Warren Rupp sand piper air powered pump, 72868



199 Pump Parts



200 3 Boxes Aluminum rod 33lbs per box welding rod



201 4 boxes 1/16" mild and low Alloy Steel welding wire



202 Uni-7018, Uni-weld 3/16" Welding rods 4 boxes



203 Inweld 1/8" mild and low Alloy Steel welding wire 10lbs



204 Inweld 1/8" mild and low Alloy Steel welding wire 50lbs



205 Box lot Blower, pipe fittings



206-211 2-Hand Carts



212 Werner 16' Folding Aluminum Ladder





**213** Target Masonry saw 115/208 volt



**214** Work Bench 40" x 15'



**215** Work Bench 40" x 15'



**217** WI hydraulic 15 cu. ft. filter press, model 800G32-29-15DYLs, s/n F05456,(1995),(30)31.5x31.5" plates, steel platform, diaphragm pump, (2) rolling steel sludge tanks



**218** Lema hydraulic powder press, s/n 91/PS259, 14x20" T-slot ram, relay control, shuttle feed, gravity hopper, custom built rubber band conveyor; Lancaster 4" counter current muller mixer, type EBG4, s/n 4100, (1941), 10 hp. ON custom FABRICATED STEEL base



**219** Dustkop 40-bag dust collector with cyclone, model FT-40-SP, s/n 5301



**216** Work Bench 40" x 15'



**220** 1000 Gallon Poly tank



**221** Lema Presses for dies



**222** Portable Funnel



**223** 2-Pallets Electric motors



**224** Gusher Pumps Model 11019AVD-B-6, 230/460 volt, 1281-757



**225** 2-Mettler Toledo, LJ 16 Moisture analyzer



**226** 12' Step Ladder



**227** Werner 8' step ladder



**228** Werner 6' Step ladder



**229** Victor Acetylene welding set



**230** Electric Pump Cart



**231** Sumitomo High speed Gear-box 10hp 3-phase, 230/460 volt



**232** Sumitomo High speed Gear-box 10hp 3-phase, 230/460 volt



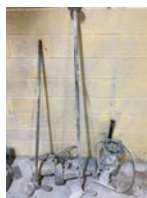
**233** Sumitomo High speed Gear-box 10hp 3-phase, 230/460 volt



**234** Powerweld crimp master on stand, electric motor



**235** Link belt worm gear speed reducer electric motor high speed gear



**236** Mixer parts



**237** Breaker boxes, switch boxes



**238** 220 volt Transformer box



**239** Cart 3-five gallon buckets of oil



**240** Cincinnati Royal 16" Drill Press



**241** Dayton 15" Metal cutting Band saw and bands



**242** 2-Metal work benches

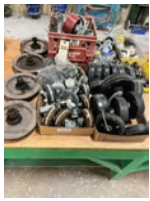


**243** Box lot, Pulleys, bearings, interlocking connectors



**244** Box lot Pulleys, sprockets





**245** Box lot casters, wheels



**246** Box lot Bolts, lags, cable, roller chain



**247** Box lot Metal parts



**248** Metal Crate, self dumping hopper



**249** Wheel barrows



**250** Wheel barrows



**251** Wheel barrows



**252** Pallet Racking 36" deep x 7' tall x 10 wide



**253** 1985 Fruehauf 48' tandem axle aluminum dry van storage trailer, VIN: 1H2V04883GE001604 No title available



**254** 1984 Fruehauf 48' tandem axle aluminum dry van storage trailer, VIN: 1H2V04821EH065989 No title available



**255** 1975 Lufkin 45' tandem axle aluminum dry van storage trailer, s/n 45793 No title available



**256** 2017 United 20ft enclosed construction trailer, vin 563TE-2125JA160265, front ladder, top rack, tandem axle, ball hitch



**257** UNICARRIERS 4,500# CAP. LIKE NEW MAST AND HYDRAULICS IN EXCELLENT COND



**258** Hypertherm Powermax 600 Plasma Torch



**259** Miller Bobcat 225G portable welder/8,000 watt generator, s/nKG251837, Onan 16 hp. LP gas eng.,cart



**260** ESAB Migmaster 250 welder, s/n MA-1621120



**260A** Set of 5 lockers as pictured



**260B** Set of 5 lockers as pictured



**260C** Set of 10 lockers as pictured



**260D** Set of 7 lockers as pictured



**260E** Set of 3 lockers as pictured



**260F** Set of 4 lockers as pictured



**260G** Set of 3 lockers as pictured



**260H** Fireproof 4 drawer filing cabinet with key



**262** 2-Shelf 24x42x72" high



**261** Kennedy Tool Chest



**263** Post Hole digger, clamps, support stands, creeper



**264** Belts, breakers



**265** Conduit Electric misc.



**266** Box lot Pile of wires



**267** Box lot Electrical pile



**268** Box lot Fuses, filters, block plastic pipe fittings



**269** Box lot Hose clamps, wire, brushes



**270** Box lot water meters



**271** Leeson Adjustable speed controller





**272** Box lot Levels, come alongs, tire chains



**273** Box lot Threader



**274** Box lot Drill bits, chisel, allen wrenches



**275** Box lot Parts bin loaded 24 drawer bolts, washers, nuts



**276** 7-Drawer organizer, snap rings, washers



**277** 3-Organizers loaded, nuts, washers, bolts



**278** 2-Ramset tools, fasteners



**279** Oilers, grease guns, pliers, vise, bottle jacks



**280** Clamps, C-clamps, vise grip clamps



**281** Tarps



**282** 2-Dayton wire Hoists 500lb cap.



**283** Milwaukee saw DeWalt impact Digital tachometer



**284** Work Bench 4' x 15'



**285** Work Bench 40" x 15'



**286** Work Bench 40" x 15'



**287-301** Material Cart 3' x 6' x 6' (6 per lot, sell by the piece) 15 lots



**302** (7) Material Cart 3' x 6' x 6'; Includes shelf boards (sells by the piece x 7) Boards are 1/2" x 7"W x 60"L mostly pine



**303** (7) Material Cart 3' x 6' x 6'; Includes shelf boards (sells by the piece x 7) Boards are 1/2" x 7"W x 60"L mostly pine



**304** Patterson 30" dia.x 42" steel drum ball mill, electric drive



**305** Patterson 24" dia.x 36" steel drum ball mill, electric drive



**306** Abbe 36" dia. x 48" steel drum ball mill, model 5APM, SN A38788 Dorris Gear Reducer, motor drive



**307** Abbe 36" dia. x 48" steel drum ball mill, 5 hp. electric drive, 230 volt



**308** Ceramic Instruments S4/1000 4-jar-mill, s/n 3-778 230V



**309** Cart mixer tub



**310** Adjustable shelf 30" x 64" wide x 71" high



**311** Patterson Glaze mixer system



**312** Midwestern MR24S4 24" single deck vibrating screens, s/n 0592-2024

**NO  
IMAGE**

**312A** Steel Drum Ball mill 14" x 21" Drum



**313** Brookfield Glaze pump



**314** Brookfield RVF Viscometers, on metal stand



**315** Lightning Mixer on pole



**316** 4 Pallets mixer stone



**317** 5- Ohaus scales Metal cabinet



**318** Double Tub Stainless sink



**319** Ohio kilns double deck jar Mill with 4- 8" x 8" Porcelain Jars





**320** Hamilton Beach Mixers, scales, table



**321** Barrels, Jugs, Jars, Pitchers



**322** 5 Pallets Stain for Ceramics



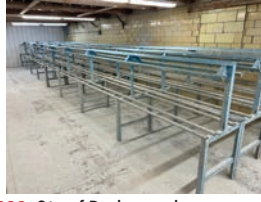
**323** 3 Pallets Zinc oxide, Pulverized kaolin, Alumina, Hydrate



**324** 3-Skids Glaze



**325** 3-Skids Glaze



**326** Qty of Drying racks



**327** Cart- 3 Heaters



**328** 225 pcs on 4 pallets BA780 molds (sells by the piece x 225)



**329** 350 pcs on 4 pallets BA725 Molds (sells by the piece x 350)



**330** 1 pallet SC805 molds



**331** 1 pallet BR793 molds



**332** 1 pallet BR791 molds



**333** 1 pallet BA729 molds



**334** 125 pcs BF764 1-pallet misc. molds (sells by the piece x 125)



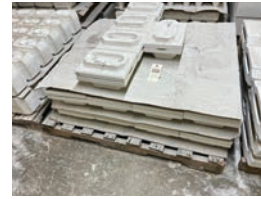
**335** 520 pcs on 3 pallets BA730 molds (sells by the piece x 520)



**336** 120 pcs on 2 pallets BF780 1-pallet misc.



**337** 1 Pallet Misc. Molds



**338** 1 Pallet BR782 molds



**339** 60 pcs SF810 molds (sells by the piece x 60)



**340** 1 pallet BA765-BR795 molds



**341** 1 Pallet SC830-BA778 molds



**342** 1 pallet AR171-ARA151 molds



**343** 1 Pallet BF728-BF770 molds



**344** 1 Pallet BA777-SP400 molds



**345** 85 pcs BA764 molds (sells by the piece x 85)



**346** 75 pcs BA777 Molds (sells by the piece x 75)



**347** 60 pcs BA726 Molds (sells by the piece x 60)



**348** 16 pcs BF781 - misc. molds (sells by the pieces x 16)



**349** 100 pcs BC725 molds (sells by the piece x 100)



**350** 7' - 9 Step portable steps



**351** 2003 Studio 62'x33' gas fired tunnel dryer, 39'x57' opening, 3kw circulation fans, 5-zone temperature  
**Note: Sell 352 & 353 with Dryer (12) 36" x 70" x 50" that fit dryer**





**354-361** 8 lots Material Carts 36" wide x 70" long x 50" high (6 per lot) sells by lot x 6



**362** Custom built 4-nozzle spray glazing machine, rubber band conveyor, Gusher pump



**363** 30" x 128 Stainless work bench sink



**364** Glazing Mixer on Pole system



**365-372** 8 lots- Glazing Mixer on Pole system



**373** (2) 5' Diameter Turn tables



**374** (3)5' Diameter Turn tables



**375** (3) 5' Diameter Turn tables



**376** 2 Pallets Turn table tops



**377** Mobil Glaze Mixer system



**381** 1999 Custom built waterfall glazing machine, carousel conveyor, spray wash station, SS molds, air diaphragm pump, US Best 1.5 hp.mixer



**378** Portable Glaze screen shakers, 230/460



**379** Portable Glaze screen shakers, 230/460



**380** Midwestern screens



**382** Storage Cabinet



**383** Air Paint sprayers Pro-tek/ HVLP/ Devil Biss



**384** Pro-tek Spray tank with binks spray guns



**385** Central Ceramic Services spray glazing touch up unit, 36" dia. screen table, poly tub, De Vilbiss gun, Dayton 16" 1/2 hp. exhaust fan, curtain



**386** Central Ceramic Services spray glazing touch up unit, 36" dia. screen table, poly tub, De Vilbiss gun, Dayton 16" 1/2 hp. exhaust fan, curtain



**387** Malkin type 310 waterfall glazing machine's/n 9908/M1839/117/310, 4' dia. screen table, poly tub, Gusher 1 hp.pump



**388** Custom built spray Booth



**389-393** 24" x 34" Glaze cleaning belt with SRC speed control (5 lots)



**394-416** Pallet Lot Assorted ceramic bath products (21 lots)



**417** 3 pallets, 2-pallets tile/ 1 pallet coasters



**418** Pallet lot Electric motors



**419** Metal work Station



**420** Shelf 24 x 40 x 6' high



**421** 16 x 48 x 80" tall



**422** 24" Towel bar clear



**423** 24" Towel bar clear



**424** Mixed Towel bars 24" and 36" clear and white



**425** 24" Towel bar white



**426** 24" Towel bar white





427 Pallet lot Toilet paper rollers



428 Pallet lot Toilet paper rollers



429 3 Pallet lot Misc. Mounting plates



430 2-Section pallet racking 36" x 10 x 9' high per section



431 Pallet racking 32" x 8 x 10' high



432 Pallet racking 2 sections 36" x 10 x 12' high per section (sell by section x 2)



433 8-Section Pallet racking 36" x 10 x 16 high per section (sell by section x 8)



434 3-4' x 3' Metal grates



435 (5) Steel Shelf 31" x 5 x 67" high. (sells by the piece x 5)



436 (8) Material Carts 36 x 67 x 82" high (sells by the piece x 8)



437 (3) Material Carts 36 x 67 x 82" high (sells by the piece x 3)



438 Material Carts 36 x 65 x 75" \*OUT OF AUCTION\*



439 Material Carts 36 x 65 x 75" \*OUT OF AUCTION\*



440 Material Carts 36 x 65 x 75" \*OUT OF AUCTION\*



441 Scrapers Dream Misc. pipe, angle iron, carts



442 Cart with various length metal siding up to 12' -6" long



443 Metal storage cabinet 2' x 3' x 6' 6" high



444 Work Bench 40" x 15'



445 Pallet lot Bubble wrap, paper rolls



446 3-step roller stand



447 3-step roller stand



448 3-step roller stand



449 3-step roller stand



450 5-step roller stand



451 4-step roller stand



452 5-step roller stand



453 7 Storage containers



454 Josef Kihlberg carton stapler



455 Josef Kihlberg carton stapler



456 Josef Kihlberg carton stapler



457 4- Step roller stand



458 8-step roller stand



459 Wood storage bins, desk, floor mats



460 Metal work Station and work bench



461 2- Section Pallet racking 36" x 8' x 13' high per section (sell by section x 2)





**462** 3 section pallet racking 36 x 92 x 14 high per section (sell by section x 3)



**467** 2-Section Pallet racking 44" x 9 x 11' 8" high per section (sell by section x 2)



**472** 1-Section Pallet Racking 40" x 10 x 12' high per section



**477** 8 step roller stand



**482** 6-section pallet racking 42" x 8 x 13' 4" high per section (sell by section x 6)



**487** 4-Section Pallet racking 42" x 8 x 12' high per section (sell by section x 4)



**492** Wood shelf 27" x 9' 9" x 11'



**463** 6 Steel shelf 31" x 5' x 67" high per section (sell by shelf x 6)



**468** 2- section pallet racking 42" x 9 x 12 high per section (sell by section x 2)



**473** 3-Section Pallet Racking 42" x 7' 9" x 12' high per section (sell by section x 3)



**478** 8 step roller stand



**483** 2-section pallet racking 42" x 8' 12 high per section (sell by section x 2)



**488** 3-Section Pallet racking 42" x 10' x 12' high per section (sell by section x 3)



**493** 2- Section steel shelf 31" x 5 x 11' high per section (sell by shelf x 2)



**464** 2-Section Pallet racking 44" x 9 x 11' 8" high per section (sell by section x 2)



**469** 4-section pallet racking 48 x 6 x 10' 9" high per section (sell by section x 4)



**474** 2-Section Pallet Racking 44" x 9 x 11' 8" high per section (sell by section x 2)



**479** 8 step roller stand



**484** 5-section pallet racking 44" x 9' 5" x 15' per section (sell by section x 5)



**489** 6-section pallet racking 42" x 8' x 10' high per section (sell by section x 6)



**494** 3- Section Pallet racking 36" x 10 x 10' high per section (sell by section x 3)



**465** 3- Section Pallet Racking 48 x 6' x 10' 10" high per section (sell by section x 3)



**470** 3-Section Pallet Racking 42" x 10 x 12' high per section (sell by section x 3)



**475** 1-Section Pallet Racking 42 x 6 x 12' high per section



**480** 8 step roller stand



**485** 6-section pallet racking 42" x 9' 10" x 12' high per section (sell by section x 6)



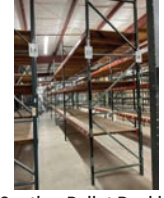
**490** 2-section pallet racking 42" x 8' x 12' high per section (sell by section x 2)



**495** 1 Pallet Material Cart Shelf boards 1/2" x 7" x 60" mostly pine



**466** 2-Section Pallet racking 48 x 9' x 11' 8" high per section (sell by section x 2)



**471** 3-Section Pallet Racking 42" x 10 x 12 high per section (sell by section x 3)



**476** 4 step roller stand



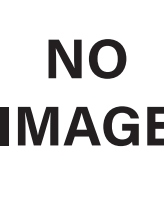
**481** 12 step roller stand



**486** 6-section pallet racking 42" x 9' 10" x 12 high per section (sell by section x 6)



**491** 1- section steel shelf 31" x 5 x 11' high per section



**496** 2 Pallet Material Cart shelf boards 1/2" x 7" x 60" mostly pine

**NO  
IMAGE**

**NO  
IMAGE**





**497** 3-section Pallet racking 36" x 8' x 14' high per section (sell by section x 3)



**498** Wood storage Cabinet



**499** 1-Section 36" x 9' x 13' high per section



**500** 2-Section 42" x 8 x 13' high per section (sell by section x 2)



**501** Stainless steel pitchers and buckets



**502** Stainless steel pitchers



**503** 10 Plastic Barrels 55 gallons



**504** (5) Metal Shelf 15" x 48" x 80" high (sells by the piece x 5)



**505** 2 Metal shelf



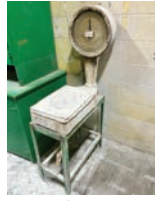
**506** Delta 14" Vertical Bandsaw, cat no. 28-203



**507** Bench top Drill press Electric 31-7042



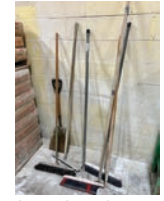
**508** Vise on steel stand



**509** Howe scale on stand



**510** All green storage cabinets and table



**511** Brushes, shovel



**512** 2 Work Benches 36" x 8' long



**513** Cart and scales



**514** Tool box and tools c-clamps, mallets, scoops



**515** Peanut packaging dispenser



**516** 2-Tables 5' x 11' long



**517** Interlake Power 100 1/4" power strapping machine



**518** Delta Unisaw 34-801 10" table saws/n 85N42346, 1.5 hp.



**519** My- Fanik Drain snake



**520** Qty of Steel Shelving



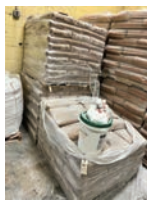
**521-531** 1 Pallet B Series Casing Approx 25 pcs (11 lots)



**532-539** Pallet Miscellaneous Casing Approx 20 pcs per lot (18 lots)



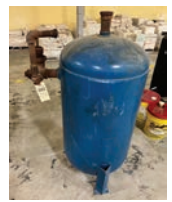
**540** 9- Pallets of Pottery Plaster



**541** 3- Pallets of Ground silica, sil-co-sil



**542** 1 Pallet Talc



**543** Blue Air Tank



**544** Ingersoll-Rand SSR-EP25 25 bp-rotary screw air compressor, s/n JX2311U00214, 32819 hours, 1998



**545** Ingersoll-Rand 10 hp rotary screw air compressor, model U10H-SP, s/n K4691U87E, 06841 hours, 1984



**546** Yellow Flammable Storage Cabinet



**547** 3 Air powered Pumps 1-2" sandpiper and 2 Aro pumps



**548** Wilden 2" Pump with 1 bad diagram pump is almost New



LIQUIDATION AUCTION

# Construction Equipment & Tools

**Tuesday April 4, 2023 • Kidron Auction Grounds • 9:00 AM**

## Live On-Site & Online Bidding

Selling the assets of WB Services. Complete dispersal including a fleet of vehicles, trailers, rolling stock, Potain crane, huge selection of construction tools and equipment including corded & cordless power tools, compressors, welders, shop vacs, ladders. **CALL FOR FULL CATALOG: 330.845.8485**

**HOTEL ACCOMMODATIONS 330.294.9977**



(Formerly)

## Meadows Of Dan Farm Service

**New Holland Dealership Liquidation**



**Wednesday May 24, 2023 MULTIPLE RING, LIVE ON-SITE & ONLINE**

**2934 Jeb Stuart Hwy. • Meadows Of Dan, VA 24120**

**Tractor Parts Sell Week of May 8<sup>th</sup>, 2023 | Multiple Online-Only/Max Bid Auctions**



After 60+ years in business, selling the assets of Meadows Of Dan Farm Service. Complete dispersal including a huge parts dept. including alternators, starters, fuel injector pumps, 3-pt hitch parts, mufflers, filters & seals, crankshafts, pistons, cylinders, radiators, paint, water pumps, air cleaners. Large assortment of bolts, fuses, hoses, fittings, belts.

Contents of service shop includes specialty tractor tools, lots of hand tools, hyd hose press, parts washer, torch set, metal lathe, hyd rams, drill press, & much more - **CALL FOR FULL CATALOG: 330.845.8485 • HOTEL ACCOMMODATIONS 276.779.4159 ( Comfort Inn-Hillsville)**

**330.845.8485 • AirWorksAuction.com • sales@airworksauktion.com**



# Mark Your Calendars

APRIL 14, 2023 • 9:00AM EST

## Selling Former Assets Of AC PRODUCTS

4299 S. Apple Creek Rd. Apple Creek, OH 44606

HOTEL ACCOMMODATIONS

**MT. HOPE  
SLEEP INN  
330.294.9977**



## LIQUIDATION AUCTION

Selling the contents of an 86,000 Square Foot Building; Assets of Former Ceramics Manufacturer **AC PRODUCTS** of Apple Creek, Ohio after 50+ Years in Business



# AIR WORKS

CONSIGNMENT AUCTION LTD.



Air Works Consignment Auction, Ltd.  
PO Box 242  
Kidron OH 44636

## AUCTION CATALOG

*Thinking of Selling...?*

INDUSTRIAL EQUIPMENT AUCTIONEERS

# AIR WORKS

CONSIGNMENT AUCTION LTD.



Heavy Equipment  
Sawmill & Pallet Equip.  
Woodworking  
Metalworking  
Industrial Equipment  
Manufacturing Equipment  
Rolling Stock



(330) 845-8485 • [www.airworksauktion.com](http://www.airworksauktion.com)



## Specializing In Liquidations



*See Inside For Information On*  
**Upcoming Auctions!**

April 4, 2023 | Construction Equipment & Tools

May 24, 2023 | New Holland Dealership Liquidation