

# AIR WORKS

## AIR WORKS AUCTION



See inside for an  
Air Works Auction  
listing and Mt. Hope  
Showcase information.  
Plus many vendor ads!

# AUCTION

*Two Events... One Location*

Mt Hope Auction Grounds, 8076 SR 241, Millersburg, OH 44654

# SHOWCASE

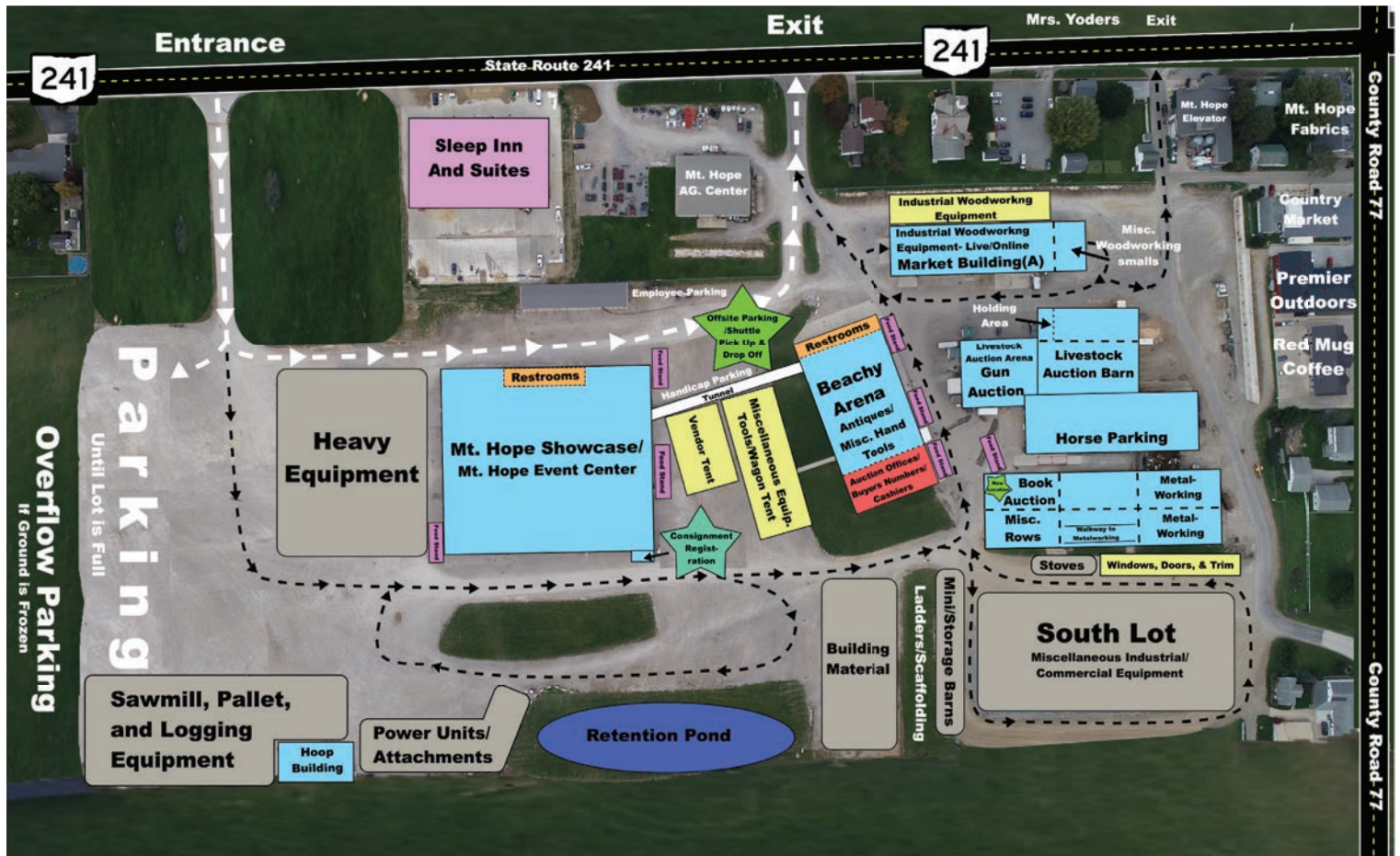
February  
17-18-19, 2022

*Mt. Hope*  
**SHOWCASE**





# Welcome to the 33rd Annual Air Works Auction!



## Air Works Consignment Auction Location: Mt Hope Auction Grounds, 8076 SR 241, Millersburg, OH 44654

### Auction Terms and Information

**Auction Terms:** Cash, Check or Credit Card w/valid ID. There will be a 7% buyer's premium on-site with an additional 3% for all credit card purchases. Different terms for Online bidding will apply. All items are sold "as is, where is with no warranty expressed or implied." Sales tax does apply unless exempt.

**Auction Information:** For complete and updated auction details, catalogs & photo's as well as online bidding links, visit [AirWorksAuction.com](http://AirWorksAuction.com) or [AuctionZip.com](http://AuctionZip.com) auction ID 40056. (No internet = No problem) Request full auction listings and catalogs from the Air Works Auction Office at P.O. Box 242 Kidron, OH 44636 or call office at **330.749.4362**.

**Check Out & Loading:** Buyer's will need to have a paid receipt to enter auction area and before loading. Assistance for loading is available on sale day plus the following week Monday through Wednesday from 8:00 AM to 4:00 PM. NOTE: The Auction reserves the right to sell or dispose of items left on the premises 7 days after the sale. Send a copy of your paid receipt with your hauler. The lot is closed on Sunday.

**Consignment Unloading Schedule:** Monday Feb. 14th from 8:00 A.M. to 8:00 P.M., Tuesday & Wednesday Feb. 15 & 16th from 8:00 A.M. to 4:00 P.M. Thursday Morning, Feb. 17th, unloading is 7:30 to 12:00 and **RESERVED FOR OUT OF STATE CONSIGNORS**.

It is our goal that your auction experience is a pleasant one. Your understanding and compliance with the above terms will help accomplish this goal.

#### Air Works Consignment Auction, Ltd.

PO Box 242 • Kidron OH 44636

**330.749.4362 (Office)**

**330.816.0006 (Fax)**

[office@airworksauktion.com](mailto:office@airworksauktion.com)

**AirWorksAuction.com**

#### Nearby Lodging

Amish Door	330.359.7996
Berlin Encore	888.988.2414
Berlin Grande	330.403.3050
Berlin Village	330.893.2861
Carlisle Inn	855.400.2275

Comfort Inn	330.893.7400
Holiday Inn Express	234.301.9005
Sleep Inn/Mt. Hope	330.294.9977
Wallhouse	800.824.2013
Zincks Inn	330.893.6600



## Free Coffee Mug

Air Works Auction, Mt. Hope Showcase, Air Works Ltd. and AW Machinery are pleased to offer a FREE Coffee Mug during our three-day event! A limited number of mugs will be given away to the first several hundred visitors to the Vendor Tent outside the Showcase building. Quantities vary by day so make sure to visit early!



## Air Works Auction – 2nd Annual Amateur Auctioneers' Showcase

The Air Works Auction will host an Amateur Auctioneer Showcase featuring various talented rookie auctioneers. Last year's amateur showcase featured auctioneers from 11 states. If you enjoy auctioneering and want to try your hand behind the auction block this will be your opportunity to do just that. Call in and register in advance at 330.749.4362. The showcase will be a benefit auction and the Funds will go to widow Mary Ellen Troyer, and Mrs. Alvin Miller. All items will be fully donated and expect to sell approximately 200 items. All proceeds go to the benefit fund.



## 30th Anniversary Book Available

A limited quantity of Reuben Troyer's "Commemorative 30th Anniversary" book are still available! Make sure to grab yours at the Auction Office in the Main Arena.



## Ryan & Friends - Friday, February 18th @ 8:00PM

As a busy comedian performing throughout North America, Ryan receives over 500 performance invitations and accepts 175 of these annually. Whether it's his laugh-crazed theater show, his church performances, or his dynamic corporate events, there are two things his audiences have come to expect: a flawlessly clean show and sidesplitting comedy!

He's been around too. You may have seen him in the Cincinnati Inquirer, the History Channel, or as a headlining performer on Disney Cruise Lines. His 2,500 (and counting!) comedy performances have taken him to 6 continents. His largest live performance was for over 55,000 people.

Join us on Friday to meet the entire crew!



## 33rd Annual Air Works Consignment Auction – Sale Order for 2022

- Heavy Equipment/Rolling Stock & Attachments Sells Saturday, Feb 19th at 9:00 AM
- Power Units, Gensets & Big Compressors Sells Saturday, Feb 19th at 10:00 AM
- Metalworking Equipment Sells Saturday Feb. 19th at 9:00 AM (2 Auction Crews)
- Ladders & Building Materials Sells Saturday, Feb 19th at 10:00 AM
- Windows, Doors & Misc. Hardware Sells Saturday, Feb 19th at 9:00 AM
- Sawmill & Pallet Equipment Sells Friday, Feb 18th at 9:00 AM
- Woodworking Equipment Sells Friday Feb. 18th at 9:00 AM (3 – Auction Crews)
- South Lot – Misc. Industrial Rows Sells Friday 18th at 9:00 AM (3 – Auction Crews)
- New Cordless Power Tools DeWalt, Milwaukee & Makita Sells on Friday & Saturday
- Tent – Wagon Loads of Small and Misc. Rows Sells on Fri. & Sat. (3 – Auction Crews)
- Antiques & Collectibles will sell Thursday, Fri. & Sat. at 8:30 (3 to 4 Auction Crews)
- Collectible & User Book Auction Sells Fri. & Sat. (New Arena \* 2-Day Book Auction)
- Amateur Auctioneers Contest & Benefit Auction Thurs. Feb. 17th 6:30 PM (Beachy Arena)
- Ryan-n-Friends & Air Works Auction Behind the Scenes Fri. 18th 8:00 PM (Beachy Arena)

*Note: This is a generalized lineup to help you become familiar with the Air Works Auction Sale Order. Please bear in mind that this is an evolving process and that times are subject to change. Selling dates & times will be posted at all the different auction areas and locations around the Auction Grounds.*





# Heavy Equipment/Rolling Stock Sells Online/Live Saturday Feb. 19th @ 9AM



Cat D6K Dozer



Case 1150C Dozer



Case 1150C Dozer



Komatsu D41E Dozer



JD 440C Skidder



John Deere 648G3



Bobcat 751



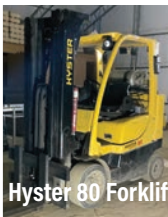
Bobcat S220



New Holland L180 Skid Steer



Cat GC18K



Hyster 80 Forklift



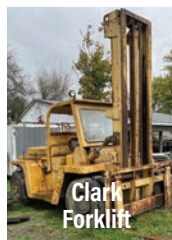
Mitsubishi FG25N Forklift



Toyota 7FGU15 Forklift



Hyster Forklift



Clark Forklift



2017 Gehl RS-519



JLG G943A Telehandler



2006 Genie GTH-636 Telehandler



1992 Peterbilt



2009 International



International



Case 650 Dozer

wheel loader; 2017 Kubota R630 wheel loader, 3200 hrs; **Skid Steers:** Bobcat S220 skid steer w/bucket, 622 hrs; New Holland L180 skid steer; Hydro Mac1700 skid steer; Bobcat 743 Skid Loader, diesel; Bobcat 751 Skid Loader, diesel. **Forklifts:** Mitsubishi FG25N forklift, 3-stage, propane, 4,500 lb, 5900 hrs; Toyota 7FGU15 forklift, propane, 3000 lb. lift; Cat GC18K forklift, 3 stage, propane, 2,000 lift, 9100 hrs; Dae-Woo G25E-3 forklift; Hyster forklift, 16,000 lb. lift, Perkins diesel; Clark 743-1 forklift, 6000 lb. lift, diesel, 7762 hrs; Hyster 80 forklift, 3 stage, propane, 7250 lbs.; Clark 95-649 forklift, 16,000 lb, gas, 2593 hrs, runs; Allis Chambers forklift, gas, 5102 hrs; Pettibone Super 6 lift w/forks, 3941 hrs; **Telehandlers:** 2017 Gehl RS-519 telehandler, 19 ft reach, 5500 lb. lift, 930 hrs.; 2 = 2006 Genie GTH-636 telehandlers, 4wd, 6,000 lb. lift, 36 ft reach, 74 hp JD engine; 2006 JLG G943A telehandler, 9,000 lb.; Genie GTH844 telehandler w/John Deere 4045T engine, 8,000 lb. lift, 4wd; **Manlifts:** Bil-Jax H527A manlift; JLG 450A, 45' manlift; Raymond EASI stand on warehouse lift, 24 volt, 216" max reach; JLG 4394Rt 53' scissor lift, 3600 hrs, gas; **Log Loaders:** John Deere 437C log loader, 11,623 hrs; Hood 24000 log loader w/JD engine; **Skidders:** John Deere 640E skidder, Cat 525 skidder w/grapple, single arch, 1000 hrs on rebuilt engine and transmission; 1981 John Deere 440C cable skidder, 100 hrs on rebuilt motor, new clutch; Set of 4, 23.1 - 26 skidder tires on Cat 16 hole rims, foam filled, 70%; **Trucks:** Peterbilt semi-tractor w/sleeper; 2009 International Pro-Star



JD 437C Knuckleboom Loader

**Dozers:** 2011 Cat D6K Dozer, 6,000 hrs, 400 hrs. on new u.c.; John Deere G Dozer w/forestry package, 7220 hrs; 1981 Case 1150C Dozer, Cummins engine; Case 1150C Dozer W/6-way blade; Case 650 Dozer W/6-way blade; Komatsu D41E Dozer, 2900 hrs., Cummins 6 cyl.; 2005 John Deere 550H LT, 5650 hrs; **Excavators:** 2012 Bobcat 324M mini excavator w/grapple, 625 hrs, includes 12" & 36" buckets; DaeWoo DH130 Excavator, 28,000 lbs. Hitachi EX50URG mini excavator, 3 cyl. Isuzu diesel, 1835 hrs; Takeuchi TB175 mini excavator; 2012 Volvo EC35C mini excavator w/4 buckets, 2710 hrs; 2008 Case 650K series 2 dozers. Wheel **Loaders:** 2015 Gehl 540-wheel loader w/Yanmar 47 hp diesel, 2 speed, cab. heat/air, 1020 hrs; 2011 Cat 930H wheel loader w/quick-tach, 7600 hrs, bucket & forks; Case W14 Wheel Loader; 2006 Atlas 65 wheel loader; Waldon 8400

Premium 6 x 4 semi-tractor w/sleeper, Cummins 550 hp engine; International semi-tractor w/double bunk, Cat engine; 1992 Peterbilt 379 semi-tractor w/day cab, 425 Cat engine, 10 speed; 2000 Freightliner, FL70, 16 ft flatbed, Cat engine, automatic; 1987 Pierce fire truck, 8.1 Cummins, 75,000 miles, automatic; 2008 Dodge Ram 2500 diesel pick up, 253,220 miles; 1986 Chevrolet C30 service truck w/Lincoln SA-250 welder, 65,950 miles; 2008 GMC 2500 Duramax crew cab truck, 400k miles; 2009 Chevy 4500 Duramax, Auto W/Service body & large hyd. Jack hammer for excavator; **Trailers:** 2021 Impact 2017 Corn Pro gooseneck trailer, 20' flat 5' dovetail, electric over hyd. brakes, tandem 8K torsion axles, LED lights; 1990 Transcraft drop-deck trailer, 48 ft; Flatbed semi-trailer, air ride, 36 ft; Pitts 3-bunk log trailer, 36 ft; 2011 American Hauler 12-ft dump trailer w/





Peterbilt



Fire Truck



Ford L9000



Freight Liner FL70



Chevy 4500 Duramax



Dump Trailer



Freightliner FL70



2008 Dodge Ram 2500



2008 GMC



2017 Kubota R630



Waldton 8400 Loader



Volvo EC35C



JCB 7270 Tractor



Kubota 4630



John Deere 1050



Hitachi Mini Excavator



Takeuchi TB175



Daewoo DH130



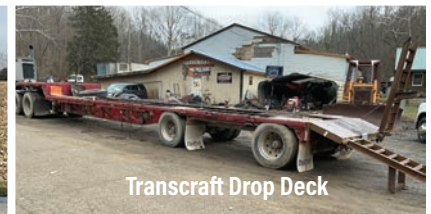
Kubota RTV 1140



Polaris 1000XP



2017 Corn Pro Trailer



Transcraft Drop Deck

ramps; Carriage LXI fifth wheel camper w/3 slide-outs; Heil 20' aluminum dump trailer, tandem, hyd, wetline; 44' Step Deck Trailer w/dove tail. **Tractors:** JCB 7270 tractor, low hrs; John Deere 1050 4x4 Tractor; Kubota 4630 4x4 Tractor W/Cab A/C & Heat; **Attachments:** 2018 CID 44" forestry disc mulcher, skid steer attachment; Bobcat 709 backhoe attachment; Bobcat 12" & 16" buckets; Bobcat single tooth ripper; Arrow Wheel Loader Forks; 3- large Excavator Thumbs; Hyd. Post Hole Drill W/2 bits; Pallet Forks; 72" hyd. Tiller; Heavy Duty Hyd. Tree shear; 72" Hyd. Power Bucket Broom;

72" Hyd. Power Broom; 72" HD Grapple Attachment; 8 - Misc. Excavator Buckets; HD SL 60" Pallet Forks; 3Pt. Hyd. 8' 2 Way Blade; 175 Tires Dr Mower/Snow Blower; Towable Hyd. Post Hole Digger w/Honda Engine; Power sweeper, 6' wide, driven w/LP gas motor; 3.5 yard quick-tach bucket, fits Cat loader. **Miscellaneous Equipment:** Polaris Ranger 1000 XP 4wd; ; Kubota RTV 1140 Diesel, 4 Seater w/hyd., dump; Polaris 500 Sportsman W/Snow Blade; Aerotecnica Coltri Model MCH 16/SH Compressed Natural-Gas Station (CNG) w/ nozzle to fill vehicles, 3500 PSI, 9 CFM, driven with NG



American Hauler 12 Ft Dump Trailer



Trailer

GX390 Honda motor, complete set-up; Ski-Doo Bombardier Retox1000SDI Mach-Z snowmobile; Garden Disk; Ground pulverizer; 7' x 20' insulated truck box; 2 = 24v forklift chargers; and more!



Gehl 530 Wheel Loader



Cat 930H



2014 Chevy Silverado 2500HD, 50,000 Miles, Z71 package, 6.0 Gas, New Tires, Exc. Condition.





## Woodworking Equipment Sells Live/Online Fri. Feb. 18th (Multiple Rings)



Cantek Straight line Rip



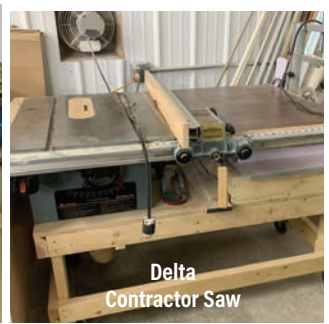
SCMI Shaper



Raiman Gang Rip



Powermatic 72



Delta Contractor Saw



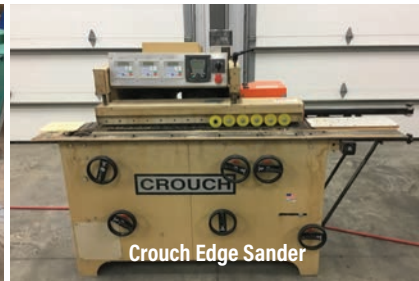
Cemco 3000



General Planer



Drum Sander



Crouch Edge Sander



Delta RT40

**Table Saws:** New Oliver 10040 10" table saw w/52" fence, 220v; 2019 Oliver table saw, lineshaft, unused; 2005 Griggio SC-32 sliding table saw, hyd; Delta Unisaw saw w/ext. table; New Jet table saw; Table saw w/Powermatic feed; Unused Delta RT40 14" table saw, flex shaft, w/electric motor & controls; Powermatic 72 table saw, 5/8" arbor, lineshaft; General 10" table saw; 2011 Shop Fox W1824 10" table saw, lineshaft; Delta table saw w/50" fence, 230v; Delta 10" contractors saw w/router table on stand w/wheels, electric; Delta 10" Unisaw w/air clutch, lineshaft; Crescent 14" table saw; Delta 9" table saw w/tilt arbor; Excaliber sliding table; **Cutoff Saws:** 2 = Omega 12" miter saws, electric; Pistorius MNV-302 double miter saw, 220v 3ph; Dewalt 12 inch miter saw on stand; Grutter upcut saw, right hand, 230v 3ph; Monical upcut saw, left hand, hyd; CRP 18" upcut saw, belt drive; Oliver 94-DH cut off saw; **Bandsaws:** New Stonewood STO-SBW350ID 14" bandsaw w/fence, 110v; Yates 52, 36" bandsaw; 22" heavy duty bandsaw w/hyd. motor; Transpower 14" bandsaw; Rockwell Delta 28-464, 14" bandsaw w/band welder; Craftsman 14" bandsaw on stand; Powermatic PWBS-14, 14" bandsaw; 30" bandsaw; Panel Saws; **Rip Saws:** SCM M3 straightline rip saw, lineshaft, unused; Diehl SL55 straightline rip, lineshaft; Raimann KM-BV-US 12" gang rip saw w/lasers, 460v 3ph; Diehl 750 straightline rip, lineshaft; Grizzly G0524 straightline rip; **Planers:** New Stonewood STO-24AH 24" planer w/digital readout, 230v 3ph; Stonewood 24" planer w/digital readout, lineshaft; Delta Rockwell 18" planer w/spiral head, lineshaft; Powermatic 221, 20 inch, 220v 3 ph; General 24 inch straight knife planer w/hyd. motor; Accura 24" planer; New Dewalt DW735 13" planer on stand; Powermatic PM15, 15" planer; Powermatic 209 20" planer w/new knives, lineshaft; J.A. Fay & Egan 24" planer, straight knife; Newman Whitney S205 30" planer w/spiral head, lineshaft; Grizzly 20" planer, lineshaft; 2 = Northtech 24" spiral head planer, double sided, 480v



Delta Shaper



Delta Unisaw



Delta Edge Sander

3 ph; **Lathes:** General International lathe on stand; Mattison 57-F lathe, 480v; Fisch turning center on stand; Delta 12" lathe; Grizzly wood lathe, lineshaft; **Jointers:** 2019 Oliver jointer, lineshaft, unused; Powermatic 60, 8" jointer, hyd; Grizzly G0495X 8 inch jointer, electric; Crescent 12" jointer; Grizzly 8" jointer, lineshaft; **Shapers:** New Stonewood STO-L5525M 1.25" spindle shaper, 230v 3ph; New Stonewood STO-JY30SP 1.25" spindle shaper, 230v 3ph; New Oliver 4705 1.25" spindle shaper, 230v 3 ph; Delta 1.25 inch shaper w/hyd.motor; SCMI 1.25" shaper w/electric power feed, 230v 3ph; SCMI 1.25" shaper w/air power feed, hyd; XL 1" shaper; Geetech CT-102 1.25" shaper w/vario drive, 220v 3ph; Jet TWSS-2-1 tilting spindle shaper; Sunhill 3/4" shaper, 230v 3ph; Crouch 315 shape-n-sand machine w/3 heads, 230v 3ph; Delta 3/4" shaper, 230v; Champ Fond shaper, air powered; Ritter 1.25" spindle shaper, hyd; **Power Feeds:** Powermatic PF-33-460, 3 roll feed; Delta 3 roll power feed, 230v; Delta power feed, electric; **Pin & CNC Routers:** Accura single-head router; **Molders: Edge & Drum Sanders:** New Oliver 6305 edge sander, 6" x 89", 110v; Progress 52 inch edge sander w/hyd. motor; New Delta edge sander; New General International drum sander; Stutzman 6" finish sander w/edge sander, electric over hyd; Crouch 245-84 edge sander, hyd; 2018 Accura MS-25 drum sander, lineshaft; Burlington 24" drum sander; Griggio 4" x 152" belt stroke sander, 220v; Samco stroke sander w/hyd. motor, 10 ft long; Kuster 37" dual drum sander; New PerformaX 10-20

Plus sander; Jet BDS-499 drum/brush sander; Enlon spindle sander; **Wide Belt Sanders:** Timesaver TB 343-4H 42" double-head wide belt sander; Cemco 3000 wide belt sander, hyd; **Boring Machines:** New Stonewood STO-16-WUS024 13 spindle line boring machine, 110v; New Conastoga PM150 pocket hole machine, air; 2016 triple head drilling machine, air powered, side & back stop adj.; 2019 Conquest boring machine, lineshaft, unused; Newton 2 spindle doweler, air powered; Pocket Master pocket hole machine, air powered; 1998 Hoonhsiang ES60 dowel machine, lineshaft; Shop built line bore machine, air; **Mortise & Tenoners:** Merein Johnson double end tenoner w/2 saws, 4' x 8' cap. 460v; Powermatic 16 mortiser, no power; Custom built end matcher, 10' x 11', lineshaft; Jet JFM-5 mortiser on stand; **Edge Banders:** Holzher Genesis 1402 SF edgebander; **Drill Presses:** New Stonewood drill press, 17" floor model, 110v; Toolex floor model drill press w/hyd. motor; Palmgren 15" floor model drill press; Shop Force 16 speed floor model drill press; **Dovetailers:** Porter Cable dovetail jig; **Door & Drawer Clamps:** New Doucet NWR8 clamp rack, 40" clamps; **Face Frame Tables:** New Stonewood STO-4008, 4' x 8' face frame table, air; New Stonewood STO-4008M 4' x 8' face frame table, manual; **Downdraft Tables:** New Dust Pro 3672 down draft table, 110v; Demray 3' x 4' down draft table, hyd; **Dust Collectors:** New Coima SHK3 dust collector w/shaker, 230v 3 ph; 2019 Cantek blower, lineshaft, unused; Troyer Machine 15" blower,





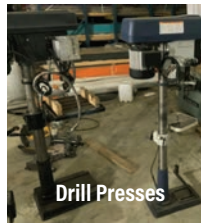
72" cyclone and stand; Donaldson Torit 25 hp dust collector w/shaker, 460v 3 ph; New Whirlwind 10" blower, lineshaft; 2018 Grizzly G0671 2 bag dust collector, 4 hp electric; Areocoustic 16" dust collector silencer; Uni-master dust collector w/ return air, 230v 3ph;



Demray Downdraft Table



Dewalt Miter Saw



Drill Presses



Finish Sander



Gang Rip



Doucet Clamp Rack



Geetech Shaper



General Lathe



SCMI Shaper



Shaper



Wood Lathe



Grutter Upcut Saw



Griggio Stroke Sander



Jet TWSS-2-1 Shaper



Monical Upcut Saw



PerformaX Drum Sander



Jet Table Saw



Stonewood Bandsaw



Stonewood Line Borer

## Selling Off-Site Approx. 12:00 Noon Friday Feb 18th

Complete dust collection system, blower (belt driven), cyclone, pipes & sawbust bin, located at 3060 S. Carr Rd Apple Creek;



Oliver 10040



Oliver Drill Press



Stonewood USA Face Frame Table



Nederman S1000 Dust Collector



DustPro Downdraft Table

## New Woodworking Equipment



Pocket Hole Machine

**NEW!**

Stonewood 24" Planer Spiralhead Cutter



Oliver 6"x89" Edge Sander



Oliver Shaper





# Sawmill/Logging & Pallet Equipment Sells Online/Live Mostly Friday Feb. 18th



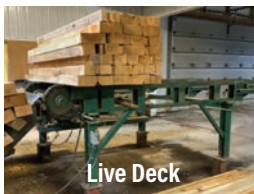
Pallet Machine



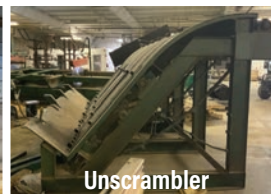
Baker Resaw



Unscrambler



Live Deck



Unscrambler



Pallet Machine



4 Strand Deck



NEW Hilltop Welding Resaw



Unscrambler



Husk



Timber Buddy XP380



Conveyor



Carriage



Conveyor



EZ Boardwalk M40

**Sawmills:** 2020 EZ Boardwalk M40 sawmill w/28 hp GX700 Honda, 1.25 inch blade, electric start, log turner, 4 clamps, demo unit on trailer package; New 2022 Timber Buddy XP380 Band sawmill, 120 hp Cummins, 2" band, computer networks, closed center hydraulics; EZ Boardwalk bandmill, 16' carriage, 24 hp Honda, electric start; JACKSON LUMBER HARVESTER Sawmill, RH circular sawmill, 50 inch blade, carriage w/40" opening and 9 knees, operators cab w/hyd. controls, log turner, 2 strand live log deck 20' L x 6' wide, 50 ft of track, 20' sawdust chain, 125 HP electric motor, 60 HP hydraulic pump unit; Frick 01 husk w/new mandrel & bearings; **Husks:** Meadows husk w/30" top saw, electric; Edmiston 56" husk, 66" shaft w/5' off bearer belt; **Carriages:** Edmiston 36" 4 head carriage, 14'6" long, 34 1/4" oc w/48' track, controls, feed, drive; Edmiston 4 hb carriage; **Chippers/Hogs/Shakers:** Precision 48" chipper, electric motor; Precision chip screen, 6'x 6'x 1 3/4"; Fulghum chip pack screen; Edgers; Frick 4 blade edger, 1 movable, 8"x 48" w/26" blades; Precision 48" chip pac; Fulghum 54" chipper, 6 knife, electric; Chip Master 48" chipper, 6 knife, 100 hp electric; Schutte Buffalo 1320 hammer mill, electric; Jeffery 34WB waste grinder w/hopper, top feed, 34" wide; **Edgers:** Frick 8" x 48" edger; Edmiston 2 blade edger, hyd; Wheland edger, 6" x 42", lineshaft. **Resaws:** Baker BBR-0 double head band resaw w/return; Walcher 102, 2 head band resaw; Lieder 8" gang saw; Stretson Ross 10" gang rip saw; J.A. Fay 32" bandsaw; New Hilltop Welding single head resaw, 6" x 10" cutting cap., belt drive; Bingham resaw w/return, 480v 3 ph; Morgan resaw, 480v 3ph; Brewer 9912 double arbor gang saw, w/infeed & outfeed, reconditioned, 480v 3 ph. **Debarkers:** Mellot debarker; **Trim & Chop Saws:** Hershberger E/Z Chop, automatic slab saw w/blower and conveyor, 30" blade, lineshaft; HMC ET10 double end trim saw, electric; 2=Whirlwind 18" upcut saws; Kent 14" cut off saw, 5hp motor; Double head cut off saw 2.5" x 22" cap.; Beam panel saw, 3" x 10" cap.; New Hilltop Welding manuel chop saw w/8' infeed & outfeed roller, 7" x 9" cutting cap., 4 flip stops, belt drive; **Pallet Equipment:** Industrial Resources

D-pallet stacker; Froedge 450 deduster; Clary band pallet dismantler; **Unscramblers:** Hazeldine 6165 unscrambler; Ligna 6 strand unscrambler, 14 ft wide x 81 inch incline, hyd; 8 ft. unscrambler w/reduction gear & motor; Shop Built 4 strand, 8 ft unscrambler, 480v 3ph; Corley 5 unscrambler, 5 strand, lineshaft; **Debarkers:** 1999 Mellot Rosserhead Debarker, model 200, cab & controls, 30 hp electric; Steel flatbed base sells separately; **Log Turners:** Mellot #5 chain drive log turner; 30" chain turner, hyd; **Conveyors:** Porter 3" x 11' conveyor; 12" x 76" conveyor w/gearbox; 24" x 30' conveyor, hyd. drive; Log trough w/kickers, 33"x 45' w/12" chain, hyd. drive; Belt conveyor, 25"x 39' w/16" belt, 5" sides; Vibrating conveyor, 34" x 40', 24" pan, 8" sides; electric; 24" x 7' belt conveyor; **Decks:** 5' x 10' 4-strand transfer deck, lineshaft; 8 ft x 10 ft 3 strand live deck, 480v 3ph; Mellot 3 strand log deck w/stop & load, 10'x 17'; 3 strand log deck, 10'x 25' w/5"steel structure; 10' stop & load deck, hyd. drive; 3 strand transfer deck, 10'4"x 8'; electric drive; 5 strand transfer deck, 10'x 15'6"; H78B rooftop chain, electric; 4 strand green chain, 10'x 60'; electric; Various decks 2 & 3 strand up to 20' long; **Rollcases:** Roll case, 40"x 37', electric drive; Roll case, 33"x 14'6", electric drive; Edger infeed rolls, 53"x 10'; hyd; M.A.Ward edger outfeed rolls, 53"x 24'; Various roll cases 16" to 30" wide x 15' to 25' long; **Notchers:** Shop Built single head runner notcher; **Barn Sweeps:** Cornell barn sweep, 42"x 24' w/34' incline, electric drive; Barn sweep w/16' chain, electric; Barn sweep w/70' of chain, incline with pan, electric; **Blowers:** Reckart 16" blower; 24" blower, electric Drive; 36" single van chip blower; Firewood Processor: Misc. Shop Built routing machine; Aro feed drills; Reliance 75, 3ph motor, 1780 rpm; 54" saw blade; Set of 4, 23.1 - 26 skidder tires on Cat 16 hole rims, foam filled, 70%; Steel racks; All electricals in off-site building; 18 = steel lumber carts; 5 hp hyd. pack; 8 = 26" edger blades; 5' cyclone; 8V1800/5 wedge banded V-belt; Various lineshafts w/pulleys & bearings; From 5 hp to 20 hp hyd. power units.



**LISTEN/BID BY PHONE** You can listen to the auction live by calling the conference line at 712.432.8773. Conference ID is (274448#) For bidding purposes, call 574.238.5292 or 574.349.8570. If you do want to bid via phone, please pre-register in advance by calling 574.238.9469 Lots will be added to this catalog so if you have fax or email, call for an updated catalog one day before the auction.





CNG Compressor



Generac



Quincy QT5



GM 47 KW Genset



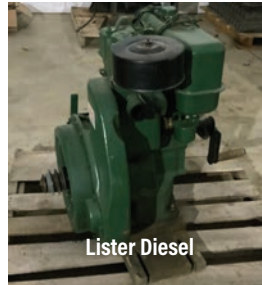
John Deere 4045



Saylor Beall



Kubota V1903-E



Lister Diesel



John Deere Diesel

**Power Units:** John Deere 4.5 liter diesel w/twin disc clutch; Perkins diesel, 44 hp, 37,476 hrs; Air cooled diesel, 10 hp; Lister diesel, rebuilt; Honda GX390, 13 hp gas; Perkins diesel, 12,000 hrs since rebuilt; John Deere 4045 diesel w/new clutch, rebuilt, murphy shutdown, 85 hp; Kubota V1903-E diesel w/new clutch, murphy shutdown, 35 hp; John Deere 6404 diesel w/clutch, 125 hp; Duetz F4L914 diesel w/clutch, 80 hp; Duetz F3L912 diesel w/clutch, 50 hp; Kubota D1105 diesel, 25 hp; New Perkins diesel, 23 hp; Kubota V1505

diesel, 30 hp; Kubota V2403DI diesel w/clutch & turbo, 65 hp; Kubota V2203 diesel, 35 hp; Cummins 5.9 diesel w/new clutch & turbo, 174 hp; Duetz 3L1011F diesel, 32 hp; 2-Yuchai diesels w/turbo, 80 hp, like new; John Deere 4039 diesel w/new clutch & turbo, 90 hp; Detroit 471 diesel w/clutch; John Deere diesel w/clutch, 3 cyl. **Hydraulic units:** Montgomery hyd. power pack w/tank & cooler; Hydraulic reservoir & pump, 20"x22"x22"; **Compressors:** Saylor Beall 25 hp air compressor; Unused Quincy QT5 air compressor; Napa 10 hp air

compressor; Quincy QT10 air compressor; Saylor Beall UL-PL-707 air compressor; 2000 Palatek 50 hp screw air compressor; **Gensets:** GM 47 kw genset w/5.7 liter natural gas engine; 30 kw natural gas genset; Isuzu Magna Plus 40 kw genset, 95 hp; 20 kw belt driven generator; Champion 5500 watt portable generator. **Phase Converters and Transformers:** Misc; Lincoln electric motor, 125 hp, 1770 RPM; 100 hp electric motor;

## Misc. Consignments & Smalls Sells Fri. & Sat. Feb. 18th & 19th

SAS HFS-405 5,000 lb. pallet scales; Uline shelving on wheels; rolling ladder, 9' high; 10 = fire extinguishers; 150 = interlocking rubber pads; 10 skids of mostly unused, in the box, pillow block & other types of bearings, sheaves, sprockets, roller chains, hydraulic pumps, electric motors, gears, etc; 2 = 8" bore x 10" stroke air cylinders; 3' x 19' belt conveyor to go from floor to floor through stairwell; ITW Mima Cobra III pallet wrapper, 115v; 100 + pieces live-edge boards in Walnut, Cherry and Maple; 4 = Maytag wringer washers, completely rebuilt; Watertite gutter machine w/coil cradle, electric; New 12 x 20 insulated office with windows; 16

pcs. 84 ft trusses, 3.5/12 p. 4 ft o.c.; Misc bunks of floor trusses, I-joists and laminated beams; Semi load of 1/2", 5/8" and 3/4" thick plywood, seconds;

**1000's of Miscellaneous Small Items:** Including air compressors, generators, welders, pressure washers, sand blasters, pallet jacks, electric motors, dust collecting systems, chop saws, electric & air tools, wrenches & socket sets, pipe threaders, lights, chain-saws, ladders, scaffolding, carpenter, mason, and concrete tools, shelving, work benches, fasteners, cords, air hoses, wheels, line-shafts and much more.



**3 Semi Loads of New Tools;** Including brands like Irwin, Milwaukee, DeWalt, Makita, Snap On, Vise Grip, Diablo, Morse, Norton and others. Includes (all new) vise grips, chalk lines, chalk, C-clamps, vises, levels, socket sets, wrench sets, bar clamps, sandpaper, sanding belts, coolers, hole saws, cordless drills, floor jacks, hand saws, hole saws, pliers, helmets, router bits, welding wire, reflective safety coats, drill bits, saw blades, cement blades, caution flags, bandsaw blades and much more. This consignment comes from a Distribution Warehouse Liquidation. We will sell this stuff individually and in bulk lots

**2 - Sessions of Brand New DeWalt, Milwaukee & Makita Tools:** We will have another very nice line-up of DeWalt cordless power tools to sell including some of the latest and greatest models and tools that DeWalt has to offer with all warranties intact. We will also have lots of new Milwaukee and Makita tools to sell in these sessions as well. \$100,000.00+ of new tools

**250+ New Sioux Air Tools:** Another nice consignment of Sioux tools including new tools, demos & salesmen's samples, of grinders, sanders, drills, riveters, chisels, impact wrenches, impact drivers, screwdrivers and more."







# Metalworking Equipment Sells Mostly Saturday, Feb. 19th



Carolina Bandsaw



Chicago 4L6 50 Ton Press Brake



Niagra HD 200 Ton Press Brake



Leblond Regal Lathe



Johnson Bandsaw



Cincinnati Bickford Drill



Deckel Milling Machine



Kalamazoo Bandsaw



Metal Mizer Bandsaw



Milton 8 ft Roll



32 x 57 Welding Table

**Milling Machines:** Enco ZX-40 drilling/ milling machine; Deckel FP4M milling machine, 5-axis travel, 17"x28" rotary table, 380v 3 ph; Cincinnati Bickford radial arm drill w/power feed, 36" arm, 9" column, 240/480 3ph; **Shears:** Pexto PE10 8 ft. manual shear; Cincinnati 1410 mechanical shear, 10 ft x 3/16" cap, 24" manual back gauge, 575v 3 ph; **Brakes:** Chicago 818, 8 ft. hand brake; Chicago 4L6 mechanical press brake, 6 ft x 50 ton, manual back gauge, 240/480 3 ph; Verson 208 mechanical press brake, 60 ton x 10 ft cap. 240/480 3 ph; Enco milling machine; Iron Workers; Mubea KBL 1/2 mechanical iron worker, 50 ton, 240/480 3 ph; Punch Presses; Bliss punch & dies; truss plate press, 22" x 6"; Warner & Swasey RA41P turret punch press w/ misc. dies; **Bandsaws:** 2 = Jet metal bandsaws; Carolina HV12 metal bandsaw, 7' x 10" cap., 110v; Johnson horizontal bandsaw, 10" x 16" cap., 240/480 3ph; Kalamazoo MS1218VS horizontal bandsaw, 12"x18" cap. swivel head, 240/480 3 ph; Metal Mizer MS2018 vertical bandsaw, mitering head, air feed, 240/460 3 ph; **Welders:** Millermatic tic welder; Hobart T-295 welder; **Lathes:** Enco 110-1351 metal lathe; Leblond Regal metal lathe, 15" x 40" cap., 240/480 3 ph; **Sanders:** Jet 577004 belt/disc. Sander; **Rollformers:** 2021 Master Metal USA 14 pass ag panel roll-former, lightly used, lineshaft ready,

includes original electric panel and motor; 2021 shear, profile matched; manual uncoiler; Milton initial pinch roll, 6 ft x 3/16" cap, 240/480 3 ph; Milton plate roll, 8 ft x 10 ga. cap., 240/480 3 ph; **Misc:** 42" x 10' welding table; 32" x 57" welding table; Handi clean parts washer; 50 + Vise grip type welders clamps; 10 + large socket & wrench sets; **Selling these 7 items Saturday Feb. 19th off-site:** Bridgeport series 1, double head milling machine w/5 ft. bed, 220v 3 ph; Lodge & Shipley 36 inch metal lathe, sn31-899, 31 ft bed, 22 ft between tail stock and chuck, double carriage, double cutter, 24 inch steady rest, 30 hp, 220/440v 3 ph; Cincinnati #4 milling machine, rebuilt, 20" x 87" table, 240/480 3 ph; Chicago #510-D mechanical press brake, 225 ton x 12 ft cap. w/24" extension air counter balance cyl., 240/480 3 ph; Lodge & Shipley #120A10 mechanical press brake, 180 ton x 12 ft cap. w air clutch, 2 speed gearbox, autotomec CNC 99 back gauge, 240/480 3 ph; 1972 Niagra HD-200-10-14 hyd. press brake, 200 ton x 14 ft cap. 124" b.h., 12" stroke, 17" max open, 30,000 lbs, 174"x56"x16" foot print, 240/480 3 ph; Pearson #12-1/4 hyd. shear, 12 ft x 1/4" cap. w/29" power back gauge, 240/480 3 ph; Call 330-749-4362 to make an appointment to view these items. 100 lots of misc. metalworking items.



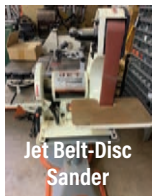
Delta Dual Grinder



Enco Metal Lathe



Enco ZX-40 Milling Machine



Jet Belt-Disc Sander



Lodge Shipley #120A10 180 Ton Press Brake



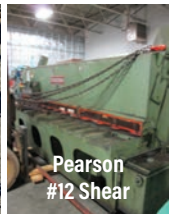
Lodge Shipley 36 inch Lathe 31 ft Bed



Milton 6 ft Roll



3.5 ft x 10 ft Welding Table



Pearson #12 Shear



Truss Plate Press



Verson 208 60 Ton Press Brake



Cincinnati #4 Milling Machine



Chicago 510-D 225 Ton Press Brake



Bridgeport 2 Milling Machine

## Liquidation Sells Fri. Feb 18th

2021 Master Metal USA 14 pass ag panel roll-former, lightly used, lineshaft ready, includes original electric panel and motor; 2021 shear, profile matched; manual uncoiler;



Cincinnati 1410 Shear



Mubea KBL 50 Ton Ironworker



# Mt. Hope SHOWCASE

**Mt. Hope Event Center**

*Adjacent to the Auction Grounds*

**FEBRUARY  
2022**

## Showcase Hours

Thursday February 17, 10AM - 7PM

Friday February 18, 7AM - 7PM

Saturday February 19, 7AM - 1PM

For information, call 330.473.7046  
**MtHopeShowcase.com**

## 2022 VENDORS

3K Machinery	Farmer's Equipment Repair	Quality Plastics
Accessa	Finishworks	Quality Sips
Airworks, Ltd.	Flack Hill Machine	Rapid Start
AISECO	Frank Miller Lumber Co	Reiff Metal Fab
AloNovus	Fraud Aware	R & S Sheet Metal LLC
A + M Gutter Guard	Georgetown Hydraulics	RT Machine
A + M Kiln Dry	Georgetown Sales	Salt - C.A.M.
Anabaptist Financial	Glass Specialties	Scarlett Machinery
Apple Outdoor Supply	Green Fast Cure	Scenic View Engine
Arthur Distribution Company	Hamilton Tool Supply	Schwartz Welding
AW Machinery	Heartland Promotional	SE Drive Shafts
Bad Dog Tools	Products	Showcase Equipment
BDH Belts	Hentzen Coatings	ShurPly
Beechy Buggy Shop	Hermance Machine	Source 3 Media
Bender's Off Grid Solutions	Hershberger Manufacturing	Solar Freeze
Bentwood Solutions	Hershey Machine	Spray Foam Solutions
Black and White Leasing	Highland Automation	Stewardship Resources
BluFlame Heaters LLC	Hilltop Welding	Stoll Brothers
Bowman Belts	Holmes Fire + Safety	Stoll Brothers Steel
B Sharp	Holmes Lumber	Buildings
Buckeye Hardware Dist.	Holmes Power Equipment	Stoll Metalworks
Busy Beaver Publications	Hometown Outdoor	Swatara Warning Lights
C & A Design	Honeyville Metal Inc	Sun Lite Enterprises
Cardinal Hollow Repair	Hoover Pump Works	Tech Bond
Century Components	Industrial Parts and Service	The Budget
Charles GG Grim	Inkscape Printing	Think Ink
Classical Construction	Interpack Systems	Timberlane Finishing
Conestoga Woodworking	Iron Bull MFG	Solutions
Supply	JC Manufacturing	TNT Welding
Countryside Metal Roofing	JD Coatings	Top Choice Roofing
Creative Woodworks	JMD Manufacturing	Trail Battery
Custom Cast	JR Heating	Troyer Machine
Custom Wood Products	Keim Lumber	Troyer Wholesale
CutCo	Lancaster Showcase	Troyer Websites
Daystar Systems	Lapp Millwright	Unicus Spray Systems
D & D Sawmill Service	Lewis and Hockenberry Inc	United Fencing
Die Botschaft	Lighthouse Installation	Unlimited Products
Dimensions In Tooling	Mann Fluid Power	of Lancaster
Dirt Digger	Masterpiece Machine Sales	Valco
Distributor Service	Maysville Harness Shop	Valleyview Wood Turning
Inc (DSI)	Midwest Machinery +	Weaver Metalworking
DJM Sales	Automation	Weaver's Magneto Repair
DJS Welding	Miller Sales	Whitetail Properties
Double R Sharpening	Miller-Tech Energy Solutions	Real Estate
DryCo Lumber	Mt. Eaton Engine Shop	Williams Toyota
Duralast	New Bedford Feed Supply	Winesburg Lawn & Charm
DW Bands	New Fab Enterprises	Engine
DYNA Products	Open Hands	Woodwork Productions
Eagle Machinery +	Oregon Ag LLC	Woodwright
Supply Inc	Outdoor Hardware Supply	Wurth Baer
Earthwise Plastics	Paint Valley Steel Wheels	Yoder Feeders
East Coast Drywall	Pat Groah	Yoder Hydraulics
E + B Enterprises	PCBE	Yoder Lumber
Elite Equine & Farm Supply	Pioneer Carriage	Yoder Service Supply
Envirosol	Pioneer Equipment	Yoder Sharpening
Esto Leaf Guard	Precision Power	Yoder's Nutrition
E+Z Boardwalk	Quality Custom Metal Works	

**2022**

Mt. Hope  
**SHOWCASE**



Air Works Consignment Auction, Ltd.

PO Box 242 · Kidron OH 44636

330.749.4362 (Office)

330.816.0006 (Fax)

office@airworksauktion.com

AirWorksAuction.com

33rd Annual Air Works Consignment Auction

# AUCTION

Antique & Collectibles Division

Thurs Feb. 17th Through Sat Feb. 19th at 8:00 AM with 2 Crews

Mt. Hope Auction Grounds · GPS Location: 8076 SR 241 Millersburg, OH 44654

Antique & Used Tools-Blacksmithing-Cast Iron Collection-Butchering-Book Collection-Gun Collections-Salesman Samples-Collectible Toys-Antiques-Collectibles-Primitives

## Thursday, February 17

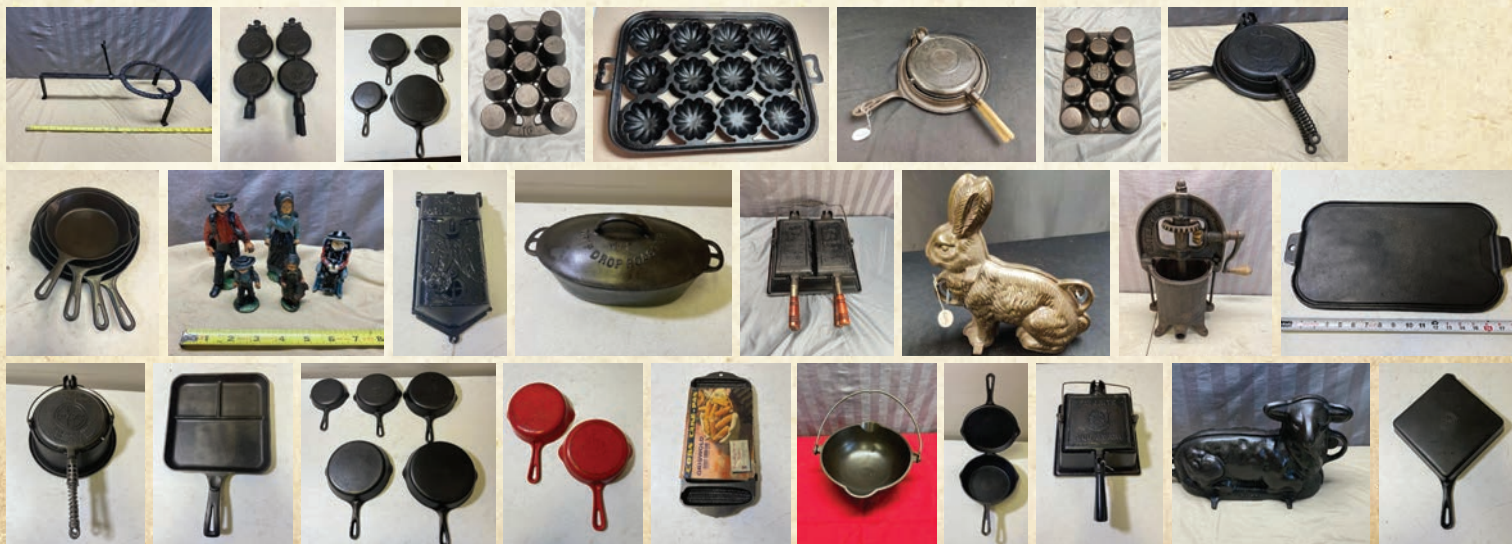
### Thursday, February 17 - 9:30 A.M., Ring 1 - Antique Tools, Misc. Collectibles & Cast Iron

100+ Axes including broad axes, fire axes, ice axes etc. 150+ Cast Iron pcs. including Griswold, Wagner and other misc. brands big and small kettles, and a variety of misc., 40+ Well Pumps & Pitcher Pumps, 50+ Vises mostly bench vises and several post vises. (140# bench vise), 20+ Lanterns including railroad, caboose light, brass lanterns and others 50+ wooden & metal barn pulleys including some very large pulleys, 100+ long handled tools including pitchforks, hay, straw & silage forks, shovels, post hole diggers, cant hooks, crosscut saws, one man saws and much more, lightning rods, weathervanes. 150 box lots including lots of hatchets, hammers, planes, wrenches, drills, auger bits, draw knives, meat cleavers these box lots will include a wide variety of good clean user and collectible name brand tools.



### Thursday, February 17 - 9:00 A.M., Ring 2 - Cataloged Cast Iron Collection

Nearly 1000 pieces of Cast Iron Including several iconic brands, such as Griswold, Erie, National, Wagner, Wapak, Piquaware, Birmingham, and others. Highlights include Numerous Slant Logo Skillets including 3,4,5,6,7,8,9,12, and 13; Nos. 2,3, & 4 Scotch Bowls, 3- No. 8 Waffle Irons, No. 8 & 10 Dutch Ovens, No. 9 Handled Griddle, No. 12 and 16 Bail Handle Griddle, and 9 x 20 inch griddle. There are HUNDREDS of Small and large block logo Griswold selling individually and in group lots from size 3 through 14. Highlights include a SUPER RARE Erie Griswold "SPIDER" as well as several #12, #13 and #14 Skillets including a 14 Favorite Smiley and a 14 WITH BAIL HANDLE. Other highlights include Wapak Indianhead Skillets, Wagner Double Hotel Waffle Maker, Numerous other waffle makers, Scotch Bowls, Cake Molds, Mailboxes, Roasters, Dutch Ovens, Lids, Skillet covers, breakfast skillets, kettles, bean pots, tea kettles, bread pans, cornstick pans, hammered skillets, griddles and loads more. With nearly 1000 pieces of cast iron comprising 700+ lots in this catalog, there is a plethora to choose from. Varying from rare collector pieces to good clean user Cast Iron there should be something for everyone.





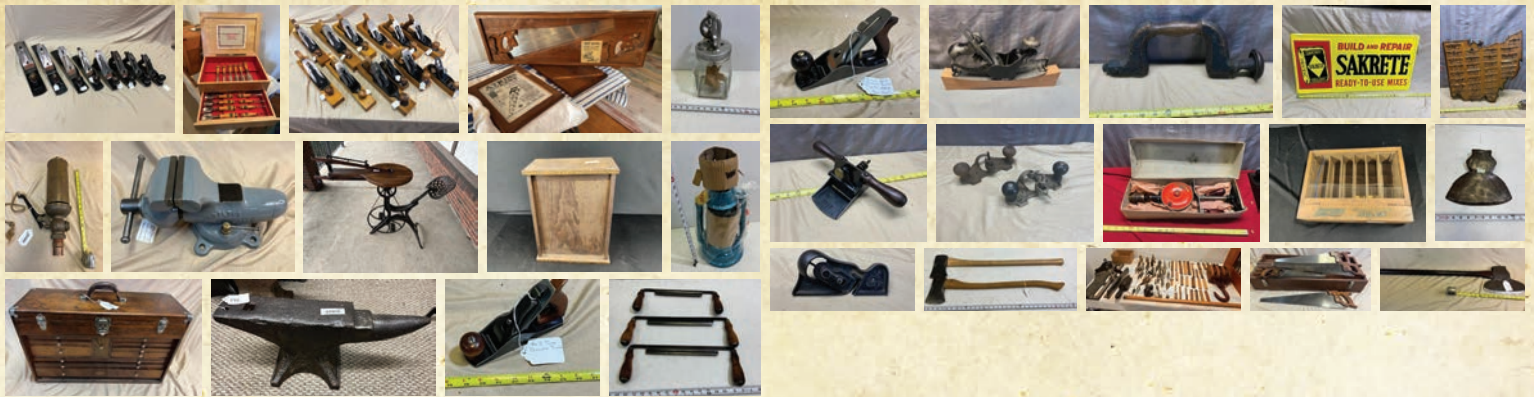
# 33<sup>rd</sup> Annual Air Works Consignment Auction

Thurs Feb. 17th Through Sat Feb. 19th at 8:00 AM with 2 Crews  
Mt. Hope Auction Grounds - GPS Location: 8076 SR 241 Millersburg, OH 44654

## Thursday, February 17

### Thursday, February 17 - 9:15 A.M., Ring 3 - Cataloged Antiques, Collectibles, Primitives

Over 900 lots of quality antique tools, salesman samples, and antiques including, Over 100 hand planes (Numerous Stanley incl. 1,2,3,4,5,5 1/4, 5 1/2, 6,7,8, 100, 101) 5 Bedrock planes including 604, 2- 605, 605C, and 607, Walnut w/ Ivory accents Hand plane, moulding planes, other planes include Union, Craftsman, Keen Kutter, Winchester, Millers Falls, some NOS & more. Other items incl. breast drills (some NOS), lots of Yankee Screwdrivers, mallets and hammers, draw knives, squares, hand saws, spoke shaves, Axes (several broad axes, and single/double-bit axes incl. Belknap, Norlund, Keen Kutter, Winchester, True Temper, Collins, Kelknap among others), Pitchforks (Keen Kutter, Shapleigh, Winchester), Dozens of Chisels, Miniatures and Saleman samples (Horse Collar, Yardsticks, Grate Bar among others), Stanley 610 Pistol Grip Drill. Blacksmithing includes Anvils, Post Vises, Wilton Vises including a miniature Wilton, Hardy Tools, & Hammers. Machinist tools, Marking Gages, Shipbuilders tools, Irwin Drill bit sets, Braces, Hand Drills, Stair Saws, Steam Whistles, Girstner Tool Chest, Plumb Bobs, Pedal Driven Scroll Saw, misc. wrenches, Carbide Lamps, Barbed wire sample, Scales and Balances, Oilers, Farm and advertising signs, Hay trolley, Ice Tongs, Hardware displays, Butcher Knives, Tool cabinets from Lufkin, Stanley and Keen Kutter. This session is packed full of quality antique tools, and group/dealer lots. Over 900 lots to choose from. The **Carl Bilderback Antique Tool Collection** represents 200 pieces of some of the cleanest antique tools that we have offered at the Air Works Auction to date. Including a complete set of Bedrock planes from 602-to-608, along with other quality Stanley Planes, RARE Atkins Salesman Sample Saw with manuals & documents, NOS 1952' E.A. Berg Chisel set, Wooden transitional planes, 40 + brass plumb bobs, 30+ wooden rulers, many other quality items.



### Thursday, February 17 - 9:45 A.M., Ring 4 - Uncataloged Antiques, Collectibles, Primitives

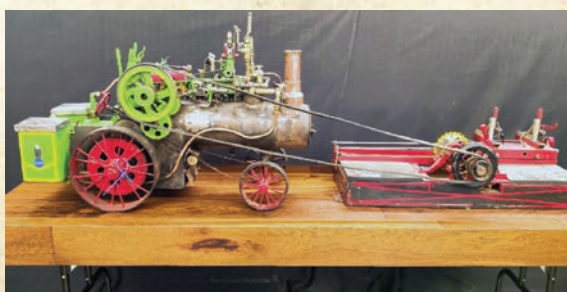
This uncatalogued session will feature approx. 1000 lots of Misc. Antiques including Antique Tools, Books, Blacksmith Items, Anvils, Butcher Items, Railroad Items, Primitives, Hay Trolleys, Agriculture Related Items. This ring features most of our late arrival antiques, it is hard to tell what will show up.



### SELLING FRIDAY!

Working Model Case  
Steam Engine & Sawmill

Working Model  
John Deere Baler





# 33<sup>rd</sup> Annual Air Works Consignment Auction

Thurs Feb. 17th Through Sat Feb. 19th at 8:00 AM with 2 Crews  
Mt. Hope Auction Grounds - GPS Location: 8076 SR 241 Millersburg, OH 44654

## Friday, February 18

### Friday, February 18 - 8:30 A.M., Ring 2 - Antique Tools, Cast Iron, Blacksmithing, Model Engines, Salesman Samples & Miniatures, Bells & Steam Whistles, Watch Collection

**8:30:** 400+ lots of cast iron. Unquestionably the best selection of rare cast iron ever offered at Air Works.

A few highlights include: Griswold #1, Erie #1, several Griswold #2,5. Complete set Wapak Indian Heads, hotel waffles, Griswold #13s. Wagner 13's, multiple 14's, 20's, 12's. Erie Spider skillet and kettle. #13 Dutch oven w/ lid. (Salesman samples include Erie and Griswold skillets and kettles.) Miniature heart and star molds, #13 Griswold, milled bottom. Griswold French Roll, Favorite double waffle, Wagner 4 waffle, Griswold French triple waffle, Complete Griswold set #1 through 20. If you collect cast iron this is one auction you don't want to miss. Various pieces you will only get a chance to bid on once in a lifetime. **1:30:** 200 lots of blacksmith items. Approximately 70 Anvils & many miniatures. Anvil selection has many excellent, clean anvils from 70 to 120lbs. 2 bridge anvils, core anvils, etc. Hossfeld Bender, Vises to include several chain drive post vises, many post vises, including several Indian Chiefs, great selection of Tongs, Forges etc. Great selection with items for both the user and the collector.

**4:00:** 300+ lots of hand-picked items. Salesman Samples, miniatures, bells, steam whistles, tools, patent models, farm signs, model engines. (Working model Case steam engine and sawmill working model made by Milo Powers 1849.) (½ Horse hit miss engine., Leslie Horns.)

Great selection salesman samples, miniature working cannons, sample Coleman Lantern. 50 select pocket watches, model John Deere Baler, makes small, decorative bales. Model farm and construction toys, sample plow, hay tedder, silage chopper, stoves, washing machines, cultivator & many more. Winchester cannon. Too many highlights to list them all.





# 33rd Annual Air Works Consignment Auction

Thurs Feb. 17th Through Sat Feb. 19th at 8:00 AM with 2 Crews  
Mt. Hope Auction Grounds - GPS Location: 8076 SR 241 Millersburg, OH 44654

## Friday, February 18

### Friday, February 18 - 9:00 A.M., Ring 3 - Highlights & Private One Owner Collection, Cataloged W/Online Bidding

This highlight Session will feature a wide variety of high-end antiques including several private one owner collections. **Tom Douglas Collection** includes a few highlights include a Museum-quality, Complete Tool Set for making WOODEN WATER PIPES, including borers, bits, and planes interlocking pipe ends; a Spiral Hay Spear; a pair of Clamshell hay grapples; hay spears and hay harpoons, including typical two-sided harpoons and a single-sided one; Two circa 1860 Horse Hay Forks in very nice original condition with their yokes; Hay Trolleys, some powder-coated, including a wide wooden beam pulley; Various rope pulleys, well pulleys, etc.; a large No. 2 Hillsboro Foundry School/Farm bell with complete yoke; a Fredericktown Foundry No. 3 School/Farm bell, 23" in diameter; a large all-wooden Sausage Grinder and an all Wooden Sausage Stuffer; refurbished Wagner Baloney Stuffer; 50+ jugs and crocks, from miniature jugs to wax-sealer canning jars to 10 gallon crocks, many of which are labeled by known makers; two original Aunt Jemima and an original Uncle Remes cookie jars; other cookie jars; pottery "milk crocks" in multiple colors; pottery mixing and serving bowls; buggy warmers; water pitchers and bowls for wash stands, a fruit dryer in fine condition; hand hay knives and step-on hay cutters; wooden buckets & grain measures; two cast iron butchering kettles on stands and much more. **One owner collection** of 15 - miniature model steam engines, from 1903 to 1931 in name brands Weeden, Empire, Marnod, Jensen, Wileco and KJ Miller; **Other Consignments** include a Miniature items including a mini Perfection cast Iron cookstove; Miniature walk behind plow (Salesmans Sample Ben Bogy on handle); Several Fire Nozzles, Nice Collection of Steam Whistles incl. Lunkenheimer and Buckeye, Pocket Knives and Indian Artifacts. Also included are 2 Brass Train bells with finial tops. **Blacksmithing items** include 273 lb. Peter Wright Anvil, 350 Pound Anvil w/ custom stand, 160 lb. Fisher Norris, 140 lb. English Anvil a 100 Lb. Colombian Anvil, Fisher 100 lb. anvil, 100 lb. Vulcan Anvil, Several smaller anvils, Hardy Tools, Stake Anvils, Tinnens Shears, Blacksmithing Hammers. The **Knife Collection** Includes, lots of pocketknives, including Case XX pocketknives, Remington, Boker, Bear, Schatt and Morgan, Camillus, Wostenhelm, and several other quality pocket and straight knives. **Artifact collection** includes approx. 100 lots of Indian Artifacts including arrowheads, stone axes, site material, flint knives and dozens of other prehistoric artifacts. **200 + Pocket Watches** that have been cleaned, oiled, adjusted, repaired and are in good running order, Brand Names; Elgin, Waltham, Hamilton, Auguste Reymond, Henri Hoffman, Swiss Ebauche, Seth Thomas, South Bend, Illinois, Hampden, Rockford and more, from 7 to 25 Jewels, 10k - 14k gold cases, mostly late 1800's and early 1900's. **For a watch catalog call 330-749-4362** This catalog will continue to grow as we get closer to the auction date.



### Friday, February 18 - 11:00 A.M., Building B - Collectible Book Auction

The book auction will be in a new location in Building B inside of the **NEW heated sale arena** to help accommodate our largest Book Auction to date with 1000s of books to choose from. We plan on selling books for 2 days on Friday and Saturday this year. **The E & N Catalogued Book Auction:** Begins Selling at 11:00 A.M. Featuring 400+ Lots. Highlights include 1776 German Sower Bible, 1751 Ausbund signed by Joshua L. Lapp, 1745 Guldein Aeppfel and many other German books. Also, lots of Amish books, Farming books & magazines, 1000's of books W/some lots having 60 books per lot, Pearl Harbor, Civil War, Railroad, Western Comic Books, James Herriot, Readers Digest, 50's & 60's Bill O'Reilly, 100's of early Post Cards, Family Life, Canadian Whistle, Sunshine Magazine, Ambassador of Peace, Young Companion & 100's of Children's Books. **Large One Owner Collection:** featuring 200+ Lots of Slave, Civil War, Indian History & Stories as well as lots of misc. old hard cover books, Jack -o- Brien, Jack London, Walt Disney, Zane Grey, James Otis, and more. Simon Girty - The Outlaw (Very Rare), World War II, Indian Chiefs of PA, Chief Logan, Crazy Horse, Sitting Bull & many more. Uncle Tom's Cabin, Black Hawk, Twelve years a slave, lots of large pictorial History Books, Double D Westerns, Train Books and more. **Other Consignments include:** 1000 lots of good hardcover and paperback books (many from early 1900's) Mystery, Western, History, Wildlife, Civil War, WWII, CIA, FBI, true crime, children's books, biographies and more. Also, will have lots of Lone Ranger and Horatio Alger Books. (Good Collectors & Quality Reading Material!)





# 33rd Annual Air Works Consignment Auction

Thurs Feb. 17th Through Sat Feb. 19th at 8:00 AM with 2 Crews  
Mt. Hope Auction Grounds - GPS Location: 8076 SR 241 Millersburg, OH 44654

## Saturday, February 19

### Saturday, February 19 - 8:30 A.M., Ring 2 - Antique User Tools, Watches & Butchering Items

80+ pocket watches including Waltham, Illinois, Bunn Specials, Elgin, mantle clocks, butcher tools kettles, meat slicers, stuffers, grinders including several No. 32s, huge pile of hay, straw and silage forks, axes, Yankees, Breast drills, huge selection of user tools and collector tools. There will be dealer lots.



### Saturday, February 19 - 8:30 A.M., Ring 3 - Collectible Toys

200 Plus lots of Collectible Toys including brand names like John Deere, McCormick Deering, Frick, Dion, Lobsinger Bro's, Farmall, International, New Holland and others. 10+ Thrashing Machines, Steam Engines, lots of Tractors, Horse Drawn Equipment, 20+ farm implements, some w/teams, Wagons, bench wagon w/ benches, lots of toy excavating equipment, Hit & Miss Engines, Pedal Tractors.

1/8 Scale includes IH 1466 2019 PA farm show special edition, 1066, 1466, white decal, 1466 black decal, 1/16th Scale Oliver super 99, 660, JD 4020, 6410, 720, 630, Case 800 Allis Chalmers 440, 7580 and many more. Case IH Steiger 600 HD 4wd Pedal Tractor, 1940's International pedal tractor and more.





# HUGE 3-DAY GUN AUCTION

February 17-18-19, 2022

Live & Online

Mt. Hope Auction/Livestock Sale Barn - 8076 SR 241 Millersburg, OH

**5 Auctions in 3 Days - Each Auction is a One Owner Collection!**

**630+ Guns**

**Day 1 - Thursday, Feb. 17, 2022**

**1st Auction (Collection 1)**

**1:00 PM**

50 Guns, 20,000+ Rounds of Ammunition

**2nd Auction (Collection 2)**

**After first auction - Approximately 3:00 PM**

74 Guns, Ammunition, Misc. Items

**Day 2 - Friday, Feb. 18, 2022**

**3rd Auction (Collection 3)**

**9:00 AM**

200 Guns

**4th Auction (Collection 4)**

**After first auction - Approximately 1:30PM**

124 Guns, Gun Safes, Scopes and amp; ammunition

**Day 3 - Saturday, Feb. 19, 2022**

**5th Auction (Collection 5)**

**9:00 AM**

190 Guns

**For more info: [www.auctionzip.com](http://www.auctionzip.com) Auctioneer ID # 32963**

**Online bidding available through [www.proxibid.com](http://www.proxibid.com)**

**Request a catalog by email: [nweaver@safecommail.com](mailto:nweaver@safecommail.com)**

**Questions? Contact Nelson Weaver, Auctioneer: 330.763.4855**

**On Site Auction Terms:** A 7% Buyers premium applies to all sales, Must be 21 years of age to buy hand guns and 18 years of age for long guns. For Ohio residents no background paper work needed. For Non-Ohio residents must provide a photo ID and complete FFL background paperwork with Premier Outdoors. All hand guns must be shipped to an FFL Licensee, Gun Shop in your State. (Note: Review Online bidding terms Online, they are different.)

**On Site Payment Terms:** Cash, Good Check or (Credit Card w/an additional 4% premium) to be paid in full the day of auction. (Review Online Payment Terms Online.)



**Preview Hours:**  
**Thursday, Feb. 17**  
Auction 1 & 2: 11:30 am - 1:00 pm  
Auction 3 & 4: 4:30 - 6:30 pm  
  
**Saturday, Feb. 19**  
Auction 5: 7:00 - 9:00 am







**DAVE  
KAUFFMAN**

*Discover. Improve. Strengthen. Connect.*

Website: [DaveKauffmanSpeaks.com](http://DaveKauffmanSpeaks.com)

Phone: 813-580-8920

Email: [Dave@DaveKauffmanSpeaks.com](mailto:Dave@DaveKauffmanSpeaks.com)

## DO YOU NEED A BUSINESS COACH?

If you're happy with the status quo—business-as-usual—don't hire a business coach. You don't need one. But if you're unhappy with the results you've been getting, you need to consider it. For example, perhaps—

- You feel overwhelmed with what's on your plate and don't know where to focus.
- You keep missing your goals—or don't have any goals.
- Your professional and personal life are unbalanced. You're spending way too much time at work.
- Your sales have stalled or your margins have eroded.
- You're not sure you have the right people. Your hiring process feels risky and unpredictable.
- Your competitors are getting more aggressive and you're fighting harder than ever to acquire and retain customers.
- You know you need to grow professionally in order to lead your organization to the next level.

If this sounds like you—if you want something to change—you may need a business coach.



Attend  
[www.EDGEconUSA.com](http://www.EDGEconUSA.com)  
March 11-12, 2021  
in Nashville TN!


**FREE Strategy Call with Dave Kauffman,  
Please call 813-580-8920**

**Want Dave Kauffman to Speak/Train at  
your company? Call now 813-580-8920**









**WHERE QUALITY MEETS THE OUTDOORS**  
 7799 CR 77 MILLERSBURG, OH 44654  
 330.473.1028





# WHITE HORSE

## MACHINE



### Quality Tools for the Toughest Jobs



**Request  
your FREE  
140+ Page  
Tool  
Catalog!**

**Ph: 717-768-8313 | 5566 Old Phila. Pike, Gap, PA 17527 | Hours: M-F. 6-5, Sat. 7-12**



Pre-Buy a Show Booth Machine and Receive Special **"Early Bird Deals"...**

*The leading brands from the leading industrial woodworking equipment experts!*

Ask for our **NEW AW Machinery Catalog!**

**6303**  
6x89 Oscillating  
Edge Sander



**6305**  
Tilting Edge Sander



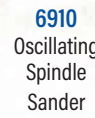
**4225**  
6" Parallelogram Jointer  
w/4-Sided Insert Helical  
Cutterhead



**10061**  
14" Swing Floor  
Model Drill Press



**6315**  
9"x138" Oscillating  
Edge Sander



**6910**  
Oscillating  
Spindle  
Sander



**4016 10"** Professional Table Saws



**10040 10"**



**4045 12"**



**4060**  
16"

**10014**  
15" Planer w/Helical  
Cutterhead



**4430**  
20" Planer w/  
Helical Cutterhead



**4705** Shaper



**10047** Shaper



*Huge selection of Oliver  
Woodworking Machinery!*



**LM116**  
Lock Miter



*Super Fast Quick  
Change Spindle!*

Power Options  
230V/460V  
Hydraulic  
Lineshaft  
**Discounts not  
available on Circle T  
machines.**

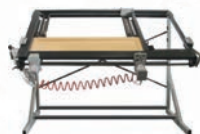


**C 117**  
Coping Machine



**C 220**  
Easy Coping  
2-Spindle Machine

## DOUCET



**SDM**  
Door Clamp



**NWR**  
Clamp Rack



**RDM**  
Rotary Door  
Clamp



**RT100**  
Robotic  
Operator

The Most **Accurate & Precise** Cutting Saw on the Market

Compact Plus

**STRIEBIG**



Compact

The Saw Blade is **GUARDED** at All Times  
for Ultimate **SAFETY**

*30% Faster Than a Sliding Table Saw*

### \*\*Complete Door System\*\*

3 Machines



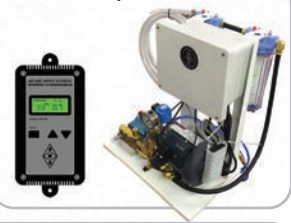
*Unlimited Performance!*



*Manage Humidity...  
Accurately, Effortlessly &  
Guaranteed!*



Fully Humidify 20,000 SF for  
Under \$10,000!



### The #1 selling indoor dust collection system!

*Heat stays indoors... saves you money!*

No outside noise  
Keeps shop super clean  
9", 12" & 16" blower inlets

Easy-to-change  
bags or dump bin  
99% efficient  
seamless Super Bag  
filter



**S-750**  
Indoor Dust Collector

**Nederman**  
DUST COLLECTION



**S-1000**  
Indoor Dust Collector

The S-Series dust collector is an enclosure-less, silent and simple to setup dust collector for your wood dust collection needs. Ideal for indoor installation, the S-Series is available in three sizes, the S-500, S-750 and S-1000 with an operating capacity of up to 5000 CFM. The fan operates at a low RPM resulting in quieter operation compared to competing indoor dust collection systems. The Super Bag filter is 99% efficient.



# February 17th, 18th & 19th

**AW** INDUSTRIAL  
WOODWORKING  
EQUIPMENT  
**Machinery**

330.778.0020

*Save Big!*

(1) \$200 Preorder Coupon, (2) Free Machine Shipping to Show and  
(3) A Special Bag of AW Goodies, Including **AW Coffee Tumblers**

Ask for our **NEW AW Machinery Catalog!**

**SBW-4300H**  
17" Bandsaw



**SBW-5300H**  
20" Bandsaw



**ST-20 (ST-24)**  
ST Series Heavy  
Duty Planer



Shear Spiral  
Cutterhead!

**STC-630 (STC-760)**  
STC Series Heavy Duty  
Planer



Shear Spiral  
Cutterhead!

**STF-630 (STF-760)**  
STF Series Heavy  
Duty Planer



**EL-610**  
Double Surface Planer



Power Options  
230V/460V  
Hydraulic  
Lineshaft

**STO-4008**  
Face Frame Table  
w/Air Clamps



**NEW!**

**STO-4008M**  
Manual Face Frame Table

**S200**  
200 Series Wide  
Belt Planer/Sander

**C1-K1**

Automatic Twin Table  
Round End Tenoner



**C1-02**

Automatic Twin Table  
Slot Mortiser



**JDT 65**

Manual Dovetailer



**JDT 75**

Automatic Dovetailer



**STO-16**

13-Spindle Line Bore

**STO-21P**

23-Spindle Pneumatic  
Line Bore



**STONEWOOD USA**  
Industrial Machinery



**STONEWOOD**  
Custom Return  
Conveyors  
*Makes a 3-person  
job to just 2!*

**DMC SD 30**

Wide Belt Sander



**DMC SD 30 RCS135**

53" 2-Head Wide Belt  
Sander



**DMC SD 30 KRCS110**

43" 3-Head Wide Belt  
Planer/Sander



**Minimax SC 4C**

Circular Saw w/Tilting Blade



**Nova SI 400**

Sliding Table Saw



Best  
Seller!\*

\*Excluding Northern Indiana

**MiniMax SC 2C**  
Sliding Table Saw



**TSM-22**

Pocket Hole Cutter



**ET-DF-III**

Pallet Jack



**WL4**

Single-Shaft Shredder



**SPM301HD**

Pocket Hole Cutter



**CS M14/M18 (14/18)**  
Lineshaft Mechanical  
Cut-Off Saw



Left

Right



**D405M-10**

10" Sliding Table Saw w/Rip Fence

**P50**

5" Sliding Table Saw



**MRS 300A**  
Multi Rip Saw

**303S**

Single Blade  
Rip Saw



**C12RSH**

12" Glue Line Rip Saw



**SRS330**

Single Blade Rip Saw

Your Source for Quality Woodworking Equipment



# AIR WORKS Ltd.



The Power Tool Connection

10680 Dover Road • Apple Creek, OH 44606  
(Ph) 330.698.0388 • (Fax) 330.698.3088  
[sales@airworksltd.com](mailto:sales@airworksltd.com)

Visit the Air Works Store

**February 14th - 19th**

Great deals on Closeouts and Bargain Tables

**Air Works Auction Pre-Order**

Place your order today to pick up when you come to the Air Works Auction

**YOU'LL SAVE ON SHIPPING & RECEIVE A BONUS GIFT!**

## Carpenter Hand Tools and Accessories



Enter drawing to win this compressor  
*at the Mt. Hope Showcase*  
**Feb 17, 18 & 19th 2022**



Register at the Air Works Ltd booth inside  
the main Expo entrance

### CONCRETE

Wire Mesh  
Foam Board  
Rebar  
Plastic  
Calcium

### TOOLS

Trowels  
Buggys  
Screeds  
Tampers  
Mixers  
Scaffolds  
Mason Tools





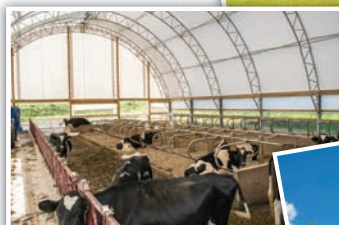




# Have You Considered A Fabric Building?



- Galvanized Steel Structure
- Natural Light
- Excellent Ventilation
- Possible Tax Reduction
- Resale Value



- 24' to 100' wide, any length
- Ventilation options
- End Kits
- Replacement covers for all brands
- Call or write for a free brochure!

## Skylight Fabric Structures



20749 State Highway VV, Ethel, MO 63539  
833-482-8862 | 660-486-3250



# FEELING OVERWHELMED?

## ...Or just need help with your High Production Orders?



Give CREATIVE WOODWORKS a try for your Beam Sawing, CNC Routing & Edgebanding needs!

### SHORT LEAD TIMES!

Our state-of-the-art facility is ready to fill your production gaps immediately!



**CREATIVE**  
WOODWORKS

128 Smokey Lane Road SW  
Sugarcreek OH 44681

330.897.2233 (Ph) • 216.359.1952 (Fax)  
sales@creativewood.works  
CreativeWood.works



# MIDSTATE

*Harness & Farrier Supply*

**989-386-4808**

6180 East Adams Road | Clare, MI 48617

**Request  
a catalog  
today!**

A nice lineup  
of Anvils, Tools,  
Shoes, Nails, Pads,  
Drilltec, and more!

**IVERMECTIN  
PASTE  
DEWORMER**

Available wholesale  
or retail.

**Your one stop for all  
your harness needs!**

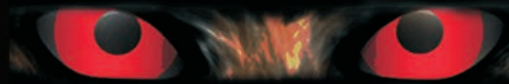
**Very competitive!**

Check us before you buy!

**Free shipping on all  
complete harness packages.**

Wholesale and retail • Shipping Daily

*Hoof care and repair products • Harnesses from A to Z  
Animal Nutrition Products • Dressed Shoes*



**NIGHT EYES**

**PREDATOR HUNTING LIGHTS**

## HL50-Q HEADLAMP

- Twin head design (one beam red or green, the other white)
- Ideal for chores and hunting
- Bright Cree LEDs
- Adjustable brightness w/memory
- Weighs only 7 oz
- Rechargeable



## GL-350 GUN LIGHT

- Illuminates target at over 350 yards
- Attaches to scope/gun in seconds
- Dual-mode silent remote switch
- Waterproof & shockproof
- Halo shield included-Rechargeable



## HS-3 SCAN LIGHT

- Three colors in one light
- One button color change
- Adjustable brightness w/memory
- Eye reflection 300 yards at 50%
- Up to 37 hrs of run time - Rechargeable



## HL08 HEADLAMP

- Fully adjustable brightness
- Eye reflection 300 yards at 50%
- 8.5 hrs run time on 50% brightness
- Halo shield included
- Weatherproof design-Rechargeable
- Weighs only 6 oz w/battery
- Available in White, Red or Green beam color



**NIGHT EYES**

113 East Church Street #520 • Centre Hall, PA 16828

**814-364-9660 • www.NightEyesLights.com**

**Had it with sanding dust?  
Bring in a pro.**

- Sanding Tables
- Sanding Booths
- Inspection Lighting

**SAND PRO®**



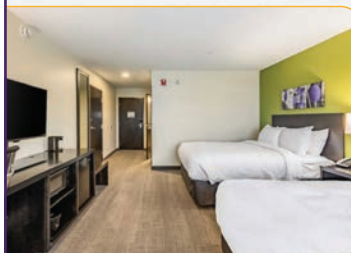
**SANDMAN Products**

*Sanding Tables, Sanding Booths, & Inspection Lighting*  
Ph: 800-265-2008 • info@sandmanproducts.com  
[www.sandmanproducts.com](http://www.sandmanproducts.com)

8050 SR 241  
Millersburg OH 44654  
(in Mt. Hope, OH)

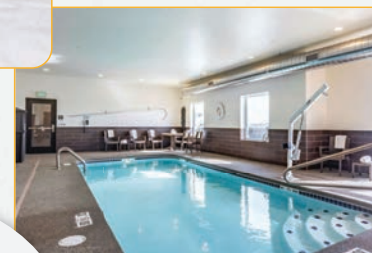


**330.294.9977**



*Our Standard Room*

*Clean, Spacious Room  
w/Complimentary Wi-Fi  
Refreshing Indoor Swimming Pool  
State-of-the-Art Fitness Room*



*\*Coin Laundry inside hotel\**



**Adjoining the Auction &  
Event Center Grounds!**

*The perfect stay when attending the  
Air Works Auction & Mt. Hope Showcase!*



# Bulk Fastener Sales

**Stainless Steel Zinc Galvanized**

**since 2005**

Cap screws ..... gr2 - gr5 - gr8  
 Carriage bolts ..... gr2 - gr5  
 Plow bolts ..... plain - zinc  
 Hex nuts ..... gr2 - gr5 - gr8  
 Flange nuts & bolts -serr or non serr  
 Lock nuts ..... nylon - grade C -2 way  
 Durham mfg complete bolt bin line

USS & SAE flat washers .. SS zn galv  
 Large dia TAPCON..... zn galv  
 Wedge anchors .....SS zn galv  
 Split anchors ..... zn  
 Lags ..... SS zn galv  
 Metric bolts & carriage bolts 8.8-10.9  
 Torx..... deck & drywall screws

- Wholesale Bulk Inventory
- Will quote special size bolt orders

- Pallet Orders FREE Shipping
- Minimum quantities apply

Call us first to quote your order      Let our volume discounts work for your business

West Ridge Supply 7420 Hwy G Stanley WI 54768  
 PH 715-644-5998 Fax 715-644-4998

## SE SHOWCASE EQUIPMENT LLC

### Own a Sawmill?

*Call, write, or email John to receive  
 our free equipment catalog*

- **Band Mills**
- **Circle Mills**
- **Band Resaws**
- **Edgers**
- **Debarkers**
- **Chippers - Grinders**
- **Transfer decks**
- **Conveyors**
- **Blowers**
- **Power units**
- **Loaders - Forklifts**

**John Yoder (Manager):**  
**260-250-3537**  
**E: jy@showcaseequipment.us**

**Address:**  
**11751 CR 12**  
**Middlebury, IN 46540**







**Pond Aeration  
Windmill**  
Lake \* Septic \* Well  
5 Sizes \* Ships Free  
440 - 236 - 3278  
Do it Yourself Kit  
100% Wind Powered  
PondAeration.com

**LAWSEN  
EQUIPMENT**  
Lawrence Sensenig - Owner

North Central Assemblies LLC  
640 Base Line Road E  
Shiloh, Ohio 44878  
**419.752.0203**




**A-M GUTTER GUARD™**  
The Difference is in the DESIGN

Original / Manufactured by: A-M Seamless Gutters, LLC

- Heavy Gauge .018 - 100% Aluminum
- Handles Downpours
- We Have **GREAT** Wholesale Prices!

**Call: 440-321-5336**  
Talk to us about Dealer Opportunities  
Call Today to Have it Shipped to Your Door!

EASY TO INSTALL IN NEW OR EXISTING GUTTERS

RATED #1  
By Kzimer's  
Consumer Report  
March 2019

LIFETIME WARRANTY

**BACK COUNTRY OPTICS**

New Color Catalog With Bargain Cave

We give volume discounts  
Free Shipping!  
MO Residents add 6.35% Sales Tax

Joshua Bontrager  
660-486-3202  
13006 Beechnut St, Ethel, MO 63539  
Mention code PCB5 for 5% off



ZEISS  
VORTEX  
SWAROVSKI OPTIK  
blackhound  
LEUPOLD  
ATN  
GPO  
...and more



**Anabaptist  
Foundation**

*Caring for the Gift, the Giver, and the Recipient Charities*

55 Whisper Creek Drive, Lewisburg, PA 17837  
phone: 1-800-653-9817 | fax: 1-866-230-6253  
email: info@afweb.org | afweb.org



**SKYLINE ENTERPRISES**

OUR UNIQUE DESIGN MAKES  
HANGING LAUNDRY A  
*Breeze!*

**FEATURES INCLUDE:**

- Poly or aluminum pulleys
- Powdercoat finish on metal components
- Spring lock mechanism to lock pulley
- Cable guides to prevent derailing
- Galvanized elevator pole

330.403.3010 | [skylineclotheslines.com](http://skylineclotheslines.com)  
skylinentere@gmail.com | 5452 TR 377 Millersburg, OH 44654



**Two  
Locations**



**to serve  
you better**

30 Years Of Quality Products  
THANKS FOR GROWING WITH US

**NOLT'S PRODUCE  
SUPPLIES**  
Specializing in Vegetable Growing  
Supplies and Equipment  
(717) 656-9764  
152 N. Hershey Avenue  
Leola, PA 17540

**NOLT'S GREENHOUSE  
SUPPLIES**  
Specializing in Greenhouse and  
Nursery Growing Supplies  
(717) 354-8376  
151 E. Farmersville Road  
Ephrata, PA 17522

Please Contact us for a Free Commercial Growers Catalog

**Stop the Leak!**

in cracked  
copper pipe

**Stop the leak  
permanently!**

in PVC,  
galvanized,  
HDPE &  
copper pipes  
& all tanks.

**with a Tech-Patch**  
Impervious to gas, water, oil, weather,  
dirt, grease, salt, hydrocarbons, etc.

Offered by:  
Tech-Bond Solutions  
[www.tbonding.com](http://www.tbonding.com)  
877 565 7225

Tech-Patches are a  
polymer that is quick  
& easy to apply.

Stop by our booth for the Mt. Hope Show Special  
(Distributors wanted)







## INCREASING YIELD & EFFICIENCY



### THE GRASS EATING MACHINE

- Clean cut = Faster regrowth
- Multi use — from high weeds to finish mowing in the yard
- Chop up weeds into mulch
- The Grass Hippo is in production & available in 7 different models.



### PRODUCE FARMER'S DREAM MACHINE

- Keep your weeds under control
- Chop up old crop before removing plastic
- Rent out to neighbors for extra income

**SIGN UP FOR  
OUR FREE  
NEWSLETTER**



**ABNER STOLTZFUS  
717-371-3440  
255 BUCHANON ROAD  
HONEY BROOK, PA 19344**

### ORDER YOUR MOWER TODAY

Current lead time is  
end of May.

**Abner will be at the  
Mt. Hope Showcase  
February 17, 18 & 19,  
2022 to hand out  
brochures.**

**You will find him  
sharing booth #510  
with brother-in-law  
Lancaster County  
Showcase.**

**WIN A FREE  
David J. Stoltzfus  
Book.**

**Wish Abner a  
Happy Birthday on  
February 18!**

## THE GRASS HIPPO GUARANTEE

If not satisfied a year after purchase, you may bring the mower back and we will give you a full refund.



# HOOVER'S SHAVINGS, LLC

**DISTRIBUTORS  
WANTED!**



**8170 Butler Road Hopkinsville, KY 42240**  
**270-987-6742**

## **KILN DRIED PINE SHAVINGS**

**ALSO AVAILABLE:  
RICE HULL/PINE MIX**

### **FOR SALE**

**ALSO AVAILABLE:  
PINE/HARDWOOD MIX**

## **Bales or Bulk Loads**



**BUY 2 OR MORE  
PALLET,  
RECEIVE 5%  
DISCOUNT**

**Delivery Available**  
**SEMI LOAD DISCOUNTS!**

**APPROVED FOR  
TYSON, PERDUE &  
HANDSOME BROOK  
FARMS!**



**32 yds**



**128 yds**



# Try Smart Marketing

(with our outrageously successful advertising techniques)



**Meet 250 stores on March 1-2!**

**Hurry!**

There are **only five more** 10x20 booths available.

Call us immediately and reserve a booth for only \$700 a month.

## Market Research and Industry Promotion

We have lots of tricks up our sleeves that we use to promote the American furniture industry. Just recently we took a trip to New England with James from Keystone Transport to visit some of his best customers. We learned about their furniture needs and gave them a personal invitation to the upcoming Lancaster Expo.



Reach thousands of prospective customers with our quarterly publication. The Connection reaches over 10,000 furniture buyers with 71% of those addresses in the northeast United States. Ask us about our **special show discounts at Mt. Hope Booth #511!**



Special events throughout the year, like the Lancaster Expo give you an excellent opportunity to meet furniture buyers and promote your new items. Great food, quality furniture, and lots of fun.



Our new 52,620 square foot showroom is open every business day and our staff keep your booth clean and well stocked with marketing materials. Free trucking available for booth restocks.



If you receive no leads in 1 year we will give all your money back! If you are not completely satisfied after two years we will return the amount of money you think is fair. No questions asked!

www.lancastercountyshowcase.com p:717.687.8150 f: 717.687.0196 info@lancastercountyshowcase.com



## Quality Used Equipment...

**Ackerman's**  
— EQUIPMENT & RENTAL —



1653 **TEDDER** (Enorossi, 17', good condition, one year old) **\$5,500**



8263 **BALE WRAPPER** (McHale 991 BC, one man operation from seat, round bales only, rental unit, wrapped approx. 1,700 bales, \$2,500 off new, Serial #62849) **\$19,716**



1648C **RAKE** (New Holland 258 Rolabar, excellent condition dolly wheel, air tires) **\$5,000**



8790 **MANURE SPREADER** (Lancaster, 125 bushel, serial #1440, fertilizer spinners, Honda engine drive, tailgate - manual hydraulics, rental unit) **\$10,000**



1226C **TILLER** (Maschio, 73", ready to put to a 2-wheeled cart, almost new machine used on less than 20 acres, brake shanks, rolling cage, SN HCC500428, 2017 model) **\$9,500**



3211C **DRAFT TRAIL CART** (Pioneer, rubber torsions, mech. brakes, slightly used, at consignors, rims & tires, bench seat, fenders, draft shafts, cargo tray w/ reese hitch receiver, cup holder, whip socket) **\$2,850**



1647C **PTO CART** (LK 35, 500 hours, air tires, straight axles, good condition, straight tongue) **\$8,500**



8719 **TEDDER** (4222, 22' w/ PTO, used in 2020 rental season, machine weight 2,060#, SN 201174) **\$9,600**

## We Provide Solutions...

Ackerman's has both New & Used equipment to fit your operation and budget.

Store Hours: Mon. - Fri. 7am to 5pm • Sat. 8am to 12pm

8051 SR 241 • Mt. Hope, Ohio 44660 Just across from the Event Center & Airworks Auction!

### See Our Complete Used Inventory...

Contact us for pictures and pricing, or visit

[www.ackermansequipment.com](http://www.ackermansequipment.com)

If we don't have what you're looking for, we can find it.

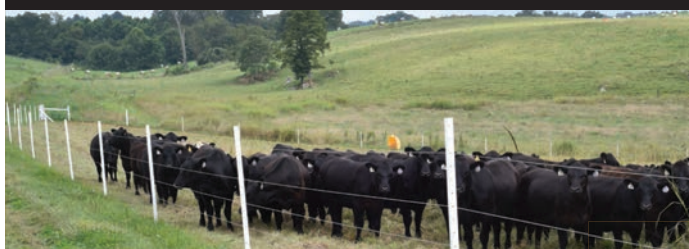
We look forward to serving you!

**330.674.0495**

**Timeless FENCE system**  
this Post **is** the Insulator!

Call us to receive  
your **FREE**  
Samples

Voted THE #1 Electric Fence Solution Since 2011



- Self-Insulating
- Never rusts or rots!
- Pre-drilled every 3"
- NRCS EQIP Approved
- Organic Approved

Let us show you how  
affordable rigid PVC posts  
are when compared to other  
types of posts.



[timelessfencesystem.com](http://timelessfencesystem.com)  
**(800) 788-4709**

## Valley Hoop Structures

3 Brands to Choose From  
Solutions from 20' to 180' wide

**2-5% OFF**  
Retail Price

**Delivered Directly To Your Location**



- Ag and Livestock
- Warehouse & Storage

**(540)-691-3753**

**Ed's Outdoor Store**

32040 Allison Road  
St. Ignatius, MT 59865

**FREE CATALOG**  
**406-745-5115**

Fax 406-745-6116 "Ich Kann Deutsch" **CLOSED SUNDAYS**

**ZEISS**  
We make it  
visible.

**VORTEX**  
OPTICS

**LEUPOLD**

**BURRIS**

**RITON**  
SEE THE DIFFERENCE

**ATHLON**  
OPTICS

**GPO**

**PULSAR**

**PULSAR**

**PULSAR**

**PULSAR**

**PULSAR**

**PULSAR**

**PULSAR**



**Trail Mix (wildlife feed) is available in bulk bins. Distributors needed!**

**Wildlife Treats • Discount Groceries • While Supplies Last! *You're Sold Out!***

**Pine Bark/Fir Hunting Blind/Fence**  
Approx. 3'x15' \$49 4'x15' \$59 5'x15' \$69

(Wildlife Feed) **Raw Mixed Nuts** etc.  
(Wildlife Feed) **BBQ Seasoned/Spicy Peanuts**  
(Wildlife Feed) **Roasted Peanuts**  
(Wildlife Feed) **Raw Peanuts w/ redskins**  
**Peanut Butter Wafers**  
**White Confectionery Drops**  
Discolor M&M's  
**Stevia Milk Choc. Gems**  
5 lb. \$19 10 lb. \$29 20 lb. \$39 45 lb. \$65

**Honey Roast Peanuts**  
Trail Mix (Wildlife Feed)  
**Hershey Chocolate Balls w/ Pretzel**  
5 lb. \$21 10 lb. \$29 20 lb. \$42 45 lb. \$69  
**Chopped Nuts** (bird feeding) 20 lb. \$35 45 lb. \$55

**Assorted Gourmet Cheese** (Very Strong)  
Approx. May contain meat and vegetable products  
5 lb. \$22 10 lb. \$33 20 lb. \$49 40 lb. \$79  
**Mozzarella Cheese Sticks**  
5 lb. \$24 10 1/2 lb. \$36 21 lb. \$55 42 lb. \$99

**White Vanilla Icing** 24 lb. \$45 50 lb. \$89  
**Red or Teal Frosting** 14 lb. \$33 28 lb. \$45  
**Chocolate Icing** 24 lb. \$47 40 lb. \$65  
**Chocolate Frosting** 35 lb. \$65  
**Malted Milk Eggs** 7.5 lb. \$21 22 lb. \$39 37 lb. \$59

**Now Offering**  
**MillerTech** Flashlights \$5 shipping U.S. 4 or more FREE SHIPPING  
Luxury LED 500 Lumen Headlamp 1-yr warranty \$29  
750 Lumen Flashlight \$39  
18 Ah Lithium 3 yr. Battery \$55  
750 Lumen Headlamp \$55

**5 YEAR WARRANTY** Rechargeable  
**Ginger Snaps** (8 oz bags)  
**Tongue Teasers** (Gummies)  
**Potato Noodles** (3 7/2 lb \$54)  
**Chocolate-Covered Peanuts** (10 lb. \$49)  
**Dark Chocolate Bark w/ graham cookie**  
**Chocolate-Covered Marshmallows**  
**Choc/Oreo Cookie Tops**  
5 lb. \$19 10 lb. \$29 20 lb. \$39 40 lb. \$59  
**Peanut Butter** 35 lb bkt. Creamy or Crunchy \$59

**Mixed Fruit Hard Candies** 2 1/4/19 Sugar-free  
**Liquid Caramel** (2 1/4 lb tubes)  
5 lb. \$21 10 lb. \$29 20 lb. \$42 40 lb. \$65

**Yogurt-I** **Sold Out!** **Pretzels**  
**Colored Cocoa Gems** (M&M's)  
**Chocolate-Covered Pretzels** (Slightly White)  
**Mini Marshmallows**  
5 lb. \$21 10 lb. \$29 15 lb. \$36 30 lb. \$53 45 lb. \$69

**Milk Choc. Wafers**

**Some items may be short-dated or outdated** (Ad updated 12/10/21)

**\$5.00 Shipping** 4+ Items = FREE SHIPPING Per order: DE, IL, IN, KY, MD, MI, MS, NC, NY, OH, PA, TN, VA, VT, WV, Canada \$40/package  
Shipping \$10.00 up to 45 lb. \$5.00 per additional pkg.; AR, FL, IA, KS, ME, MO, MN, NE, OK, WI 4+ Items = \$5 OFF SHIPPING | Shipping \$15.00 1st package, \$10.00 per additional package; AZ, CO, ID, MT, ND, NM, SD, TX, UT, WY 4+ Items = \$5 OFF SHIPPING

**5% OFF** Orders of 7+ items  
Approx 1 1/2 lb Sample \$9.00 each +S&H

**Competitive Commodities LLC**  
22 Indian Mills Road | Ballard, WV 24918  
Recorded updates (304) 753-8228  
Need a larger volume? Give us a call! Ext 7. 8:00 AM  
Order through your local distributor, Or order today by mail or phone.

**Mail order:** If item is **SOLD OUT**, shall we substitute? Yes, unless otherwise specified

**Approx 1/2 lb Sample \$5.00 each +S&H**

**ATLAS HORSEPOWER SOLUTIONS LLC**

**CHAMPIONS BANK ON IT!**

Available at Most Feed & Tack Stores!

**VETERINARY USED & RECOMMENDED**

**ALLSTAR EQUINE PADS**

ULTRA PREMIUM DA FROG NO-SHO DA GHOST SH X SH I

1-800-696-1577 • 330-553-8679 • AtlasHorsepowerSolutions.com  
8654 St. Rt. 305 Garrettsville, OH 44231

## Safe and Efficient Custom Burners

- Technical expertise and a vast array of parts.
- Burners and controls designed for your unique heating project.
- From stainless steel cookers to smokehouse burners, to any industrial project.

**Call us at Blu Flame Heaters today!**

**BLU FLAME HEATERS, LLC**

**(610) 593-0337**  
1634 Valley Rd.  
Christiana, PA 17509



# WILLIAMSFIELD, OH COMPLETE GRADE SAWMILL OPERATION FOR SALE AS AN ENTIRETY



**SELLERS: WILLIAMSFIELD  
VALLEY VENEER**

**4261 ST RT 322  
WILLIAMSFIELD, OH 44093**



**Complete  
Operations!**

**Real Estate  
Included!**

**Auctioneer's Note:**  
Williamsfield Valley Veneer is a complete turn key grade sawmill operation including rolling stock and real estate. Currently in full production. Select Enterprises has a complete late model (from 2007 to 2020) truck & trailer fleet including 5 log trucks with self loaders and is also for sale as a separate complete operation.



*2.18 – Airworks Sawmill ring – Millersburg OH*

*3.10 Triad Hardwoods – Sawmill equipment – High Point NC*

*3.11 Goldston Lumber – Sawmill Equipment – Goldston NC*

*3.23 Formerly Southbound Co – Sawmill Equipment – Bainbridge OH*

*3.25 Lake Erie Spring Consignment Auction – Mesopotamia OH*

*4.01 – Bright Star Equipment Consignment Auction – Middlebury IN*

*4.08 – Appalachian Equipment Consignment Auction – Elkin NC*

*7.01 – Bright Star Equipment Consignment Auction – Middlebury IN*

*9.23 – Showcase Equipment Consignment Auction and Expo – Wolcottville IN*

*10.1 – Bright Star Equipment Consignment Auction – Middlebury IN*

*12.31 – Bright Star Equipment Consignment Auction – Middlebury IN*



**March 25th**



**March 11th**



**See [brightstarauctions.com](http://brightstarauctions.com) for more information...**

**Call Eugene: 260.350.8953**



Eugene Hochstetler  
260.350.8953  
AU11400005

Main Office  
574.825.0704  
AC32100007





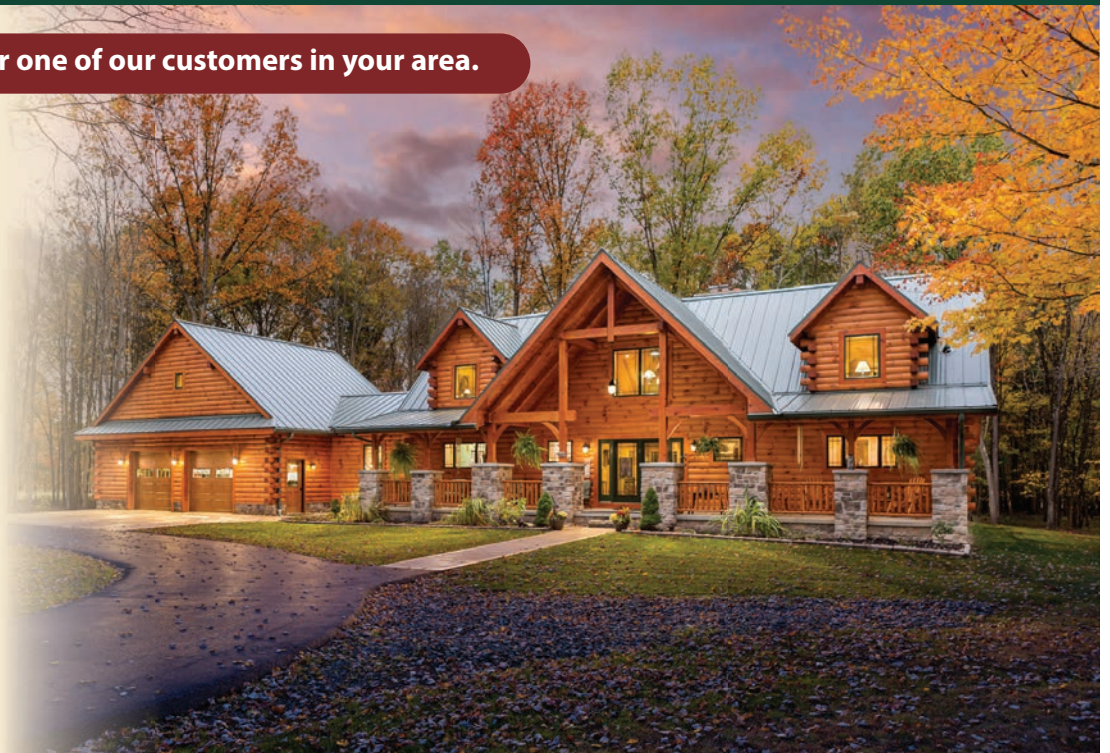
# LOG HOME BUILDERS NEEDED!

Build a "dream home" for one of our customers in your area.

Territories available in most areas especially CO, TN, NC, VA, WV, NY, MD, KY, MI, IN, North West OH, WI, OK and Canada.

Call Joseph Hochstetler at 800.368.1015 for more information.

Ask about our February "How to Workshop"



**Hochstetler Log Homes • 552 SR 95 • Loudonville, OH 44842**

**DID YOU HAVE ENOUGH CHARGING POWER LAST WINTER?**



**Efficient Charging Station**



**LION**

+



**CUB**

=



**DEWALT**

**Milwaukee**

Approximate Charging Time	1/2 hr	1hr	1 1/2 hrs
# of 5 Amp Batteries	1	2	3

**PRE-WIRED SOLAR KITS AVAILABLE**



## FEATURES:

- Use the LION for FAST charging off of any 12 volt DC power source
- Charge multiple batteries at once by connecting more CUBS to the LION
- Eliminates the inverter
- Can power as many CUBS as you need.
- Protects your 12 Volt Battery by Shutting down at 11.7 Volts
- 24 Volt and Solar-Direct options available
- USB charging port built in

Uses up to 20% Less Energy than an inverter with AC Chargers



**Circuits Alive!**

Call John at 270-465-0821

fax: 270-465-0154

779 Rolling Acres, Campbellsville, KY 42718



## Air Works Auction

Thurs. Feb. 17th 2022 at 9:00 AM

*Selling with 4 Auction Crews*

Fri. Feb. 18th 2022 at 8:30 AM

*Selling with 14 Auction Crews*

Sat. Feb. 19th 2022 at 8:30 AM

*Selling with 14 Auction Crews*

## The Mt. Hope Showcase

Thurs. Feb. 17th 2022

*10AM to 6PM*

Fri. Feb. 18th 2022

*7AM to 7PM*

Sat. Feb. 19th 2022

*7AM to 1PM*

## AIR WORKS

AIR WORKS AUCTION

Air Works Consignment Auction, Ltd.

PO Box 242 • Kidron OH 44636

330.749.4362

[AirWorksAuction.com](http://AirWorksAuction.com)

## Plan to stay all 3 days!

*Thurs., Feb. 17th • Fri., Feb. 18th • Sat., Feb. 19th*



## *A few highlights of the 2022 Air Works Auction!*

