



**30th Annual Air Works Consignment**

# AUCTION

**February 14, 15, & 16, 2019 • Mt. Hope, OH**



**AIR WORKS**

CONSIGNMENT AUCTION LTD.

Mt Hope Auction Grounds • 8076 SR 241, Millersburg, OH 44654



**AIR WORKS Ltd.**



**Mt. Hope**

**SHOWCASE**

Mt. Hope, Ohio



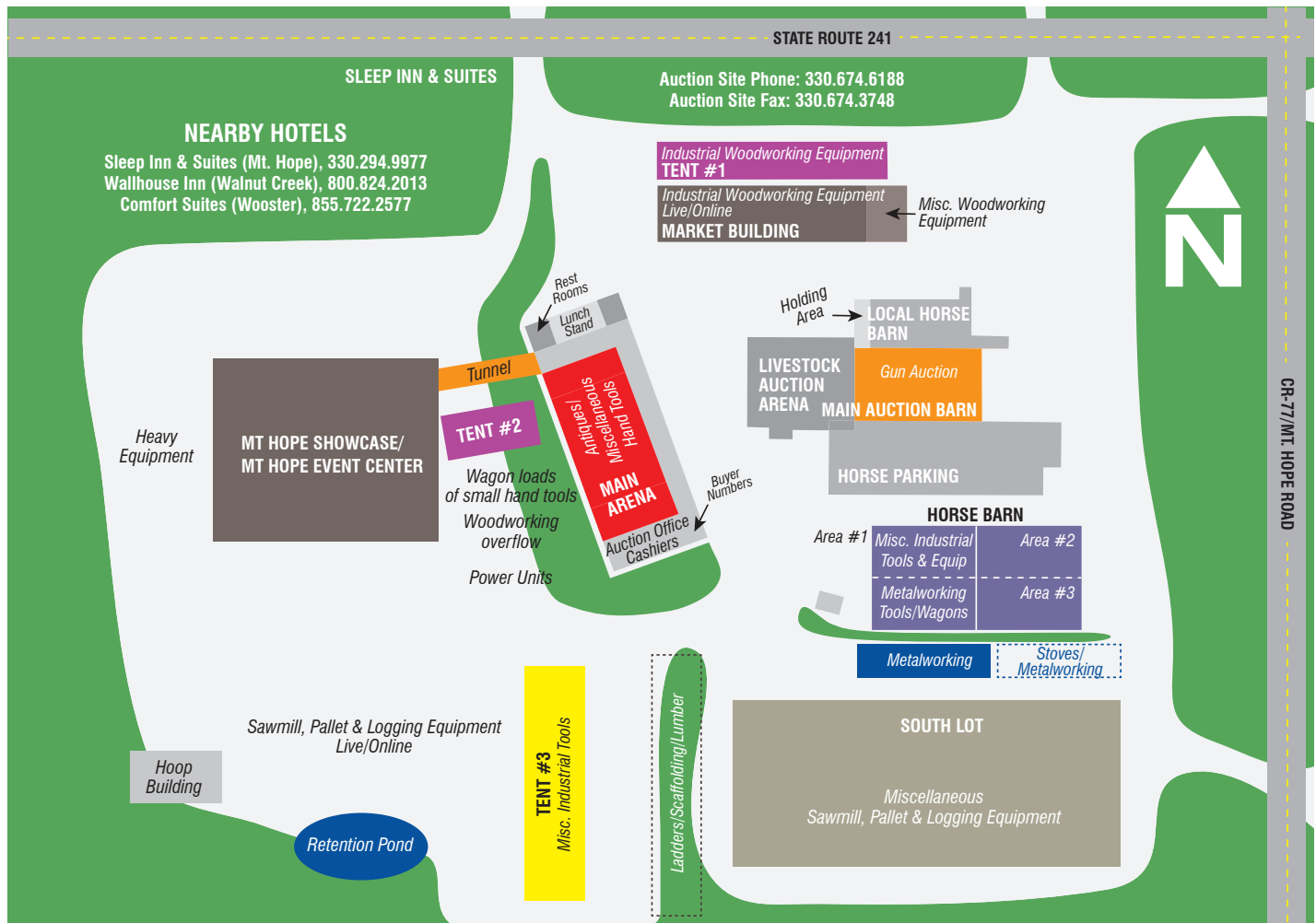
**LOOK INSIDE**



For Mt. Hope Showcase details  
plus Air Works Store and  
other vendor ads



# 30th Air Works Consignment Auction!



**Air Works Consignment Auction Location: Mt Hope Auction Grounds, 8076 SR 241, Millersburg, OH 44654**

## Auction Terms and Information

**Auction Terms:** Cash, Check or Credit Card w/valid ID. There will be a 5% buyer's premium on-site with an additional 3% for all credit card purchases. Different terms for Online bidding will apply. All items are sold "as is, where is with no warranty expressed or implied." Sales tax does apply unless exempt.

**Auction Information:** For complete and updated auction details, catalogs & photo's as well as online bidding links please visit [www.AirWorksAuction.com](http://www.AirWorksAuction.com) or visit [AuctionZip.com](http://AuctionZip.com) auction ID 40056. (No internet = No problem) Request full auction listings and catalogs from the Air Works Auction Office at P.O. Box 242 Kidron, OH 44636 or call office at **330.749.4362**.

**Check Out & Loading:** Buyer's will need to have a paid receipt to enter auction area and before loading. Assistance for loading is available on sale day plus the following week Monday through Wednesday from 8:00 AM to 4:00 PM. NOTE: The Auction reserves the right to sell or dispose of items left on the premises 7 days after the sale. Send a copy of your paid receipt with your hauler. The lot is closed on Sunday.

**Consignment Unloading Schedule:** Monday Feb. 11th – 8:00 AM to 8:00 PM, Tuesday & Wednesday Feb. 12 & Feb. 13 – 8:00 AM to 4:00 PM Thursday Morning 7:30 to 12:00 Noon (Reserved for out of state consignors).

It is our goal that your auction experience is a pleasant one. Your understanding and compliance with the above terms will help accomplish this goal.

**Air Works Consignment Auction, Ltd.**  
PO Box 242 · Kidron OH 44636  
**330.749.4362 (Office)**  
**330.816.0006 (Fax)**  
[office@airworksauktion.com](mailto:office@airworksauktion.com)  
**AirWorksAuction.com**

**REUBEN TROYER**, Manager  
**330.749.5086**  
**ELI TROYER**  
Auctioneer/Manager  
**330.317.9259**  
[eli@airworksauktion.com](mailto:eli@airworksauktion.com)  
Antiques/Liquidations

**AUCTION SITE**  
**330.674.6188**  
**DAN TROYER**  
Auctioneer/Manager  
**330.749.4353**  
[dan@airworksauktion.com](mailto:dan@airworksauktion.com)  
Woodworking Equipment

**EUGENE HOCHSTETLER**  
Auctioneer/Sawmill Manager  
**260.350.8953**  
[eh@brightstarauctions.com](mailto:eh@brightstarauctions.com)  
Sawmill, Logging & Pallet Shop



# Special Auction Events

## Looking Back at 30 Years...



In celebration of our 30th year in the auction business, a **Commemorative 30th Anniversary book, written by Reuben Troyer, will be available!** Make sure you get your autographed copy!

With \$10 purchase of book, you also receive a Commemorative Mug!

## 3-Member Roundtable of Auction Memories... Thursday, Feb. 14, 6:30-7:30PM

Steve Andrews, RES Auction  
Dave Kauffman, Kauffman Realty  
Steve Mullet, Mt. Hope Auction

Come and join us in celebrating our 30 years of the Air Works Auction with memories from our All-Star panel!

## Ryan & Friends... Thursday, Feb. 14, 7:30-8:30PM

Ryan Baumgardner

Ryan brings his talent and friends from Lancaster, PA for a special time you won't want to miss!

## Auctioneer's Showcase...



## Friday, February 15th 5:00PM to 9:00PM

It wouldn't be an Air Works Consignment Auction without the chant of the auctioneer, the hoop of a caller and the final slam of the hammer! Did you know that auctioneer's must go through schooling, perform as an apprentice auctioneer, and hold a license before becoming an auctioneer in Ohio? Join us for the **Auctioneer's Showcase on Friday, February 15th, at 5PM** to learn more!

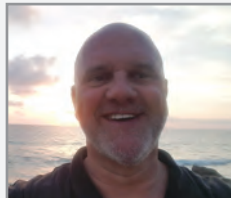
# Don't Miss the Mt. Hope Showcase!

Thurs., Feb. 14th: 12PM-6PM • Fri., Feb. 15th: 8AM-6PM; Sat. • Feb. 16th: 7AM-1PM

## Seminar Speakers



Dave Kauffman



Coach Thom Finn

**Friday, Feb. 15**  
**9:30AM to 10:30 AM**  
*The 7-Step Sales Process*

**10:30AM to 11:30 AM**  
*Basic Financial Management*

**2:00PM to 3:00PM**  
*The DISC Model/4 Levels*

**3:00PM to 4:00PM**  
*Time Management*

**Saturday, Feb. 16**  
**9:00AM to 10:00AM**  
*People Centered Leadership*

**10:00AM to 11:00AM**  
*Systemization a Small Bus.*

## Spring, 2019 Vendors

3K Machine  
Accessa  
AG Trucut  
Air Works Ltd  
AISECO  
Alonovus Corp.  
A&M Dry Kiln Ltd  
Anabaptist Foundation  
Apple Outdoor Supply  
Arthur Distributors  
AW Machinery  
Bad Dog Tools  
B&B Machinery  
Baker Products  
Bentwood Solutions  
BH Enterprises  
Black & White Leasing  
Bottom Line Mentoring  
Buckeye Hardware Dist.  
Buckeye Welding  
Buck Hollow Woodcraft  
Bunker Hill Engine  
Busy Beaver  
C&A Design  
Calmoutier Dry Kiln  
Cardinal Hollow Repair  
Century Components  
Charles GG Schmidt Co.  
Clark Deco  
Classical Construction  
Coach Thom  
Coalway

Cooper Enterprises  
Creative Power Cellulions  
Custom Service Hardware  
Custom Wood Products  
Cutco Cutlery  
David Kauffman  
Daystar Systems  
Delagrange Construction  
DES Eck Welding  
Die Botschaft  
Dimensions in Tooling  
DJM Sales  
Dryco Lumber  
DSI  
DW Bands  
Eagle Business Mgt.  
Eagle Machinery  
East Coast Drywall  
E&B Enterprises  
Farmer's Equip. Repair  
Finish Works  
Frank Miller Lumber  
Fryburg Door  
Georgetown Sales  
Glass Specialties  
Green Fast Cure  
Hafele America  
Hamilton Tool & Supply  
Hentzen Coatings  
Hernance Machine  
Hershberger Hardware  
Hershey Machine  
Hiland Wood Products  
HM Stauffer & Sons  
Holmes Lumber

Holmes Power Eq.  
Honeyville Metal Inc  
Industrial Service Supply  
Inkscape Print & Promos  
Interpack Systems Inc.  
Iron Bull Mfg.  
JAM Industries  
J&R Heating  
Keim Lumber  
Lancaster Showcase  
Lewis & Hockenberry  
LMC Hardware  
Mann Fluid Power Co.  
Mascot Sharpening  
Meadow Valley Mach.  
Michiana Equipment  
Midwest Sharpening  
Miller Maytag & Engine  
Miller Sales  
Miller Tech  
Mt. Eaton Engine Shop  
Mt. Eaton Trailer  
Plain Communities (PCBE)  
Pioneer Equipment  
Precision Power  
Quality Sips  
Rapid Start  
Rockwood Components  
RT Machine  
Salice America  
Scarlet Machinery  
SE Drive Shafts  
Showcase Equipment  
Shurply  
Southeast Equipment

Sparta Steel  
Sterling Transportation  
Stewardship Resources  
Stoll Brothers  
Stoll Brothers Steel  
Tech Bond  
The Budget  
Think Ink  
Timberline Finish Solutions  
TNT Welding  
Trail Battery  
Troyer Machine  
Troyer Wholesale  
United Fencing  
Valco Equipment  
Valley Rd. Woodworks  
Valley View Woodworking  
Weaver Metalworking  
Whitetail Properties  
Williams Toyota  
Winesburg Lawn & Garden  
Woodwright  
Wurth Baer Supply Co.  
Yoder Feeders LLC  
Yoder Hydraulics  
Yoder Lighting  
Yoder Service & Supply  
Yoder's Sharpening

*Partial listing subject  
to change*



# HEAVY EQUIPMENT / ROLLING STOCK

SELLS ONLINE/LIVE SATURDAY, FEB.16TH



Case 450B Dozer



Cat 305R Excavator



Case 850D Dozer



Kubota SVL75 Skidsteer



Komatsu D61EX-15ED



Case 580M Backhoe



Cat 914G Loader



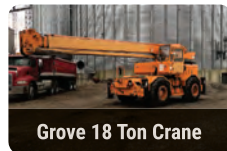
CAT 928G Loader



Volvo L50B Loader



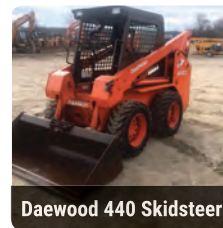
Gehl RS5-19 Telehandler



Grove 18 Ton Crane



Case 580L Backhoe



Daewoo 440 Skidsteer



ASV SR70 Skidsteer



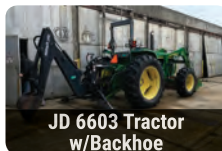
Bobcat 773 Skidsteer



Bobcat 5250 Skidsteer



CAT 242D Skidsteer



JD 6603 Tractor w/Backhoe



D21A Komatsu Dozer



XMF Trailer



MF 231 Tractor



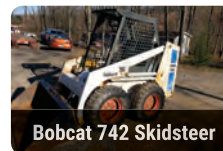
Toyota 8FGU30 Forklift



Chevy C3500 Truck



Bobcat 753 Skidsteer



Bobcat 742 Skidsteer



GMC 7500



East 48' Trailer



NH TN75S Tractor



Flatbed Trailer



Ford 3910 Tractor



JD 1530 Tractor



GMC 3500 (Gas)

**Dozers & Excavators:** Komatsu D61EX-15ED dozer, snB45728, cab heat/air; 2000 CAT D5MXL Dozer, sn6GN01924, 8036hrs; 1987 Case 850D Dozer, 3300 hrs; 290 hrs; Case 450B, 6 way blade, nice; Komatsu D-21-A dozer sn49010, 2325 hrs, w/6way blade; Komatsu D21E-6 Dozer sn65482, 6 way blade, 4150 hrs; Komatsu D21P-6 Dozer, sn70290, 6 way blade, 1460 hrs, joy stick operation; Komatsu D20P-7E Dozer, sn8024, 6 way blade, 1790 hrs, new rubber tracks; Cat 939C, sn6DS00900, Hystat track loader, heat/air, 5200 hrs; 2003 Cat 305CR mini excavator w/extra buckets, 3000 hrs; **Wheel Loaders:** Cat 928G loader w/2.9 yd bucket, snGh6XR03440, EROPS, 5200 hrs; Cat 914G w/1.8 yd bucket, sn9WM01461, EROPS, 10,600 hrs; Volvo L50B loader, 6800 hrs; **Backhoes:** 2001 Case 580M, backhoe/loader, 3.9 diesel, 4x4, 1527 hrs, excellent condition; 1998 Case 580L, backhoe/loader, 3.9 diesel, 4x4, 7612 hrs, excellent condition; 2009 John Deere 110 backhoe, sn810293, 4x4 loader w/619 backhoe attachment, 246 hrs; **Skid Steers:** 2016 Cat 242D skid steer, 219 hrs; 2000 Bobcat 773G skidsteer, 2.2 Kubota diesel, 2651 hrs, very good condition; Bobcat S250, skidsteer w/bucket, works good; Daewoo 440 skidsteer; Daewoo 460 skidsteer; Posi-Track RC100 skidsteer w/bucket; Posi-Track SR80 skidsteer; 1998 Bobcat 753C skidsteer, 2.2 Kubota diesel, 2551 hrs, excellent condition; 1988 Bobcat 742 skidsteer w/bucket & forks, 2800 hrs; **Forklifts:** 2012 Toyota 8FGU30 forklift, 6,000 lb. 2 stage, side shift, 900 hrs; Cat MC30, 3,000 lb. forklift; 1993 Teledyne Princeton piggyback forklift, D-5000, w/air cooled Hatz diesel, works good; Toyota 8HBW23, Linde forklift 7,477 hrs. 2 stage, 3900 lb. lift; battery powered pallet jack; Walkie W45XT, battery pallet jack; 13 hp walk behind forklift, 2600 lb., chain driven, works good; Barret 24v, electric, rider, pallet jack; **Cranes:** 1972 Grove 60s, 18 ton crane; **Telehandlers:** New 2018 Gehl RS5-19, 5500 lb. 19 ft. lift, 69 hp, full warranty; **Manlifts:** 2- Biljax 5533A tow behind boom lifts; **Log Loaders:** **Trucks:** Ford F-250, ext. cab, 7.3 diesel, w/tool box, work truck; GMC 3500 gas, flat bed, dually, pick up; 1992 GMC 7500 cat diesel, top kick, 6 speed, straight truck; 1988 Chevrolet C-3500, 1 ton truck, 350 V-8 gas engine, manual transmission; 42,000 miles, new tires, w/welding rig body and a 1988 Lincoln SA-250 gas engine welder, all works good; **Trailers:** 2016 Pitts low boy semi-trailer w/ramps, like new; 1993 East 48' flat bed aluminum trailer, air ride, air brakes, new tires; 2009- 6' x 10' enclosed trailer; 6' x 12' enclosed trailer, heavy duty; Grain wagon w/sides; **Tractors:** New Holland TN75S tractor w/32LC loader, 900 hrs; 2006 John Deere 6603 tractor, sn00342, 4wd w/542 bucket; Allis Chambers B, runs good; Ford 8N, engine rebuilt; John Deere 1530 tractor; Massey Ferguson 231 sn20025 tractor; Ford 3910 tractor; Massey Ferguson FM50, tractor; **Trenchers:** Case 460 trencher; Case 860 cable plow; **Stump Grinders/Mulchers:** Rayco RC35 stump grinder; Feecon 5' forestry mulcher; **Miscellaneous Equipment:** Unused tree spade; Unused Blue Diamond 7' rock hound, skidsteer mount; John Deere GU72 clam bucket, skidsteer mount; JCB HM033T jack hammer, skidsteer mount; Amerquip 9600 backhoe attachment; King Kutter 3 pt 7' scraping blade; TMG Industrial 7' blade, skidsteer attachment; JCB 5' bucket; JCB 22" mini hoe bucket; JCB 36" rake; Woods 75" yard rake.



## ATTN: NEW METHOD

Please call for a complete  
sawmill equipment catalog.

You can listen to the auction live by calling the conference line at 712.432.8773. Conference ID is BRIGHT# (or 274448#) then calling in to bid on 574.238.5292 or 574.349.8570. If you do want to bid, please preregister by calling Mel at 574.238.9469.

**Feb. 15th (Sawmill Ring) at 10 AM EST**  
8076 ST. Rt. 241 Millersburg OH 44654

**30th  
Annual!  
One you  
don't want  
to miss.**

proxibid

**Only at Air Works will you  
find such a LARGE variety  
of QUALITY sawmill/pallet  
equipment! Some Brand New!**

2018 Baker 3665D  
Bandmill, ONLY 629  
hrs.!! comes with 65 HP  
Cummins diesel, full hyd.  
package, log turner, log  
tapers, positioning rollers,  
dogs, power guide w-wide  
32" mouth, Heavy Duty and  
ready for production!



### EARLY CONSIGNMENT LIST Sawmill (Band)

- 2018 Baker 3665D production mill, part of a complete liquidation in MI (see photo)
- S&W production band mill, fully hyd. w/30 HP electric motor, joy stick controls, bar turner, low hrs. in very good con.
- EZ Cut Model 2036 BRAND NEW! (see photo)
- Woodmizer LT40 portable band mill, power feed & head up & down, very low hrs. good con.
- Portable band mill, 32"X 23' log capacity, 24 HP Honda GX690 engine w/electric start, only 94 hrs.!
- Cooks Cat Claw sharpener, in excellent con.
- Cooks Dual Tooth Setter, in excellent con.
- Cooks band roller, in excellent con.

### Sawmills (circle)

- Frick 3 HB, 36" manual, 2 of the heads are new, approx. 50' of frame & track
- Timber Tiger modular mill, 3 HB, new computer networks, operator cab, laser lights, w/drive and 50' of track
- 10, 56" circle blades, good con.

### Debarkers

- 36" HMC slant track debarker, Completely rebuilt!! 30 HP electric motor, self contained hyd. Unit, new head, new bull wheel shafts, bearings etc. excellent machine ready for production
- 36" HMC slant track debarker, in good condition, comes with cab, joystick controls, lots of new spare parts

### Edgers

- Crosby 6"X30" edger
- Twin blade woodmizer, like new
- Crosby 4"X36" 3 blade (2 movable)
- 4"X36" edger w/infeed & outfeed and lasers

### Gang saws

- Keystone gang rip reclaim saw, completely rebuilt and in excellent con.
- Pendu double arbor gang saw w/175 HP Deutz diesel, 3000 hrs. since rebuilt
- 150 new and used blades that fit Pendu gang saw,

- 1/2" 9/16" 5/8" 3/4" & 1 3/8" spacers for Pendu gang saw
- Merein Johnson 24" gang rip saw, super clean, excellent con. 3 phase

### Resaws

- Morgan resaw w/return, totally rebuilt and like new (see photo)
- Morgan resaw w/return, good con. Line shaft ready

### Chippers

- 58" Precision chipper (see photo)
- 48" Morbark 3 knife good con.
- Morbark chipper w/electric motor
- Promark 210 chipper w/18 HP Kohler engine on trailer package
- Morbark chip blower w/electric motor

### Power Unit

- Georgetown Power Unit (see photo)

### Additional equipment

- Manual chop saw w/infeed and outfeed
- Keystone cant sizer, hyd. Drive 12"
- Pendu 4400 board stacker
- Unscrambler, 3' to 16' w/gear box
- 28' vibrating conveyor
- 20' Mellot vibrating conveyor
- 24"X12' Woodmizer belt conveyor, like new!
- Woodmizer roll case, excellent con.
- 16"X16' incline conveyor
- 60' belt conveyor
- Versa powered roller conveyor
- 10' round stacking table, hyd. Drive
- 5'X20' two strand log deck
- 18' 3 strand log deck
- 3 strand cant deck w/ live roll case in one end
- Assortment of NEW Creekside dumping hoppers, 1 yd. 1 1/2 yd. 2 yd. 2 1/2 yd. open ended dumpster, quick attach dumpster,
- 72.17 to 1 gearbox, line shaft driven
- Berg barn sweep, 172' w/incline, hyd. drive



58" Precision chipper, 6 knife (3 are blocked) good con.!



Morgan Resaw, w-return, self contained hyd. unit, hyd. drive on belt conveyors w-flow control, air bag for blade tension, 25 HP electric motor, completely rebuilt and in like new con.!

**PICK UP  
THE PHONE  
AND CONSIGN  
TODAY!**



Georgetown Power Unit, 4 cyl. Deutz diesel w-8891 hrs., new hyd. pump, 100 gallon hyd. reservoir, 10,000 wat generator, air compressor w-13 HP Honda



EZ Cut Portable Bandmill, Brand New 2019 model 2036, 22 HP gas engine w-electric start.

**CONSIGN  
TODAY!!**

TERMS: CASH, APPROVED CHECK OR ANY MAJOR CREDIT CARD (3% PROCESSING FEE FOR CREDIT CARDS). FIVE PERCENT BUYERS PREMIUM ON SITE. TEN PERCENT BUYER'S PREMIUM APPLIES TO ONLINE OR PHONE BIDDERS. ALL ITEMS SOLD AS IS, WHERE IS, WITH NO WARRANTIES WHATSOEVER.

**AIR WORKS**

CONSIGNMENT AUCTION LTD.



**Your Equipment Auction Team**

**BRIGHT STAR**  
REALTY AND AUCTIONS, LLC.

To consign contact the Air Works  
Auction office at 330.749.4362  
or Eugene Hochstetler at  
260.350.8953



# WOODWORKING EQUIPMENT - SELLS FRIDAY & SATURDAY

SELLING WOODWORKING EQUIPMENT TWO RINGS ON  
FRIDAY, FEB. 15TH 9:00 AM AND ONE RING SATURDAY, FEB. 16TH 9:00 AM



Stonewood 6-Head Moulder



Nederman S-1000  
Dust Collector



Oliver 4016 10" Table Saw



Oliver 4705 1-1/4"  
Spindle Shaper



Mereen Johnson 24"  
Gang Ripsaw



Cantek Em-12  
End Matcher



Northtech 37"  
Wide Belt Sander



Ritter R46 Line  
Bore Machine



Cyclone Dust Collector with  
Bin and 14" Blower



Diehl SL52  
Straight Line Ripsaw



Dodds 25 Spindle  
Dove Tail Machine



Cantek 36"  
Wide Belt Sander



Powermatic DT-65  
Dove Tail Machine



Dodd's CNC  
Dove Tail Machine

## WOODWORKING EQUIPMENT SELLS ONLINE/LIVE MOSTLY FRIDAY FEB. 15TH (MULTIPLE RINGS)

**Saws:** Sawstop 10" Professional 3hp Tablesaw; New Oliver 4016, 10" Table saw; Delta 10" Unisaw w/52" Beismeyer fence, side table, lineshaft ready; Grizzly 10" table saw; Diehl SL-52 Straight line rip saw; Omega 1L300 Miter saw; Whirlwind 1000L chapsaw w/new arbor; Whirlwind 212L up cut saw; Oliver 4630 18" band saw; Delta 14" bandsaw; Powermatic bandsaw; Mereen Johnson 24" Gang ripsaw, exc. condition. 480v 3-Phase; Mattison 202 straight line rip saw, w/like new feed web, lineshaft ready; **Planers:** NEW - Stonewood 24" Straight knife planer; SAL-Ascom Model RS630, 24" planer w/knife sharpener, hyd. Driven; Shop fox 20" Planer, lineshaft; Accura 20" Planer w/extra knives; Woodmaster planer w/spiral cutterhead; Grizzly 20" planer; **Jointers:** NEW Oliver 0008 8" Parallelogram Jointer w/byrd cutter head; Powermatic 8" Jointer; Northfield 12MD, 12" jointer; Delta model 37-220 6" jointer; Grizzly 8" x 72" jointer; **Shapers:** NEW Oliver 4705 1-1/4" spindle shaper; SCMI T110 shaper; Powermatic 3/4 Spindle Shaper; Stonewood 1-1/4" Spindle Shaper; Minimax 1" spindle shaper w/sliding table; SCMI T110 Nova 1 1/4" spindle shaper; Ritter CR374E Shape & Sand Machine; 2004 CMM255 CNC vinyl routing machine; **Pin & CNC Routers:** Wart hog CNC router V-carve pro program 4 x 8 table, auto. Bit changer; CR Onsrud 36210 inverted router; CR Onsrud 3025 pin router; **Molders:** Weinig U-17A molder w/new quick change spiral heads, new feed rollers, set up for T & G flooring; Bridgwood 757, 5 head molder, good condition; NEW - Stonewood 6-head Molder, 40mm spindles 1-year warranty; **Sanders:** NEW Oliver 6305 6"x 89" edge sander; 36" oscillating drum sander, lineshaft ready; New MVM Dual Drum Sander, Powermatic 25" double drum Sander; Grizzly 6" x 80" edge sander; Fletcher 6" x 132" edge sander; 2-Crouch 66-48 edge sanders; Dubious brush sander; **Wide Belt Sanders:** Cantek, C371 w/DRO, 36" wide belt sander, single head; Oliver 5385 37" x 75" wide belt sander 1-year old; **Boring Machines:** Delta 13 Spindle line bore machine; Ritter R46 Line Bore machine; NEW 3-Spindle Kreg Pocket-Hole Machine, Elec; **Mortise & Tenoners:** Cantek EM-12 End Matcher; Transpower double table tenoner; Bacci twin table tenoner; Bacci 3 spindle mortiser; **Dovetailers:** Dodds Se-25CNC-2 single end CNC dovetailer; Dodds dovetailer, lineshaft ready; Dodds 25 spindle dovetailer; Powermatic JD-65 dovetailer; **Door & Drawer Clamps:** New, JLT Door clamp #717; **Downdraft Tables:** Denray 60 x 60 downdraft table; Sand Pro 26 x 48 Downdraft Table; **Dust Collectors:** NEW - Nederman S-1000 Dust Collector, 230/460v; 14" intake sawdust blower; 3-Delta 50-850 1 bag dust collectors; cyclone & 14" pipes; Delta 16" blower w/pipes; Dustek 3 bag dust collector.



# WOODWORKING EQUIPMENT - SELLS FRIDAY

## 3 EXCELLENT SHOP LIQUIDATIONS

### DRAWER SHOP LIQUIDATION

Oliver Automatic Dove Tail Machine 230v 3-Phase; JLT 190B Drawer clamp; Oakley H-15 Drawer sander, Sullivan Palatek screw air compressor; Cyclone, Saw dust bin, 12" Blower and all the piping; R&S Sheet Metal Heat exchanger w/ 80" x 80" return air filter system; K&L Hydraulic power unit w/hydraulic pumps, Tanks, and Lineshaft.



JLT Drawer Box Clamp



Oliver 6510 Automatic Dove Tail Machine



Oakley H-15 16"X40" Drawer Sander



Cyclone w/Dust Bin & 12" Blower



Heat Exchanger (R&S Sheet Metal)

### DOOR SHOP LIQUIDATION

Oliver 37" x 75" Wide Belt Sander, 1-year old 230v 3-phase; Stonewood 20" spiral head planer 230v 3-phase; Powermatic 6" Jointer spiral cutter head; SCMI T110 1-1/4" Shaper Heavy Duty; Mini Max 1" shaper w/sliding Table; JLT 79k-6-DC Door clamp, Silver Dowler machine 2-spindle, Delta power feeder, Shaper cutters and small tools.



JLT 79K -6-DC Door Clamp



Oliver 5380 37"x75" Wide Belt Sander



Stonewood 20" Planer, Spiral Cutter Head



SCMI T110 Shaper 1-1/4" (Heavy Duty)



Powermatic 54A Jointer

## COMPLETE FURNITURE SHOP LIQUIDATION, LINE SHAFT POWERED



Powermatic 1-1/4 Shaper, Lineshaft



Powermatic 66 Table Saw, Lineshaft



Northtech 37" Wide Belt Sander, Lineshaft



Powermatic Jointer 6" Spiral Head



Kreg Air Pocket Hole Machine

Powermatic 1-1/4 Shaper, Lineshaft; Powermatic powerfeed, 4-roll; Powermatic jointer 6" Spiral Head; Powermatic 66 Table Saw, Lineshaft; Northtech 37" Wide Belt Sander, Lineshaft; Sunhill 20" Planer, Lineshaft; Jet 14" Bandsaws, Lineshaft; Edge Sander 8" x 176" Lineshaft; Kreg Air pocket hole machine; Kreg Pocket hole Machine, DK; Silver Dowler 2-Spindle; Delta chop saw, Air Powered; Small tools (Will Sell choice); Omega Mec-300 chop saw, Air Powered; Champ Fond Shaper, Lineshaft; Clamp carrier 6-Section, Manual rotation; Hurst knob drilling machine; Graco G15W05 Air assist airless spray pump & gun; Cummins industrial Drill press, Air Powered; Mike Jecky Cutoff saw, Air Powered; Kremlin 10-14 Air assists airless spray pump and gun.

**THESE LOTS WILL SELL OFF SITE ON FRIDAY FEB. 15TH AT NOON FROM THE WOODWORKING AUCTION BLOCK:** R & S custom made sheet metal heat exchanger with a 80" x 80" return air filter system; 12" sawdust blower, cyclone, piping and a 6' x 8' x 10' sawdust bin; 30 hp blower, w/bin, cyclone, unloader, baghouse, foam coated to reduce noise.



# POWER UNITS/COMPRESSORS, LIQUIDATIONS & MISC.

## POWER UNITS & COMPRESSORS SELLS SATURDAY FEB. 16TH



**Power Units:** Cummins rebuilt, 5.9 diesel, 190 hp, w/twin disc clutch; John Deere 6466, rebuilt diesel, 150 hp, w/twin disc clutch; Duetz BF12L-413, 389 hp, V-12 diesel w/clutch, 2500 hrs; Cummins 6BT-152 150 hp power unit w/twin disc clutch; Cummins 4BTA-39, 116 hp, 2500 rpm, power unit w/Rockford clutch; Izusu, 32 hp engine; **Hydraulic units:** K & L hyd. Power unit w/hyd pump, tank and lineshaft; **Compressors:** Sullivan Palatek screw compressor w/heat exchanger; Sullair 40 hp air compressor, electric motor driven; Portable air compressor w/JD diesel; New Saylor Beall, 5 hp, 3 ph, air compressor, 220/480v, vertical tank; Kellogg 3 hp, 3 ph, air compressor, 220v, vertical tank; Sullivan/Palatek Air Compressor and Dryer System; **Gensets:** Cummins 175 kw, 3 phase, diesel genset; Cummins 150 kw, 3 phase, 325 hp diesel genset, starts & runs good; 2013 Cummins 100 kw genset, 700 hrs, like new; New, 25kw generator w/4 cyl. Kohler engine, LP gas; 15kw generator w/4 cyl. Deawoo diesel, 70 hrs; **Generators:** Lima Mac 300 kw, 220/480, 3 phase; 2- New Spartan Equipment 9500 watt generators. lots more coming in.

## METALWORKING EQUIPMENT SELLS MOSTLY FRIDAY FEB. 15TH

Caradco metal roofing rollformer, w/Bradbury tooling, 9" o.c. x 36" wide, 12" o.c. x 36" wide tooling available; Black Brothers Model B pinch roller/jam press; 2017 Spanco Jib Crane, free standing, 250#, 12' high; Miller/Bobcat 250nt welder w/10kw generator, 1350 hrs; Miller Bobcat 225 AMP stick welder; WB Knight milling machine w/9 x 33 power feed table, lineshaft ready Lots more coming in daily.



## BUILDING MATERIALS & SHEDS SELLS SAT. FEB. 16TH

Several small storage buildings as well as miscellaneous lots of lumber and building materials. Windows & Doors Include exterior & interior entry doors; windows including vinyl and wood. Semi load of trim and doors, including lots of Oak 6-panel doors.

## CONTRACTOR TOOLS & EQUIPMENT SELLS FRI. & SAT. FEB. 15TH & 16TH

### SPECIAL CONSIGNMENTS & SMALLS SELL FRI. & SAT. FEB. 15TH & 16TH

**Special Consignments:** Caradco Roll-former, produces standard 9" on center x 36" metal roofing. Includes Bradbury tooling; One Horse Treadmill w/attachments for air compressor hookup, wheat grinding station, 5 Gallon ice cream freezer, alternator to charge batteries and a 10' merry go round, all hooked up with an on/off clutch at each station; Custom built Zero Turn Truss Press (Electric), 10+ Maytag wringer/washers, rebuilt, 3 pallets of new hyd. Hose fittings, 7 pallets 3/4" to 1 1/4" up to 6000 psi hydraulic hose, New Alkota oil fired hot water pressure washer w/Honda motor, 2 man auger w/Honda motor; Posi-charge SVS 300 battery charger; Cram-A-Lot vertical baler, Tennant 7400 floor scrubber, 24- 11' long church pews, 70+ school desks in 3 styles.

**1000's of misc. small items:** including air compressors, generators, welders, pressure washers, sand blasters, pallet jacks, electric motors, dust collecting systems, chop saws, electric & air tools, wrenches & socket sets, threaders, lights, chainsaws, ladders, carpenter, mason, and concrete tools, shelving, work benches, fasteners, cords, air hoses, wheels, line-shafts and much more.



## LIQUIDATIONS & SPECIAL NOTICES SELLS FRIDAY, FEB. 15TH

**Complete Vinyl Window Manufacturing Liquidation; Sells Friday With Woodworking Ring in Market Building;** Greller model 0320; Sampson model MN12 and model MN14 saws; Sampson model CM500 sash cleaner; Stürtz STB SL2V-ECO double head frame & sash welder; double head tilt latch router; pivot bar router; 4- air operated frame punches.

**Event Center Liquidation:** 125- 18" x 8' tables, 100+ 6' & 8' Lifetime tables, 500+ folding chairs, 4- 24' flex conveyors, Shrink Wrapper, desks, 13- fireplace mantles, Floor fans, Sharp Printer MX314on (\$14k New), Factory Cat Magnum 27C walk behind mop, shelving, and more.

**Inventory Reductions:** 575 new and used Master Power, Jet, Campbell Hausfield & ARO Air Tools, reversible screw guns, 500 rpm 1/2" chuck screw guns, 230 rpm drills, palm sanders and more.



# Antique Tools and Collectibles Auction

Eli Troyer, Auctioneer/Manager  
**330.317.9259**  
eli@airworksauktion.com  
AirWorksAuction.com

# AUCTION

Listing &  
Schedule

proxibid  
AuctionZip  
ID# 40052

## THURSDAY, FEBRUARY 14 | 9:00 A.M., RING 2 | 600+ ANTIQUE TOOLS & COLLECTIBLES W/ONLINE BIDDING



This will be a one owner collection from Atlee Hochstetler after many years of collecting and dealing in antique tools and collectibles he has decided to liquidate his collection featuring a good selection of collector and user tools and many farm primitives. Stlyard Scales, embossed hatchets and axes, 2 girl scout and 10 boy scout hatchets, black raven axe head, lots of Stanley Tools including a #77 dowel turning machine w/8 cutters, Stanley buggy wheel nut setter, Stanley Planes include a #1, 2C, 54, 55, millers patent 41, 43 and many others. Woodrough & McParlin Panther Handsaw, many rules including a milk can rule, William Greenleaf wheel log caliber, 1800s Cincinnati marked molding planes, uncommon hammers, breast drills, hand braces, and bit sets, ice harvesting tools, variety of Winchester and Keen Kutter tools, vintage logging boots, lobster trap, 50' rive net, some farm toys and more.

## THURSDAY, FEBRUARY 14 | 12:00 RING 3 | ANTIQUE TOOLS, TRAPS, KNIVES & COLLECTIBLES W/ONLINE BIDDING



This ring will feature two sessions. **Session 1:** features a one owner collection of very clean high end antique tools & collectibles. Peter Wright 144 lb. Anvil; Stanley #43 Miller's Patent (RARE); 19th Century Rosewood Stuffed Joiner Plane; Stanley #77 Dowell Machine w/1/2" Cutter; Stanley #10 1/2C (RARE); Stanley #55 Combination Plane; Salesman Sample Post Hole Digger; 4: White Slick Chisel; 5" Brass Turnip Plumb Bob; Book Press.

**Session 2:** will feature a nice variety of tools, 50+ collectible traps, 100+ quality knives including Case xx, Schrade and many other German & American made knives. Nice Collection of Indian artifacts and miscellaneous.

## THURSDAY, FEBRUARY 14 | 9:30 A.M., RING 4 | UNCATALOGUED MISC. ANTIQUES & COLLECTIBLES



This uncatalogued session will feature approx. 1000 lots Antiques, Collectibles & Primitives including Antique Tools, Books, Blacksmith Items, Anvils, Butcher Items, Railroad Items, Primitives, Hay Trolleys, Agriculture Related Items. Studebaker Slip Scraper, 100+ Traps, Lots of Hay Straw & Silage Forks, shovels. It is hard to tell what all will show up in this ring since it features most of our late arrival antiques.



**Cast Iron Session at 10:00 AM** 200+ lots of clean cast iron related items with lots of Griswold & Wagoner pieces including a Griswold # 20, 14, and 13 and lots of other unique Griswold and Wagoner pieces in this sale as well. This sale will feature an amazing lineup of cast iron user and collectible items.

**Salesman Samples – Toys - Miniatures – Model Engines & Steam Whistles Session at 5:00 PM**

10



**FRIDAY, FEBRUARY 15 | 8:30 A.M., RING 2 | COLLECTION OF CAST IRON SEATS, HAY TROLLEYS & AG. ITEMS**



We are excited to offer this collection of cast iron seats, hay trolleys, tools, signs and miscellaneous antiques, primitives & collectibles. Collection will feature 100+ cast iron seats; including, Buckeye Type 5B (Seat), Kraus Akron O (Seat), Warrior Mower Type 3A (Seat) other seat names like McCormick, Walter A. Wood, Champion, Oliver, Buckeye, Deering, Bradleys, Stoddard, Chieftain, Superior, Noxons, Whitely and many others. Red Wing KO-Rec feeder chick waterer, Ertly JD Skidder, Burn Blue Cool W.P. Rouse & Son Thermometer, New Idea #8 manure spreader (framed poster), 20+ Hay Trolleys including a Porter Hay Trolley, The Superior Drill Co. Springfield Oh, Hay Trolley W/Pulley, The Dexter Hog Oiler, Dexter Ia W/Original Stone, Implement tool boxes, Old Signs & Thermometers, wooden pulleys, butter churns, Dr. Legear's medicine bits, corn shellers, scales, hatchets, adzes, breast drills, planes, Wayne Dalton Mt Hope, Oh. Semi. Great Variety and Quality!

**FRIDAY, FEBRUARY 15 | 2:00 P.M., RING 2 | 400+ RARE BOOK COLLECTION – CATALOGUED SALE**

Lots of German Bibles & Song Books; 1763 Saur Bible; 1785 Ausbund; 1815 Ausbund; 1849 Shem Zook Martyrs Mirror; 1735 Bible; Amish History; C.P.S.; Books from the late David Wagler; Farming Magazines; Nickle Mines Happening Newspapers; Haus Segen by David L Beiler; Western Books; Horatio Alger Jr; other Children Books; Train Magazine; Civil War; Abe Lincoln; Birding; We are cleaning off our shelves, it's hard to say what will show up. Thank you to E & N Rare books for putting together another great lineup of collectible books and a variety of good reading material.

**SATURDAY, FEBRUARY 16 | 8:30 A.M., RING 2 | COLLECTIBLE TOY AUCTION & ANTIQUES**



200+ Lots of collectible toys including 50+ lots of horse drawn toys including a 6- horse hitch Belgian horses w/wagon, hay mower, corn & grain binder, hay rake & wagon, bobsled w/horses, manure spreader, fore-carts, covered wagon and more. 40+ lots of 1/8th scale toys including a John Deere Model D-B-4010, Farmall 806 & 1206 w/dual wheels and a 560 & 460, John Deere manure spreaders, discs, JD Oliver, various tractors and more. 1/16th scale tractors including a case 500, 600 & 800, JD, International, Massey Harris, Oliver, Farmall and others. Thrashing Machines including a Dion, Red River Special, John Deere, Rumely, Case, McCormick Deering & Wood Brothers. Steam engines, pedal tractors and more. Lots more coming in.

**SATURDAY, FEBRUARY 16 | 8:30 A.M., RING 3 | BUTCHERING, 100+ POCKET WATCHES & CLOCKS**

This ring will have a variety of Antiques and collectibles but focus primarily on an excellent lineup of quality butchering related items as well as a session featuring a 100+ pocket watches & mantle clocks. Butchering Session @ 8:30 AM There will be a full line of butchering tools including 12- Enterprise #32 meat grinders (rebuilt), 20+ Enterprise sausage stuffers, 6+ copper kettles, 10+ Iron kettles, hand crank slicers, stainless tables, meat saws and other butchering related items. Pocket Watches & Mantle Clocks Session @ 10:30 AM This session will feature a nice lineup of a 100+ Elgins, Waltons and other name brand pocket watches. There will be various sizes, styles and Jewels to choose from in this collection. A nice lineup and variety of mantle clocks in this session as well. Whether you're a collector, dealer or user there should be something for everyone in this session. Miscellaneous: several like new Maytag wash machines, Dazey Butter Churns (from 1 to 8 qt.), cream separators, variety of crocks, egg baskets, dough bowls, water pumps and more.



# EXCELLENT GUN COLLECTION - AUCTION

FRIDAY, FEB. 15TH 2019 - AUCTION STARTS ON GUNS AT 9:00 AM • 350 + LONG GUNS - 1 OWNER COLLECTION

Location: Mt. Hope Auction/Livestock Sale Barn, 8076 SR 241, Millersburg OH 44654



**30 Winchester Commemoratives:** Mod. 94 Buffalo Bill 30-30 cal. #4 of 300 made in Original Hard Case & Documentation, Mod.1894 set of 2 Oliver F. Winchesters 30-30 cal. 1 of 500 NIB, Mod. 94AE .45 cal. Oldsmobile 100th Anniversary #20 of 100 New in Hard Case, 2 Mod. 9422 Boy Scouts of America NIB, Mod. 94 set of 2 Lone Star Comm. 30-30 cal. Half Rnd. Half Oct. brl. Rifle & Carbine, Mod. 94 XTR Michigan Law-men 30-30 cal. NIB, Mod. 94 Lone Star Comm. 30-30 cal., 2 Mod. 94 Theodore Roosevelt 30-30 cal. NIB, 2 Mod. 94 Cowboy Comm. 30-30 cal. NIB, Mod. 94 Cherokee Carbine 30-30 cal. NIB, Mod. 1873 America Remembers Frank MaCarthy .45 cal. #9 of 500 Very Nice, Mod. 94 set of 2 Buffalo Bills 30-30 cal. Rifle & Carbine NIB, Mod. 94 NRA Centennial 30-30 cal. NIB, Mod. 94 set of 2 30-30 cal. Rifle & Carbine Consecutive Sr #6601 & 6602, Mod. 94 John Wayne 30-40 cal. NIB, Mod. 94 Wells Fargo Co. 30-30 cal. NIB, Mod.1894 Rocky Mountain Elk Fdtn. 30-30 Win. Cal., Mod. 94 U.S. Calvary 1978 New in Hard Case, Mod. 94 Carbine American Bald Eagle .375 cal. NIB, Mod. 94 Carbine Legendary Frontiersman 38-55 cal. NIB, Mod. 94XTR Marksman 1000 Dodge Trucks 30-30 cal. NIB, Mod. 94AEXTR Chevy Outdoors Comm. 30-30 cal., Also Henry Golden Boy Eagle Scout + Ed. 22 cal. NIB, Marlin Mod. 1897 AO Annie Oakley Comm. 22 cal. NIB, Rem. Mod. 870 Special Field MI State Police Comm. 12ga., (Winchester Shotguns Incl.) Mod. 12 Skeet 28ga., 12 Mod. 42 .410ga., 3 of them are in the Original Boxes, Set of Mod. 37 Red Letters ga. 28ga. 410ga. 20ga. 16ga. 12ga., More Mod. 37's .410ga.-16ga. 2-20ga. 2-12ga., 8-12ga's -1 Featherlight, 1 w/Box, 1 w/soft case, Very Fancy Wood, 4 Mod. 12-16ga., 3 Mod. 12-20ga. Mod. 97-16ga., Mod. 41 .410ga., Mod. 9410 .410ga. NIB, Mod. 59-12ga., Mod. 1300XTR 12ga. VR,

**A Great Line of Winchester Rifles:** Mod. 55 .32 cal., Mod.1890 .22 Short cal., Mod. 1890 .22 Long cal., Mod. 1890 .22 WRF cal., 4 Mod. 1906 .22 S-L-LR cal., 3 Mod. 61 .22 S-L-LR cal., Mod. 62 .22 Short cal., Mod. 62-A, .22 Short cal., 2 Mod. 62-A S-L-LR, Mod. 63 .22 LR Super Speed Super X Auto Load, Mod. 52 .22 LR cal., Mod. 64 .32 W5 cal., Mod. 1873 .32 WCF cal. Kings Improvement, Mod. Wildcat Target Varmint .22 LR w/Box, Mod. .22 LR, Mod. 94 30-30 cal. Limited Edition NIB, 3 Mod. 94 30-30 Win. Cal., Mod. 94 .32 S-LR cal., Mod. 94 .30 WCF cal., Mod. 94AE .357 mag. w/Box, Mod. 9422 .22 S-L-LR Walnut Wood NIB, 2 Mod. 9422 .22 Win. mag. Cal., Mod. 70 243 Win cal. Standard Grade w/Original Box, Mod. 70 XTR Feather Wt. .270 cal. w/Box, Mod. 70 .30-06 Sprg. cal. Monto Carlo stock w/Check pc. NIB, Mod. 70 .264 Win mag Super Grade w/Scope, Mod. 70 .270 W by mag Stuart w/Scope, Mod. 70 .270 cal. w/Scope, Mod.70 .300 Win mag cal., Mod. 70 .243 cal. w/Scope,

**Remington Rifles:** Mod. No. 4 Rolling Block .32 S-L cal., Mod. 121 FM .22 S-L-LR, 3 Mod. 12-12A & 12C .22 S-L-LR, Mod. 241 Speed Master .22 S-L-LR, Mod. 510 Target Master .22 cal., Mod. Nylon 66 .22 LR Mohawk Brown NIB, Old .22 cal. Nylon .22 cal. Not listed, Mod. 673 6.5 mm Rem. Mag Very Clean & Fancy, Mod. 700 ADL .270 Win. 200 Yr. Anniversary Satin Walnut NIB, Mod. 700 ADL .300 Win mag. Camo NIB, 3 Mod. 700 BDL .270 cal. Engraved w/Scope .35 Whelen cal. and 25-06 rem cal., Mod. 750 Satin 721 .270 Win cal., Mod. 770 .30-06 cal. w/Scope, Mod 760 Game Master 30-06 Sprg. cal. w/Scope, Mod. 770 .300 Win. mag w/Scope, Mod. 700 .243 Win cal. w/Leupold Scope Very Nice, Mod. 700 in .250 Roberts cal., .7mm rem mag cal. w/Scope, Mod. 700 .22-250rem. Cal. w/Scope and .17 rem cal. w/Scope, Mod. 760 Game Master .308 Win. cal., Mod. 141 Game Master 35 rem. Cal.,

**Remington Shotguns:** Mod. 1100 Sporting 28ga Extra Chokes New in Hard Case, Mod. 1100 Sporting 410ga VR NIB, Mod. 1100 20ga. 2 brl Combo in Hard Case, Mod. 1100 SA Skeet 410ga. VR w/Box, Mod.1100 28ga. VR 1 of matched pair #5088, 2- Mod. 1100 20ga. VR both with Fancy Wood, 9- More Mod. 1100's in .410ga. 28ga. 20ga. 12ga., 26-Mod. 870 Wing Masters Incl. 20ga. VR High Gloss NIB, 12ga. SA Skeet w/Box, 12ga. TC Fancy Wood, 2-12ga. w/Box, .410ga. LW VR, 28ga. LW, 2-16ga., 7-20ga., 11-12ga., Mod. 870 Special Field 12ga. NIB, Mod. 870 Exp. 28ga. VR, Mod. 870's not Listed, Mod. 11-87 Premier 12ga. Super mag., Mod. 11-48 Premier 28ga. In Hard Case, 4-Mod. 11-48 .410ga., Mod. 11-48 12ga.,

**Savages:** Mod. 1895 .303 cal., 6-Mod. 1899 in 250-3000 Sav. Cal., .22 High Power cal., 2 30-30., 2 .303 Sav. Cal., 2 Mod. 99-F .300 Sav. Cal. w/Scope and .303 Win cal. w/Scope, 10 More Mod. 99's .303Old Leather Saddle Case, 250-3000 cal. w/Scope, .33 55 cal., 3 300 cal., 3 30-30 cal., .303 cal., Mod. 1903 .22 S-L-LR cal., Mod. 1914 .22 cal. w/Fold Down Sight, Mod. 111 TR HNT XP 300 Win. mag. w/Scope NIB. Mod. 111 6.5mm cal. w/Scope, Mod. 11 6.5 Creedmor cal. NIB, Mod. 14AC 7mm-08 rem cal. NIB, Mod. 14 W .243 cal. Like New, Mod. Mark 11 .22LR w/Scope, Mod. 24 .22 cal. Over .410ga, Mod. 420 20ga. O/U,

**Browning Rifles & Shotguns** 3-Mod. A-Bolt 11 Hunter .270 Win. cal. NIB, .243 cal. NIB, 7mm rem mag. New, 2-Mod. A-Bolt Medallion .300 WSM cal. & .325 WSM cal. Both NIB, 2- Mod. A-Bolt .270 cal. w/Scopes, Mod. X-Bolt .243 cal. NIB, Mod. BL-22 .22 cal., Belgium made Engraved .22 cal., 2- Citori 12 ga. O/U, 20ga. Mod.? 5x5 Special 2 3/4", 2- Sweet 16 16ga. 2- Mod. 12 28ga. 1 is A Grade-1 only 7,000 made, 2- Light 12 12ga.1 is A Grade-1 is NIB, 2- Magnum 12ga. & 20ga., 2- BPS Field .410ga. NIB and 20ga., BPS Upland Spl. 20ga. NIB, Mod. 42 .410 w/Box, Henry Military Service 2nd Edition Engraved Fancy NIB, Howa Mod. 1500 .270 WCF cal. w/Scope, Revelation Mod. 310A 12ga., Zmromain 7.62 cal., Baikal Mod. 12H-43E-10 5x5 .410ga., Western Field Mod. 550A 12ga., Richfield Mod. 41 .410ga. O/U, New England Partner .410ga., PW Arm Custom Gun 7.62 cal., Hi-Point Mod. 4595 .45 a.c.p. cal., Keystone Arms Cricket .22 cal. 55 brl., Norinco Mod. JW-15 .22 cal. NIB, T/C Mod. Compass .243 NIB, T/C Compass .300 Win. mag. NIB, Mod. 1895 55 .45-70 Govt w/Scope, Mod. 1897 Century Limited NIB, Mod. 1897 Old Take Down, Mod. 97 .22 S-L-LR Oct. Brl, Mod. 93 30-30 cal. Spl. Smokeless brl, Mod. 336 W 30-30 Win cal., Mod. 336 RV 30-30 cal. w/Scope, Mod. 60 .22 LR, Mod. 1894 12ga., Mod. 336 .35 w/Scope, Mossberg Mod. 144 .22 LR, Mod. 500 Crown Grade 12ga. Extra Barrel w/Box, 7-Mod.500 in .410ga & 20ga. 1 20ga. NIB, mod. 835 12ga. Ultra mag. Camo, Rugers 3- Mod. M77 Mark II 500 rem SA Ultra mag. .270 Win. cal. SS brl. NIB, 7mm rem mag. SS w/Scope, Mod. M77 Mark III .7-57 cal., Mod. M77 .220 Swift cal. w/Scope & bipod,

**Auctioneer's Note:** We are Excited to Offer This Outstanding 1 Owner Collection at Auction held in Conjunction with the Air Works Auction. This will be a Separate Auction held in the Old Sale Barn Ring. To see a full listing and pictures go to [www.auctionzip.com](http://www.auctionzip.com). Doors open at 7:00 AM. We will start directly with guns at 9:00 AM. All necessary regulations apply, so please read all terms carefully.

**Auction Terms:** A 5% Buyer's Premium will apply to all sales, an additional 3% to apply on all Credit Card Sales. Sales Tax does apply unless exempt. Must be 18 yrs. of age to buy long guns & 21 yrs. of age to buy handguns. For Ohio residents, no background check paperwork needed. Non-residents must provide proper I-D and regular background check paperwork will apply. Non-residents must provide shipping address of FFL Licensee- Gun Shop in your State or area to have shipped to. Terms of Payments; Cash, Check, Credit Card to be payed on auction day. Guns will be set up for preview Thur. Feb. 14th from 2:00 to 6:00 PM and on Fri. morning from 7:00 to auction time. Shuttle rides available from parking area to auction.

**Auctioneer/Manager:** Nelson Weaver 330-763-4855 Auctioneer ID #32963.

**Assistant Auctioneer:** Daniel Weaver 330-231-8865 Assistant Vern Yoder





# DeWalt, Irwin, Makita & Sioux Tools Auction - NEW Tools!

## DEWALT, SENC0, MILWAUKEE & MAKITA AUCTION



**3 – Sessions of Brand New DeWalt, Milwaukee & Makita Tools:** We will have another very nice line-up of DeWalt cordless power tools to sell including some of the latest and greatest models and tools that DeWalt has to offer with all warranties intact. We will also have lots of new Milwaukee and Makita tools to sell in these sessions as well. \$100,000.00+ worth of new tools **Thur., Feb. 14th 4:00 to 6:00 \*\* Friday, Feb. 15th 6:00 to 8:00 \*\* Sat., Feb 16th 10:00 to 12:00**

## SIoux AUCTION

**250+ New Sioux Air Tools:** Another nice consignment of Sioux Tools including new tools, demos & salesmen's samples, of grinders, sanders, drills, riveters, chisels, impact wrenches, impact drivers, screwdrivers and more. **\*\*Selling Friday, Feb. 15th at 2:00 PM\*\***



**10+ Semi Loads of New Tools:** Including brands like Irwin, Milwaukee, DeWalt, Makita, Snap On, Vise Grip, Diablo, Morse, Norton and others. Includes (all new) vise grips, chalk lines, chalk, C-clamps, vises, levels, socket sets, wrench sets, bar clamps, sand paper, sanding belts, coolers, hole saws, cordless drills, floor jacks, hand saws, hole saws, pliers, helmets, router bits, welding wire, reflective safety coats, drill bits, saw blades, cement blades, caution flags, bandsaw blades and much more. This consignment comes from a Distribution Warehouse Liquidation. We will sell this stuff individually and in bulk lots. Selling all 3 Days. (Dealers and Wholesalers look-in.)

## IRWIN AUCTION





## A Huge Show!

Let our team of professionals help you bring  
your shop to maximum efficiency in 2019!

**Pre-Order for Show Pick up and Save an EXTRA \$100!**



4705 Shaper



SDM Miter Door Clamp

**DOUCET**



SRM Clamp Carrier



SBW 5300H Band Saw  
17", 20" & 24" Models



4016 Table Saw



6310 Edge Sander



Self-Dumping  
Waste and Scrap  
Hoppers  
Multiple Sizes



CS14M/CS18M  
Mechanical Cut-Off Saw



C-1205 Coping Machine



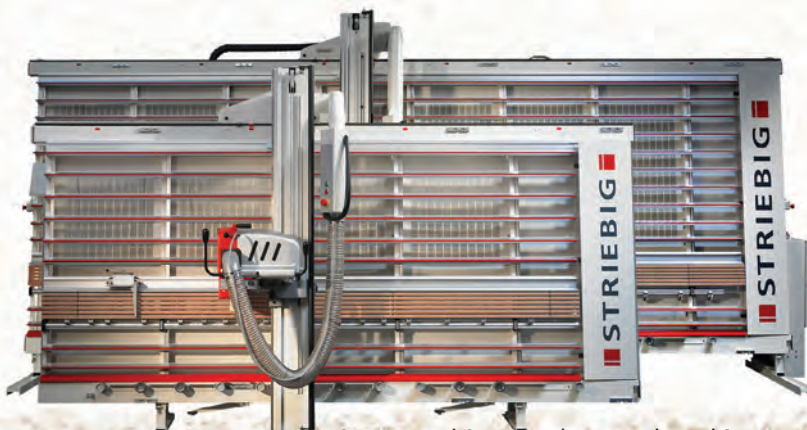
LM 116 Single Spindle  
Lock Miter Machine



TSM 22  
Pocket Hole Cutter



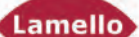
Pneumatic 13 Spindle  
Line Boring Machine



Compact and Compact Plus Vertical Panel Saws



S-1000 Dust Collector  
w/Optional Bin



Zeta P2



Your source for Quality Woodworking Machinery

## See us for Show Specials & Demos!

**Mt. Hope Showcase • Mt. Hope Event Center**

**February 14<sup>th</sup>, 15<sup>th</sup> & 16<sup>th</sup>, 2019**

**Pre-Order for Show Pick up and Save an EXTRA \$100!**

Shear Spiral  
Cutterhead



ST Series Heavy Duty Planer  
20" to 24"



**STONEWOOD**  
Industrial Machinery



Shear Spiral  
Cutterhead

STF Series Heavy Duty Planer  
26" to 30"

Shear Spiral  
Cutterhead



STC Series Heavy Duty Planer  
26" to 30"



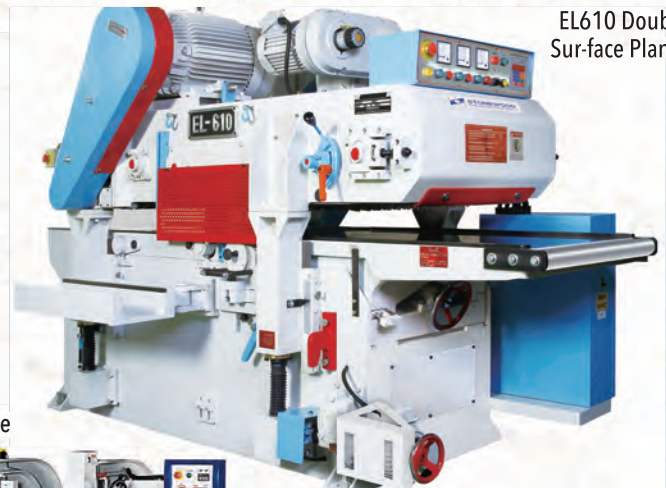
37" Wide Belt Sander



**STONEWOOD**  
Industrial Machinery



GN Series 6-Head Moulder



EL610 Double  
Sur-face Planer

STO-18 Straight Line  
Rip Saw



**STONEWOOD**  
Industrial Machinery

Minimax SC 2C  
Sliding Table Saw



Minimax SC 3C  
Sliding Table Saw



Nova Si 400  
Sliding Table Saw





# RWF Dralion

Dragonsmeade Icon X Patchwork Simply Amazin



Standing at Stud for 2019

Martin & Mary Esther Troyer  
415 East Clark Road  
Wooster, Ohio 44691



\$1,000 Service Fee LFG

Quality Morgan Horses  
330-749-7331  
sangrefarms@gmail.com



# Mister Anson

Reg. #8J468 • Foaled: 5-1-2011 • Reg. #8J468

*Black with chrome and loaded with style and pedigree, MISTER ANSON has a record of 1:53 and earnings of \$249,457.*

Garland Lobell  
Conway Hall  
Amour Angus  
Mister Anson  
Muscles Yankee  
Berry Nice Muscles  
Blackberry Hanover by Donerail



© 2018 FDG, LLC

PHOTOS © 2018 WADE WILCOX

**2019 STUD FEE: \$1,500 due when foal is born, or \$1,250 if paid when mare is bred.**

**Standing at FOUNTAIN NOOK STABLES with  
GEN II EQUINE • Booking: 330-749-7331**





# Call Coalway LLC at 330.857.3096 for More Information!

## SALE

**End of season sale on DS Stoves and Heco cookstoves!**

During the Airworks sale, February 14–16. Cash and carry only.

Call and pre-order today!



**Wood & Coal  
Stoves**

**DS 120 HeatRight**

Heats 2600 sq. ft



**Retail: \$1679**

**Sale: \$1350**

**DS 110 EnergyMax**

Heats 2400 sq. ft



**Retail: \$2514**

**Sale: \$2150**

**DS 160 EnergyMax**

Heats 3500 sq. ft



**Retail: \$2668**

**Sale: \$2295**

**Comfort Max 75**

Heats 1800 sq. ft



**Retail: \$2290**

**Sale: \$1995**

Also available with living room  
sheet metal sides



**Anthra-Max  
Coal Stoves**

**XV14**

Heats 1400 sq. ft



**Retail: \$1940**

**Sale: \$1675**

**XV15 & XV16**

Shown with basement sheet metal



Also available with living room  
sheet metal sides

**XV15**

Heats 2000 sq. ft

**Retail: \$2174**

**Sale: \$1885**

**XV16**

Heats 2500 sq. ft

**Retail: \$2421**

**Sale: \$2115**



**Innovative New  
Cookstoves**



**Heco 420 & 520**

3 top options

- Solid steel
- Polished steel (removable)
- Porcelain (removable)

**Heco 420**

Heats 2000 sq. ft

**Retail: \$3199** (glass doors) **\$3049** (solid doors)

**Sale: \$2875** (glass doors) **\$2745** (solid doors)

**Heco 520**

Heats 2500 sq. ft

**Retail: \$3399** (glass doors) **\$3239** (solid doors)

**Sale: \$3050** (glass doors) **\$2915** (solid doors)

**While supplies last! Call and pre-order today!**

Apple Creek store located 1 mile from Airworks.

See our booth at the showcase during the sale!



**COALWAY**  
HEARTH • CULINARY • OUTDOOR

**APPLE CREEK**  
1181 Dover Road  
Apple Creek, OH 44606  
(330) 857-3096

**CHARM**  
4492 State Route 557  
Millersburg, Ohio 44654  
(330) 893-1005

**To Place an Order...**

**18**

**...Call 330.857.3096**



# Your Local Mt. Hope Vendors!

## MT. HOPE AUCTION SCHEDULE 2019 Sale Dates

### MARCH

- 4-9** Mid Ohio Draft Horse Sale  
**6** No regular Livestock Sale 10:00 AM  
**28-30** Mid Ohio Alternative Animal & Bird Sale

### APRIL

- 16** Easter Lamb Sale 10:00 AM  
**27** Machinery Sale 8:00 AM  
**29** Dairy Sale 5:00 PM

### MAY

- 3, 4** Superior Friesian 8:00 AM  
**17, 18** Swap Meet  
**24** Memorial Trotting Sale 1:00 PM

### JUNE

- 1** Kidney Fund Benefit Sale  
**6** Summer Carriage & Pony Sale  
**7** Summer Draft Horse Sale 7:30 AM  
**15** Machinery Sale 8:00 AM  
**29** Ohio Crippled Children's Fund Auction

### JULY

- 5, 6** Transport For Christ  
**19, 20** Swap Meet  
**26, 27** Rainbow of Hope Benefit Auction  
(330-674-5062)

### AUGUST

- 1-3** Steam & Engine Show  
**13** Mid Ohio Draft Horse Sale  
Consignment Deadline  
Machinery Sale 8:00 AM  
**24** Haiti Benefit Auction  
**30, 31** (330-674-0571)

### SEPTEMBER

- 19-21** Mid Ohio Alternative Animal  
& Bird Sale  
**30** Back to the Farm Feeder Sale  
6:00 PM

### OCTOBER

- 7-12** Mid Ohio Draft Horse Sale  
**9** No regular Livestock Sale 10:00 AM  
**18, 19** Swap Meet  
**21** Back to the Farm Feeder Sale  
6:00 PM  
**28** Fall Dairy Sale 5:00 PM

### NOVEMBER

- 1, 2** Mid Ohio Alternative Animal  
& Bird Sale 8:30 AM

8076 SR 241, Millersburg, OH 44654  
Fax: 330.674.3748

MOUNT HOPE  
AUCTION



330.674.6188 - MtHopeAuction.com

## Thanks for Attending the *Air Works Auction*

Open 6 am Friday & Saturday of Auction  
Open till 8pm



Just across  
the street from  
the Auction

Breakfast  
Lunch & Dinner **BUFFETS**



8101 State Route 241, Mt Hope, OH • 330.674.0922

**Ackerman's**  
— EQUIPMENT & RENTAL —



From hand tools, to large equipment,  
buy or rent, we want to help you get your work  
done, simpler, safer, and more economically.

Visit our brand new store  
just across the road from the Event Center!

**RENTAL  
CENTER**

8051 SR 241 • Mt. Hope, Ohio 44660  
Monday - Friday 7am to 5pm • Saturday 7am -2pm  
**330.674.0495**

11th Annual

## Tri-County Health Expo

Natural Health and Medical Providers All Under One Roof

February 15 & 16, 2019

Friday: 8:00 - 7:00

Saturday: 8:00 - 1:00



NEW LOCATION:

**Heritage Community Center**

between Winesburg and Berlin

3558 US Route 62  
Millersburg, OH 44654

**Over 70 Vendors ~ Seminars both days**



Free shuttle service from the  
Air Works Auction in Mt. Hope  
to the Tri-County Health Exp

Sponsored in part by:



CHARM WELLNESS  
CENTER & RETREAT



# EXPO DEALS

See Page 20 Thru Back Cover

**Order today for pick up at Store on Auction Days**

## AIR WORKS Ltd.

### Power Tool Connection

10680 Dover Road, Apple Creek, OH 44606

Ph 330.698.0388

**Enter to win this compressor at Tool Expo**



### Preorder Benefits

#### Option 1

- Place your Pre-Sale Order today / Min \$150.00
- Pick your order up Air Works Store (Auction Week)
- Receive a Free Lunch Ticket for at the Auction

#### Option 2

- Place your Pre-Sale Order today / Min \$150.00
- Pick your order up at the Auction
- Additional fee applies

#### Option 3

- Place your Pre-Sale Order today
- We can ship UPS Truck Freight USPS
- Shipping Cost added



**Call for a Free  
250-Page  
Catalog**

### PALLET SPECIAL!

**Buy 100 Boxes AW3X131 3" smooth  
nails 2.5m (34") @ \$21/box...**

**Get a FREE MAX SN890CH3 Nailer!**

*(Nails work best in MAX and Senco nailers)*

**Sale Ends February 20th, 2019**



# 30th Air Works Auction Special Deals

## UP TO 30% OFF



5WR	5"	\$9 <sup>95</sup>	<b>SALE \$7<sup>25</sup></b>
7WR	7"	\$11 <sup>95</sup>	<b>SALE \$8<sup>95</sup></b>
10WR	10"	\$12 <sup>95</sup>	<b>SALE \$9<sup>25</sup></b>



Curved Jaw

11R	11"	\$16 <sup>95</sup>	<b>SALE \$12<sup>95</sup></b>
11SP	11"	\$19 <sup>95</sup>	<b>SALE \$13<sup>95</sup></b>



**11-921A** 100 Pk 1992®  
Heavy-Duty Utility Blades  
w/Dispenser  
**\$12<sup>95</sup> SALE \$9<sup>00</sup>**

**STANLEY**



**55-117**  
10 in Precision Molding Bar  
**\$13<sup>95</sup> SALE \$9<sup>75</sup>**



**STANLEY**

**IW38TBP-2Q**  
1/4" Impact Driver  
**\$329<sup>00</sup>**  
**SALE \$249<sup>00</sup>**



**2720-22HD**  
M18 Fuel™ Sawzall®  
Reciprocating Saw  
High Demand™ Kit  
**\$549<sup>00</sup> SALE \$385<sup>00</sup>**



**MSA 10059484**

Ear Plugs  
100 pc. tub  
**\$29<sup>95</sup> SALE \$20<sup>00</sup>**



**XDT11Z**  
18V LXT® Lithium-Ion  
Cordless Impact Driver  
**\$129<sup>00</sup> SALE \$90<sup>00</sup>**



**MK103**  
3 HP Compressor  
**SALE \$129<sup>00</sup>**  
• 8.7 CFM @ 175 PSI  
• 1-year warranty



**IRC 061201**  
Coupler  
**\$18<sup>95</sup> SALE \$15<sup>00</sup>**



**SLP20XP**  
1-5/8" 18 Ga.  
Brad Nailer  
**\$149<sup>00</sup>**  
**SALE \$119<sup>00</sup>**



**4AM-FRV-13H**  
**\$165<sup>95</sup> SALE \$129<sup>00</sup>**

**GAST**

Designed to thrive in harsher environments. Their lubrication protects internal components and helps carry away smaller particulate, which can evade filtration, while also providing heat dissipation benefits.



**33-730**  
30' FATMAX® Tape Rule  
**\$22<sup>95</sup> SALE \$16<sup>00</sup>**



**R722**  
Radiator Specialty  
22" Rubber Strap  
**\$3<sup>50</sup> SALE \$2<sup>65</sup>**



**R731**  
Radiator Specialty  
31" Rubber Strap  
**\$4<sup>00</sup> SALE \$2<sup>95</sup>**

**HP314**  
1132 Lumen Light  
**\$189<sup>00</sup> SALE \$159<sup>00</sup>**



**Sale Ends February 20th, 2019**



# 30th Air Works Auction = Up to 30% OFF

**DCS388B**  
FLEXVOLT® 60V MAX\* Brushless  
Reciprocating Saw  
Was \$199<sup>00</sup>



**DCS575B**  
FLEXVOLT® 60V MAX\*  
7-1/4 in. Circular Saw  
w/Brake  
Was \$199<sup>00</sup>



**DCG414B**  
FLEXVOLT® 60V MAX\*  
GRINDER  
Was \$199<sup>00</sup>



**DCBL770B**  
FLEXVOLT® 60V MAX\*  
Handheld Blower  
Was \$199<sup>00</sup>



**DCST970B**  
FLEXVOLT® 60V  
MAX\* Cordless  
String Trimmer  
Was \$199<sup>00</sup>



**DCCS670B**  
FLEXVOLT® 60V  
MAX\* Cordless  
Chainsaw  
Was \$249<sup>00</sup>



**DCG414T2**  
FLEXVOLT® 60V MAX\*  
Grinder 2 Battery Kit  
Was \$399<sup>00</sup>



**DCK299P2**  
20V MAX\* XR® Lithium Ion  
Brushless Premium  
Hammerdrill & Impact  
Driver Combo Kit  
(5.0Ah)  
Was \$399<sup>00</sup>



**DCS575T2**  
FLEXVOLT® 60V MAX\* 7-1/4 IN. (184 mm)  
Circular Saw w/Brake Kit  
Was \$399<sup>00</sup>



**DCS388T2**  
FLEXVOLT® 60V MAX\*  
Brushless  
Reciprocating Saw  
2 Battery Kit  
Was \$399<sup>00</sup>



**DCCS670X1**  
FLEXVOLT® 60V MAX\* Brushless  
Chainsaw Kit  
Was \$399<sup>00</sup>



Don't miss out on these  
**GREAT DEALS**

Reserve your items today 330.698.0388

**DCK494P2**  
20V MAX\* XR Brushless 4 Tool Combo Kit  
Was \$659<sup>00</sup>



Includes: (1) DCD996, (1) DCF887, (1) DCS367, (1) DCL040, (2) DCB205, (1) DCB115, and (1) contractor bag

**DCK695P2**  
20V MAX XR 5.0 Ah Cordless Lithium Ion  
Brushless 6-Tool Combo Kit  
Was \$899<sup>00</sup>



Includes: DCD996B 20V MAX 3-speed hammer drill; DCF887B 20V MAX 1/4 in. 3-speed impact driver; DCS570B 20V MAX 7-1/4 in. circular saw; DCS367 20V MAX compact reciprocating saw; DCG413B 20V MAX 4.5 in. angle grinder; DCL040 20V MAX LED work light; and accessories.



# Call for Discounted Price

**DCS380B**  
20V MAX Cordless  
Reciprocating Saw  
Was \$119<sup>00</sup>



**DCS391B**  
20V MAX 6-1/2"  
Circular Saw  
Was \$119<sup>00</sup>



**DCG412B** 20V MAX  
Lithium Ion 4-1/2" / 5"  
Grinder  
Was \$119<sup>00</sup>



**DCF887B**  
20V MAX XR 1/4"  
3-Speed Impact  
Driver  
Was \$129<sup>00</sup>



**DCS355B**  
20V MAX XR Cord-  
less Oscillating  
Multi-Tool  
Was \$129<sup>00</sup>



**DCF620B**  
20V MAX XR Li-Ion  
Brushless Drywall  
Screwgun  
Was \$129<sup>00</sup>



**DCS551B**  
20V Cut-Out Tool  
Was \$119<sup>00</sup>



**DCD740B**  
20V Angle Drill  
Was \$119<sup>00</sup>



**DCV581B**  
18/20V MAX Cord-  
less/Corded Wet-Dry  
Vacuum  
Was \$119<sup>00</sup>



**DCD991B**  
20V Brushless Drill  
Was \$129<sup>00</sup>



**DCF883B**  
20V 3/8" Impact  
Wrench  
Was \$129<sup>00</sup>



**DCS387B** 20V  
Compact Recip Saw  
Was \$129<sup>00</sup>



**DCF880B**  
20V MAX 1/2" Impact  
Wrench  
Was \$119<sup>00</sup>



**DCE100B**  
20V MAX Compact  
Jobsite Blower  
Was \$119<sup>00</sup>



**DCE511B**  
11 In. Corded/Cordless  
Jobsite Fan  
Was \$119<sup>00</sup>



**DCBL720B** 20V  
MAX Lithium Ion XR  
Brushless Handheld  
Blower  
Was \$149<sup>00</sup>



**DCST920B** 20V  
MAX Lithium Ion XR  
Brushless 13" String  
Trimmer  
Was \$149<sup>00</sup>



**DCHT820B**  
20V Hedge Trimmer  
Was \$149<sup>00</sup>



**DCCS620B**  
20V MAX\* XR®  
Compact 12 In.  
Cordless Chainsaw  
Was \$149<sup>00</sup>



**DCG413B**  
4.5 In. 20V MAX  
XR® Angle Grinder  
Was \$159<sup>00</sup>



**DCD996B**  
20V Brushless  
Hammerdrill  
Was \$149<sup>00</sup>



**DCS331B**  
20V Jig Saw  
Was \$149<sup>00</sup>



**DCGG571B**  
20V Grease Gun  
Was \$179<sup>00</sup>



**DCG426B**  
20V MAX 1-1/2 In.  
Variable Speed Cord-  
less Die Grinder  
Was \$179<sup>00</sup>



**DCS367B**  
20V MAX XR®  
Brushless Compact  
Reciprocating Saw  
Was \$159<sup>00</sup>



**DCS570B** 20 Volt  
Brushless Circular Saw  
Was \$159<sup>00</sup>



**DCH133B**  
20V MAX XR Brushless  
1" D-Handle Rotary  
Hammer  
Was \$179<sup>00</sup>



**DCP580B** 20V Planer  
Was \$179<sup>00</sup>



**DCF890B**  
20V MAX XR 3/8"  
Compact Impact  
Wrench  
Was \$179<sup>00</sup>



**DCE560B**  
20V MAX 100Z /  
300ML Adhesive Gun  
Was \$219<sup>00</sup>



**DCF894HB**  
20V MAX XR® 1/2 In.  
Mid-Range Cordless  
Impact Wrench w/ Hog  
Ring Anvil  
Was \$199<sup>00</sup>



**DCF899HB**  
20V MAX XR® High  
Torque 1/2" Impact  
Wrench w/Hog Ring  
Anvil  
Was \$229<sup>00</sup>



**PLACE YOUR ORDER NOW**

**This may never  
happen again!**



# Milwaukee M18 Fuel Super Saver

## M18 FUEL

**48-11-1820**

M18™ Red-Lithium™ CP2.0  
Battery  
Was \$79<sup>00</sup>



## M18 FUEL

**48-11-1865**

M-18 Red-Lithium  
6ah  
Was \$149<sup>00</sup>



## M18 FUEL

**48-11-1890**

Red-Lithium 9ah  
Battery Pack  
Was \$199<sup>00</sup>  
9 amp hr...longer run  
time for all Milwaukee  
M18 tools



## M18 FUEL

**48-59-1812**

Charger  
Was \$59<sup>00</sup>



**2733-21**

M18 Dual Bevel Sliding Compound  
Miter Saw Combo Kit  
Was \$549<sup>00</sup>



Includes: 2733-20 M18 FUEL™ 7-1/4" dual bevel  
sliding compound miter saw; 8-11-1850 M18™  
REDLITHIUM™ XC5.0 ext. cap. battery pack;  
48-59-1812 M18™ & M12™ multi-voltage charger;  
and accessories.

## M18 FUEL

**2753-20**

1/4" Hex Impact Driver  
Was \$119<sup>00</sup>



## M18 FUEL

**2704-20**

1/2" Hammer Drill/  
Driver  
Was \$129<sup>00</sup>



## M18 FUEL

**2997-22**

2-Tool  
Combo  
Kit  
Was  
\$399<sup>00</sup>



Includes: 1/2" Hammer Drill (2804-20), 1/4" Hex  
Impact Driver (2853-20), (2) 5ah Battery Packs, Multi-  
Voltage Charger (48-59-1812) and Carrying Case.



## M18 FUEL

**48-11-1812**

12ah Battery Pack  
Was \$249<sup>00</sup>  
12 amp hr run time...  
longest run time for all 150+  
Milwaukee M18 tools

**NEW!**



## M18 FUEL

**2736-21HD**

8-1/4" Table Saw Kit  
Was \$569<sup>00</sup>



## M18 FUEL

**2727-21HD**

16" Chainsaw Kit  
Was \$449<sup>00</sup>

- More power than 40 cc gas
- Cut up to 150 6x6 per charge
- Capable of the most demanding chainsaw applications

Includes: 16" Oregon Bar and Chain, 12 amp hr Battery Pack (48-11-1812),  
and Rapid Charger (48-59-1808).



## M18 FUEL

**2997-23PO**

M18 FUEL™ 3 Tool Combo Kit  
Was \$599<sup>00</sup>

Includes: (1) M18 FUEL 1/2" Hammer Drill  
(2804-20), (1) M18 FUEL 1/4" Hex Impact  
Driver (2853-20), (1) M18 FUEL Hackzall  
(2719-20), (1) M18 REDLITHIUM XC5.0  
Battery (48-11-1850), (1) M18 REDLITHIUM  
XC6.0 Battery (48-11-1865), (1) PackOUT Large Tool Box (48-22-8425), (1) M18 & M12  
Multi-Voltage Charger, (1) Side Handle, (2) Belt Clip, (2) Bit Holder



## M18 FUEL

**2732-21HD**

7-1/4" Circular Saw Kit  
Was \$449<sup>00</sup>

- More power than corded saws
- Cut up to 750 2x4s per charge

Includes: 12 amp hr Battery Pack  
(48-11-1812), Rapid Charger  
(48-59-1808), Blade, Blade Wrench,  
and Contractor Bag.



## M18 FUEL

**2722-21HD**

Super Sawzall Kit  
Was \$449<sup>00</sup>

- Faster than 15 amp corded
- Up to 150 cuts per charge

Includes: 12 amp hr Battery Pack (48-11-1812), Rapid Charger  
(48-59-1808), and Contractor Bag.





# Super Saver at Air Works/Tool Showcase

## XT275PT Combo Kit \$429<sup>00</sup>

Includes: 18V LXT® Compact Brushless 1/2" Hammer Driver-Drill (XPH12Z); 18V LXT® Brushless 3-Speed Impact Driver (XDT14Z); (2) 18V LXT® Lithium-Ion 5.0Ah Battery (BL1850B); 18V LXT® Lithium-Ion Dual Port Charger (DC18RD); and Tool Bag



**Makita**

**Buy the Above Combo Kit, Get One Bare Tool FREE!**  
**XMT03Z Multi-Tool, XDT11Z Impactor, or XPH072 Hammerdrill**

## XLC02RB1W 18V LXT® Lithium-Ion Compact Cordless Vacuum Kit (2.0Ah)

**\$99<sup>00</sup>/Save \$40<sup>00</sup>**



**Makita**

The Makita 18V Compact Lithium-Ion Cordless Vacuum is a compact and powerful solution for fast and efficient cleaning. At only 18-3/4" in length this compact vacuum can be used as a "hand-vac", or with the floor nozzle extension for floors, carpets, and hard-to-reach spaces. The kit includes the fast-charging 18V Compact Lithium-Ion battery and efficient Rapid Optimum Charger.

## 5007F 7-1/4" Circular Saw

**\$99<sup>00</sup>/Save \$20<sup>00</sup>**

**Makita**



Makita engineered the 7-1/4" Circular Saw with pro framers in mind, combining power and performance with ease-of-use features, superior balance, and job site durability. The 5007F is ideal for a range of framing and cutting applications.

## JR3070CT 15 AMP AVT® Recipro Saw Kit

**\$189<sup>00</sup>/Save \$40<sup>00</sup>**



**Makita**

Offers 2X less vibration with innovative counterbalance and clutch system. A powerful 15 AMP motor with electronic speed control maintains constant speed under load. Variable speed dial with 6 settings and orbital cutting for faster cutting. Unique clutch assembly helps protect the gears should the blade bind. Includes blades and metal tool case.

**Look for Expo Only Special Deals when you come to the Mt. Hope Showcase!**

**Makita**

## 18V/36V Makita Bare Tool Sale!



**XSH01Z** 18V X2 LXT® Lithium-Ion (36V) Cordless 7-1/4" Circular Saw  
Price: **\$219<sup>00</sup>**

**Makita**



**XAG12Z1** 18V X2 LXT® Lithium-Ion (36V) Brushless Cordless 7" Paddle Switch Cut-Off/Angle Grinder, with Electric Brake  
Price: **\$219<sup>00</sup>**

**Makita**

**Makita**



**XRJ06Z** 18V X2 LXT® Lithium-Ion (36V) Brushless Cordless Reciprocating Saw  
Price: **\$219<sup>00</sup>**



**XBU02Z** 18V X2 (36V) LXT® Lithium-Ion Brushless Cordless Blower  
Price: **\$219<sup>00</sup>**

**Makita**



**XCU03Z** 18V X2 (36V) LXT® Lithium-Ion Brushless Cordless 14" Chain Saw  
Price: **\$279<sup>00</sup>**

**Makita**

**Buy Your Favorite Bare Tool,  
Get (2) Batteries FREE!**



**BL1850B** 5 Ah Twin 18V Battery Power

**NOW ONLY  
\$139<sup>00</sup>**



# Light up the Cold Winter at Air Works!

**AW6406**  
20V 10 Watt  
Dewalt Homeowner  
**\$105<sup>95</sup>/**  
**Sale \$89<sup>00</sup>**

Shade not included.  
Add \$10<sup>00</sup> for shade.



**AW6408**  
20V 10 Watt  
Dewalt Homeowner  
w/ Dimmer  
**\$115<sup>00</sup>/**  
**Sale \$99<sup>00</sup>**

**Power Buddy**  
**PB-DEW-5A**  
Dewalt  
**PB-MAK-5A**  
Makita  
**PB-MIL-5A**  
Milwaukee  
**\$52<sup>95</sup>/Sale \$45<sup>00</sup>**



(Battery not included)

**AW6412** 18V  
10 Watt Makita  
Homeowner  
**\$105<sup>95</sup>/**  
**Sale \$79<sup>00</sup>**

Shade not included.  
Add \$10<sup>00</sup> for shade.



**AW6414**  
18V 10 Watt  
Makita Homeowner  
w/ Dimmer  
**\$115<sup>00</sup>/**  
**Sale \$89<sup>00</sup>**

**HL5** 6-Chip LED Head Lamp  
**\$18<sup>95</sup>/Sale \$13<sup>50</sup>**



- 175 lumen output;
- 3 hour 45 min runtime
- 183 ft beam distance
- Impact and water resistant
- 4.4 oz. (including batteries)



**PWL2140TS** 40W 100V  
Tri-pod Light  
**\$89<sup>95</sup>/Sale \$79<sup>00</sup>**

- 4,000 lumens, long lasting super-bright LEDs
- Extends up to 65" tall, tilts up to 30° down, 90° up
- Indoor/outdoor approved



**AW6418**  
18V 10 Watt  
Milwaukee Homeowner  
**\$119<sup>00</sup>/**  
**Sale \$99<sup>00</sup>**

Shade not included.  
Add \$10<sup>00</sup> for shade.



**AW6420**  
18V 10 Watt  
Milwaukee Homeowner  
w/ Dimmer  
**\$129<sup>00</sup>/**  
**Sale \$109<sup>00</sup>**

**A9R** Rechargeable LED Penlight  
**\$31<sup>95</sup>/Sale \$28<sup>00</sup>**



- Inspection beam
- Lithium polymer battery included
- Pro-flex charging cap
- Charge with AC, DC, or USB; All adapters included
- 4"L x 0.370" Dia., Wt. 2.1 oz



LED Corn Bulbs Natural White Light

**AW6502** 10 Watts DC  
**\$22<sup>95</sup>/Sale \$18<sup>00</sup>**

AW6502



**AW6504** 10 Watts  
DC w/Dimmer  
**\$26<sup>95</sup>/Sale \$22<sup>00</sup>**  
**AW CORN BULBS**

AW6504



**DCL070T1** Stackable  
Corded/Cordless LED Area  
Light Kit **FLEXVOLT**  
**\$499<sup>99</sup>/Sale \$399<sup>00</sup>**

Includes: DCL070 LED area light, (1) DCB606 60V MAX FLEXVOLT™ 6.0 AH battery and fast charger



**2120-20** M18™ Rocket  
Dual Pack Tower Light  
w/One Key  
**\$599<sup>00</sup>/Sale \$499<sup>00</sup>**



**DCB204** 20V MAX  
PREMIUM XR®  
4.0AH Lithium Ion  
Battery Pack  
**Sale \$129<sup>00</sup>**



**DCB205** 20V MAX\*  
PREMIUM XR® 5.0AH  
Lithium Ion Battery  
Pack  
**Sale \$139<sup>00</sup>**



**Buy 1, Get Something FREE!**

**48-11-1865** M18 REDLITHIUM™ HIGH  
OUTPUT™ XC6.0 Battery Pack  
**Sale \$189<sup>00</sup>**



**Buy 1, Get 1 FREE!**

**BL1850B** 18V LXT® Lithium-Ion 5.0Ah  
Battery  
**Sale \$149<sup>00</sup>**



**Buy 1, Get 1 FREE!**

**DCB115** 12V MAX  
- 20V MAX Lithium  
Ion Battery Charger  
**Sale \$79<sup>00</sup>**



**DCB118** 20V MAX\*  
Fan Cooled Fast  
Charger  
**Sale \$99<sup>00</sup>**



**DCB104** Multiport  
Simultaneous Fast  
Charger  
**Sale \$219<sup>00</sup>**



**DCB119** 12V MAX  
- 20V MAX Lith. Ion  
Vehicle Batt. Charger  
**Sale \$129<sup>00</sup>**



**Buy Any Above Charger, Get Something FREE!**

**48-59-1812** M18™  
& M12 Multi-Voltage  
Charger  
**Sale \$119<sup>00</sup>**



**Buy 1, Get a  
6Ah Battery FREE!**

**DC18RD** 18V LXT®  
Lith-Ion Dual Port  
Rapid Opt. Charger  
**Sale \$99<sup>00</sup>**



**Buy 1, Get a  
5Ah Battery FREE!**



## Construction Master Miter Saw Table

**AW2012 12'** Aluminum Miter Saw Table with 10'-2" Cut Capacity **\$749<sup>00</sup>**

**AW2016 16'** Aluminum Miter Saw Table with 12'-2" Cut Capacity **\$949<sup>00</sup>**

Light-weight aluminum construction is rugged, durable and economical. Quick detach saw mount for transporting. 4' sliding support arm with roller. Super Stop and Rail System for accurate, dependable service in heavy construction.



*All miter saw tables are custom built. Please specify what model of saw you have and whether you need fence on the right or left side of the saw. Saw can also be a center mount with fence on both right and left sides.*

**AIR WORKS Ltd.**  
★ ★ ★ ★ ★ ★ ★ ★ ★ ★ ★ ★ ★ ★ ★ ★

**\$150 OFF on miter saw table when you buy any of the miter saws below**

### DeWalt Miter Saws

**DWS780 \$599<sup>00</sup>**

**DWS780WA \$1059<sup>00</sup>**

**DWS7800X \$1139<sup>00</sup>**



- 12" Double bevel compound miter saw
- 10 Positive stops deliver repeatable accuracy
- Tall sliding fence supports crown molding
- Precise miter system and machined fence



### DeWalt Miter Saws

**DWS780G \$1389<sup>00</sup>**



- Gas Powered 12" Miter Saw
- Two stroke high speed master



### Gas Miter Saw Combo w/Rolling Stand

**Price \$1,499<sup>00</sup>/ SAVE \$130<sup>00</sup>**

### 8200NB

22-Pocket Premier Framer

**\$109<sup>00</sup>/ SAVE \$20<sup>00</sup>**

- 7 main pockets
- Tri-layer 1000 denier nylon
- Fully adjustable Brahma Webb belt
- Fits waist sizes 30"-48"



**Accu-ride**  
The Original Work Wear

Accu-ride Workwear is locally made with 1000 denier ballistic nylon fabric. Tri-layered with an inner layer for stability and durability. Premier and 3-tier pouches have extra corner wear protection. Stainless steel rivets. All pouches have polypropylene binding for extra wear protection. Belts have double tongue roller buckle. All combo units come with a 30"-48" belt.

### 8205NB

22-pocket Summit Framer

**\$129<sup>00</sup>**

- 7 main pockets
- 3-tier pouch
- Tri-layer 1000 denier nylon
- Fully adjustable Brahma Webb belt



**Accu-ride**  
The Original Work Wear

### 12" Dual Bevel Glide Miter Saws

**GCM12SD**

**\$759<sup>00</sup>**

**GCM12SDOX (Ox motor) \$1269<sup>00</sup>**

- Axial-Glide™ System durable precision
- Expanded cutting capacity
- Upfront bevel controls
- SquareLock™ quick-release fences
- Integrated expanding base extensions
- Large easy-to-read uniform bevel & stainless steel miter scales
- Adjustable miter detents
- Push-button miter detent override
- Bevel detents



**Made in USA**

**Accu-ride**

The Original Work Wear

**8210NB 9-pocket Premier Pouch \$59<sup>00</sup>**

- 5 main pockets
- 1-zippered pocket
- Nail puller slot
- Tri-layer 1000 denier nylon



**8215NB 10-pocket Summit Pouch \$59<sup>00</sup>**

- 4 main pockets / 3-tier pouch
- Zippered pouch
- Speed square slot
- Nail puller slot
- Tri-layer 1000 denier nylon



**8220NB 14-pocket Premier Pouch \$59<sup>00</sup>**

- 3 main pockets
- Speed square holder
- Tape holder
- Tri-layer 1000 denier nylon



**AIR WORKS Ltd.**  
★ ★ ★ ★ ★ ★ ★ ★ ★ ★ ★ ★ ★ ★ ★ ★



# All the Tools you Need for a Job Well Done!

## 4065 Advanced Construction Math Calculator \$59<sup>95</sup>



An award-winning advanced feet-inch-fraction construction-math calculator with powerful built-in solutions perfect for completing layouts, plans, bids and estimates. Calculate circles, roofs stairs, and more. Works in/converts between feet-inches-fractions and decimals, including metric.



## 48-32-4006 40-Piece Shockwave™ Drill & Drive Set \$17<sup>00</sup>



## 00760 American Level Pro 100' Chalk Line \$10<sup>00</sup>

Braided poly/cotton line. Good old stand-by, this chalk line will last you for years. The Roofers Choice!



## 15oz MIG Weld Framing Hammer

DWHT51145 Smooth \$44<sup>95</sup>

DWHT51138 Milled \$44<sup>95</sup>

- 15oz weight for faster swing and minimized fatigue
- All steel design for durability and long life
- Magnetic nail starter for easy one-handed nail placement
- Vibration absorbing grip minimizes damaging vibrations and fatigue



## CNV-100SP Convoy™ Super 100 Caulk Gun, 1/10 gallon \$18<sup>95</sup>

- 1/10 gallon gun with a powerful twin-thrust dispensing system
- Extra-long 10-1/2" barrel and 360° rotating handle for maneuvering in tight spaces
- Extra-long seal puncture tool and auto flow stop to control material seepage and oozing
- Special hardened steel shaft & thrust plates for consistent, non-slip performance
- Rugged steel welded construction, strong cast aluminum handle
- Ladder hook and eyelet to attach to a safety strap

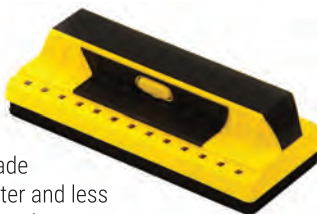


**Tajima**

## 710 ProSensor Stud Finder \$39<sup>95</sup>



The ProSensor 710 is a professional-grade stud detector that is more accurate, faster and less error prone than other products on the market. The ProSensor 710 senses the wall in thirteen locations simultaneously, then immediately illuminates the display elements that are in front of a stud.



## CR301JF Chalk-Rite™ Jam Free Fast Wind Chalk Line \$15<sup>95</sup>

- Fast-wind chalk snap-line with 100' of extra bold 1.0 mm premium grade braided line
- Smooth 5-gear rewinds, up to 4 times faster than standard snaplines.
- Compact, fits comfortably in the palm of your hand, holds up to 3.5 oz. of chalk
- Durable, translucent ABS case with protective, sure-grip elastomer cover
- Positive gear-lock line hold, automatically releases during rewind



**Tajima**

## 832532

Multi-Tool Wave

\$65<sup>00</sup> **SAVE \$12<sup>50</sup>**



The most popular full-size Leatherman. Comes with a durable leather sheath. Features: needle-nose pliers, regular pliers, wire cutters, hard-wire cutters, clip-point knife, serrated knife, saw scissors, wood-metal file, diamond-coated file, large bit driver, small bit driver, large screwdriver, ruler, bottle/can opener, wire stripper, lanyard attachment, (2) double-ended bits with screw bits, Phillips and flat tip eyeglass screwdriver, Phillips #1 & #2 3/16 screwdriver.



## Tibone 15 oz. 18" Straight TI HDL

TB15MS Milled \$189<sup>00</sup>

TB15SS Smooth \$189<sup>00</sup>

- 15 oz. titanium head/steel face combination drives like a 28-oz. steel hammer
- 17-1/2" super-strong titanium handle with an ergonomically contoured, hard-wearing straight black rubber grip
- Patented side nail puller eases 16p nails out with one 180° motion & Stiletto's signature magnetic nail starter



## TRIMBAR5 8-1/2" Titanium "Trimbar" Finish/ Trim Puller \$69<sup>95</sup>/SAVE \$10<sup>00</sup>

Our trim and finish nail puller. An extremely lightweight yet strong little trim bar.

- 6.2 Oz solid Titanium bar with lightweight open truss design/
- Japanese style trim puller- wide tip for easy trim removal



## 11228BH B.A.S.H. 6.5" Utility Vise

\$139<sup>00</sup> **SAVE \$20<sup>00</sup>**

**Plus get a FREE Hammer!**



## 48-22-3980 100' Bold Line Chalk Reel \$8<sup>50</sup>

- Rubber overmold
- StripGuard™ clutch
- Planetary gear system
- 6:1 Gear retraction ration
- Flush handle storage



## 48-22-3990 100' Precision Line Chalk Reel \$10<sup>50</sup>

- All metal body
- StripGuard™ clutch
- Planetary gear system
- 6:1 Gear retraction ration
- Low spillage line





# Check out our Woodworking Selection at the Expo!

## Dynabrade Random Orbital Sanders Setting the standard for random supremacy!

- Supreme I Heavy Weight
- Silver I Medium Weight
- Spirit I Light Weight



Type	Item	Size	RPM	Price
Supreme	56815	3/16"	12,000	\$159 <sup>00</sup>
Supreme	56850	3/32"	12,000	\$159 <sup>00</sup>
Spirit	59020	3/16"	12,000	\$149 <sup>00</sup>
Spirit	59032	3/32"	12,000	\$149 <sup>00</sup>
Silver	69020	3/16"	12,000	\$149 <sup>00</sup>
Silver	69035	3/32"	12,000	\$149 <sup>00</sup>

Supreme



Spirit



Silver



## Dynabrade 5" Sanders \$150<sup>00</sup>/SAVE \$39<sup>00</sup>

- Best in Class
- Recessed throttle lever
- Comfort grip
- Made in USA



**SAVE  
\$39<sup>00</sup>**



**X51 3/16" PSA**  
**X51H 3/16" Hook-Face**  
**X52 3/32" PSA**  
**X52H 3/32" Hook-Face**

## Positive Clutch Pistol Grip Screwdriver Drills

### SSD10P20PS

- 2,000 RPM
- 1.5 hp



**SALE PRICE  
\$285<sup>00</sup>**



### 1410R

- 2,000 RPM
- 1 hp
- 1/4" Drill



**SALE PRICE  
\$309<sup>00</sup>**



## Rapid Reverse Drills and Screwdrivers

### SSD10P20SRR

- Stall Drive



**SALE PRICE  
\$279<sup>00</sup>**



### Sioux 5" Sanders \$129<sup>00</sup>

**R02512-50 SNP 3/16" PSA**  
**R02512-50 FNP 3/32" PSA**  
**R02512-SNH 3/16" Velcro**  
**R02512-FNH 3/32" Velcro**



**10% OFF!**

(Any Sioux tool not already on sale)



### SDR10P20R3RR

- 2,000 RPM 3/8"



**SALE PRICE  
\$279<sup>00</sup>**



### MVM-A1 \$309<sup>00</sup>



- Approximately 1 HP motor, 22,000 RPM, 22 CFM
- 5" Base, 1/4" collet, approximately 3 lbs.
- With cam lock and comfort grip
- Simple and precise depth control
- Smooth sliding, ultra flat sub bases



### MVM-O \$129<sup>00</sup>



- Motor rating 0.6 HP,
- 22,000 rpm, 20 cfm
- 5" base, 1/4" collet, 2.25 lbs.
- With cam lock and comfort grip
- Simple and precise depth control
- Smooth sliding, ultra flat sub bases



### MVM-Sioux \$269<sup>00</sup>



- 0.7 HP Sioux motor, approximately 23,00 RPM, 26 CFM, bottom exhaust, made in America
- 5" base, 1/4" collet, approx. 2.41bs.
- With cam lock and comfort grip
- Simple and precise depth control
- Smooth sliding, ultra flat sub bases



### WC-2082 Woodchopper Router \$139<sup>00</sup>

Compact and lightweight but hefty enough for the medium duty job. Spiral depth adjustment has 1/3 2" index. Fast and accurate setup. Designed for the professional craftsman. 1/2 HP motor. Adapts to Porter Cable template guide. 1/4" collet chuck.



### WC-1954 Woodchopper \$269<sup>00</sup>

This hefty router is identical to the WC-2082 except with a 3/4 HP heavy duty motor designed for a long life. Sioux motor. 1/4" collet chuck.



### W911 High Powered Air Router \$839<sup>00</sup>

Hardened steel parts give The Ox as longer life with less wear. Higher air flow inlet valve gives you power so you can work faster. The Full Flow exhaust doesn't block up. Made with engineered components for durable use. Assembled in USA with American made parts. Our heavy duty router is designed for production jobs requiring a fast and powerful router. Great for manufacturing and industrial applications. A must for shed shop to cut out windows. Includes manual, wrenches and 1/2" collet.





# Thousands of Air Components in Stock!

## AW COMPRESSORS

### MK113H5-9P | Price: \$899<sup>00</sup>

- Single stage / 5.5 HP Honda
- 9-gallon tank
- Weighs 175 lbs.
- 10.2 cfm @ 125 psi



After 25 years in the compressor business, we have teamed up with Rol-Air and FINI to bring you a very fine portable compressor!

#### Standard Features:

- Aluminum splash lubricated pump w/cast iron cylinder
- Oversized flywheel for real efficient cooling
- Easy belt adjustment system
- Lots (110-130 psi) of delivered air for its size...easy to handle!
- Automatic idle down
- 1-year warranty

### MK113H8-9P | Price: \$1,199<sup>00</sup>

- Single stage / 8 HP Honda
- 9-gallon tank
- Weighs 225 lbs.
- 14.5 cfm @ 125 psi



### BK119H8-9P | Price: \$1,499<sup>00</sup>

- Two stage / 8 HP Honda
- 9-gallon tank
- Weighs 290 lbs.
- 22 cfm @ 125 psi
- Vibration balance gear on crank



**SEE THIS COMPRESSOR  
in Action at the Mt. Hope Showcase**

### GX 2-7 EP COMPACT & ECONOMICAL

- Compared to piston compressors, the GX offers reduced energy consumption and high efficiency.
- The rotary screw technology minimizes vibrations for silent operation at the lowest initial investment.



*Atlas Copco*



### GX 7-11 EL INDUSTRY-LEADING PERFORMANCE

- Thanks to load/no load control, the compressor controller switches automatically to the optimum control mode for high, low and intermittent air consumption.
- Best-in-class performance, total reliability and low power consumption.



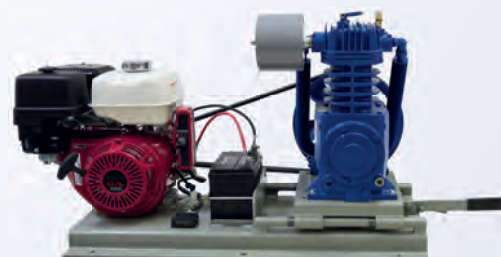
**251CS80VCB 5 HP  
EXPO \$2,199<sup>00</sup>**

**271C80VCBM  
7½ HP Package Unit  
\$2,649<sup>00</sup>  
SAVE \$200<sup>00</sup>**

### COOLER, CLEANER, LONGER-LASTING

Engineered for lasting performance plus quick and easy maintenance. In fact, the heavy-duty, disc-type valves are BOTH efficient and accessible without having to remove the cylinder head, unhooking the discharge lines, unbolting the inter-coolers, or any other typical valve maintenance procedures!

**QTS PUMP PACKAGE \$1,059<sup>00</sup>  
\$2,199<sup>00</sup>**



**AIR WORKS Ltd.**  
\*\*\*\*\*



# It's Time to Get "Seirus" About Cold Weather Gear!

## 8011 Seirus Xtreme™ All Weather™ Glove

**\$32<sup>95</sup> SAVE \$10<sup>00</sup>**

(Specify Size: S - M - L - XL)

FORM FIT. XTREME WARMTH. 100% WATERPROOF. The Original Xtreme Glove. Warmest, driest, most comfortable lightweight glove. As warm as bulky, 200gm gloves.

- INSERT: XTREME Pro-Fit Form-fitting windproof waterproof breathable
- SHELL: Spacer Knit
- PALM: SoftGrip™
- FEATURES: Form-Fitting next to skin fit. 4-way stretch. Fleece-lined. Stretch cuff.

**SEIRUS**



## 8134 Seirus Heatwave™ Glove Liner

**\$15<sup>95</sup>**

- Use with the above gloves for ultimate warmth
- Cut and sewn, form fitting construction
- 4-way stretch
- Wear as liner, or lightweight glove

**SEIRUS** **HEATWAVE**



## 8114 Seirus Heatwave™ Accel

**\$29<sup>95</sup> SAVE \$5<sup>00</sup>**

Large & X-Large

- 250g HeatLock™ premium hollow-core insulation
- INSERT: DryHand™ waterproof/breathable
- SHELL: Ripstop
- PALM: TechHide
- FEATURES: Reflective Heat, Amplified. Revolutionary Dual Heating System. Thermal Reflective - up to 20% warmer. Kinetic - Amplifies Temperature 4-5°. Exclusive Heatwave thermodynamic lining. One-handed wrist & cuff cinch



**SEIRUS** **HEATWAVE**

## KBE5L Heater

Call for Expo Pricing

- SUNLIGHT WARMTH - VAL6's radiant heat penetrates evenly and directly into surfaces just like sunlight.
- High 118,000 BTU
- Low 100,000 BTU
- Indoor/Outdoor
- 110 Volt
- Burns Kerosene or Diesel

**See VAL Heaters  
in Action at Expo**

**VAL6**  
OWN THE SUN



## EPX5 Heater

Call for Expo Pricing

- High 140,000 BTU
- Low 100,000 BTU
- Indoor/Outdoor
- 110 Volt
- Burns Kerosene or Diesel

**VAL6**  
OWN THE SUN



**FREE Thermostat  
with Expo orders.  
\$100 Value!**

## 8028 Seirus Neofleece® Headband

**\$9<sup>95</sup>**

Windproof ear inserts keep your ears warm. One size fits all.

**SEIRUS**



## 8138 Heatwave™ Skull Liner

**\$21<sup>95</sup>**

Heatwave Technology reflects the ultimate warmth to keep you comfortable on those cold days. 4-way stretch means one size fits all. Fits under helmet or hat.

**SEIRUS** **HEATWAVE**



## 8051 Seirus Neosock®

One Size Fits All

**\$21<sup>95</sup>**

- The warmest sock ever! New & improved - 50% more stretch!
- Windproof/waterproof Breathable
- Four-way super stretch comfort
- Breathable Macro-porous Neoprene technology for drier warmth
- Seals in the heat
- Outlasts ordinary socks 3 to 1

**SEIRUS**



**Order the next size larger  
than you normally use on gloves only**



## DFA180CV 180k Kero Forced Air Heater

**\$389<sup>00</sup> SALE \$339<sup>00</sup>**

On/off power switch. Built-in run-time fuel gauge. All steel cabinet and fuel tank. Flame out shut-off. Overheat shut-off. U.L. listed large capacity motor. Air flow is 600 CFM. Built-in thermostat. Dual BTU output. Heavy duty pneumatic tires. Built-in air pressure gauge. Dual lift handles. Extension cord wrap. Multi-fuel use (i.e. Kerosene, Diesel No.1 and No.2, JP8, and Jet A fuel).

**DURA HEAT**







Bobcat S250



2016 JLT 190B-M2-48 Clamp



Ford 3910 Tractor

## AIR WORKS

CONSIGNMENT AUCTION LTD.



PO Box 242 • Kidron OH 44636 (Office)

330.749.4362 (Office)

330.816.0006 (Fax)

**AirWorksAuction.com**

**330.674.6188 (Auction Site)**

- 3-Day Auction
- 3-Day Showcase
- 120+ Vendors

- 6 Educational Seminars
- Shuttle to Health Fair & Air Works Ltd.
- Much More!



Dust Collector



Antique Seats



CAT 928G Wheel Loader

## AIR WORKS

CONSIGNMENT AUCTION LTD.



**AirWorksAuction.com**

### THURS., FEBRUARY 14

Antique Auction 9AM w/3 Crews. Mostly tools w/ live online-bidding on antiques via AuctionZip.com, AUCTIONEER #TBA Plus 1-crew on small tools.

### FRI., FEBRUARY 15

Consignment Auction - 9AM w/15 Crews. This will be a full auction including logging, sawmill, woodworking, and metalworking equipment. Three (3) rings of antiques' Live on-line bidding for some WOODWORKING EQUIPMENT valued at \$5,000.

### SAT., FEBRUARY 16

Consignment Auction 8:30AM w/12 Crews. We will continue selling logging, sawmill, woodworking, metalworking, and antiques (including our "collectible toy auction.") We'll also be selling rolling stock (lifts, etc.), power units and more!

## Mt. Hope

### SHOWCASE

Mt. Hope, Ohio

**MtHopeShowcase.com**

**THURS., FEB. 14 – 12PM TO 6PM**

**FRI., FEB. 15 – 8AM TO 6PM**

**SAT., FEB. 16 – 7AM TO 1PM**

The **Mt. Hope Tool Showcase** is located on the Mt. Hope Auction grounds. The showcase will operate adjacent to the 30th Annual Air Works Consignment Auction, with convenient hours that will ensure you can attend both events... and not miss anything! Both events run three days!

Once inside, you'll find **120+ vendors**, a food stand, and clean restrooms that'll make your visit comfortable. Plus, don't miss **6 educational seminars**, including time and financial management, sales and leadership.

Plan to attend one, two or all three days! See you at the Showcase!

## AIR WORKS Ltd.

10680 Dover Road • Apple Creek OH 44606

330.698.0388 (Ph) • 330.698.3088 (Fax)

**The Air Works store will be open regular hours auction week!**

**Air Works Showcase Exclusives when you Preorder & Prepay...**

- ★ Pick your order up at Air Works
- ★ Receive a Free Lunch Ticket
- ★ Look on Page 20 for more details
- ★ Enter to win an AW Portable Compressor MK103H-9P... an \$849 Value!
- ★ Pick up items at Air Works store all week...5AM to 5PM (7AM to 5PM Sat)

**Look for Showcase-Only Specials at our booth!**

**Visit the exclusive DeWalt Gallery!**

