

ANDAL Woodworking Liquidation Auction

2-Ring Auction, Selling On-Site & Online

Complete Woodshop with Equipment,
Complete Newer Finish Shop,
Dust Collection Tools, Accessories & More
Also selling lots of household & personal items

1411 TR 151 Baltic, Ohio 43804

April 12, 2024 - 10:00 AM



Auction Catalog



MAX BID PROGRAM

Remote bidding Program - Bidding agent Marty Troyer

1. Call the auction office 330-845-8485 and sign up as an absentee bidder for this auction.
2. Leave your Max bids (highest price you want to bid) on each item with Marty Troyer and he will be your auction-day bidding agent.
3. Marty will bid on your behalf on auction day.
4. If you are the winning bidder on any item you will be notified the following day by your bidding agent Marty Troyer.
5. You will be prompted to pay your invoice prior to or when you pick up your items.
6. See load out terms for pick-up instructions.

Thinking of Selling...?
INDUSTRIAL EQUIPMENT AUCTIONEERS

AIR WORKS
AIR WORKS AUCTION

Heavy Equipment
Sawmill & Pallet Equipment
Woodworking - Metalworking
Industrial Equipment
Manufacturing Equipment
Rolling Stock

★ ★ ★ ★ ★ ★ ★ ★ ★ ★ ★ ★ ★ ★ ★ ★
(330) 845-8485
www.airworksauktion.com

**Specializing In
Liquidations**

Payment Terms & Conditions:

- Cash, Check, Credit card (3% Card fee applies)
- All items bought to be paid on auction day, or if buying through On-line Bidding or Maxbid program we allow 2-business days for payments to be made.
- All items need paid prior to removal.

Load Out:

Buyers will need to have a paid receipt before loading. Seller will provide assistance for loading on sale day to 6 PM, Sat. April 13, 8am to noon and the following week Mon. through Wed. from 8 AM to 4 PM. Otherwise it will need to be by appointment. (Buyer is responsible for any disassembly if required)

Forklift on-site to help load out.

All machinery is disconnected from hydraulic & electrical for convenience of load out.

Home & Facility:

The 6-acre property including the home, 2-story shop, and barn will be sold at auction April 10th at 6:00 pm by Kaufman Realty & Auctions.

Agent Elmer Yoder 330-641-2408

The finish shop (60' x 200') will be available for lease.

Contact Andy Nisley 330-893-4140



Auctioneer Notes:

This looks to be a full day auction with good clean tools, equipment, supplies, lumber, basically anything you can think of from a company that has been in business for over 20 years. Ring #1 will be selling the items in this catalog and Ring #2 will be selling uncatalogued smalls as well as household appliances and personal items. Andal Woodworking had two locations - Location #1 was their main woodshop and is where the auction is at on April 12th. Location #2 was the Finish shop located a couple miles from the main woodshop. They are bringing over all the smalls from the finish shop to the main woodshop for the auction, but some of the spray booths and bigger finish shop items are noted in the catalog as selling off-site. Those items will stay at the finish shop location and will be sold as they sit for the sake of convenience. Auction day parking will be at the neighbor's for the sake of traffic flow- Just follow parking signs.

Looks to be a good clean auction with stuff for everybody. We will have a food stand onsite, so bring a friend and a trailer and we hope to see you on April 12th. We'll be starting at 10am.

Auctioneer: Dan Troyer





1 Box Lot, Drill Bit Set and Misc. Drill Bits



2 Box Lot, 9 - 7" Irwin Quick Grip Clamps and 1 - 12" clamp.



3 Box Lot, Tape Measures, Utility Knives, Hammers



4 Box Lot, Open End Wrenches



5 Box Lot, Letter Die Set, Hole Saw Set, Socket Driver Bits



6 Box Lot, Lockout Tags, Locks



7 Box Lot, 7 Vise Grip Clamps



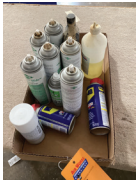
8 Box Lot, Power Tool Wrenches



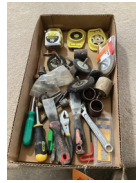
9 Box Lot, Work Lights and 2 - 19 Watt Dimmable Led Bulbs



10 Box Lot, Work Lights



11 Box Lot, Air Tool Oil, W-D 40, Surface Lubricant Spray, NCF Quick Set Spray



12 Box Lot, Die Grinder Bits, Tools



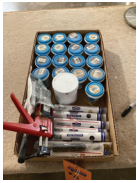
13 Box Lot, Mallets, Hammers, Chisels



14 Box Lot, Hardware Bins



15 Box Lot, Large Open-End Wrenches



16 Box Lot, Assorted Wood Fillers



17 Box Lot, 2 Digital Calipers, Adjustable Magnetic Dial Indicator



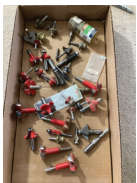
18 Box Lot, Glue Bottles



19 Box Lot, Blow Guns, Air Fittings



20 Box Lot, Jobber Drill Bit Set, Misc. Drill Bits



21 Box Lot, Router Bits, 1/2" and 1/4" Shank



22 Box Lot, Casters



23 Box Lot, 12 - 7" Irwin Quick Grip Clamps



24 Box Lot, Casters



25 Box Lot, Gorilla Tape, Space Balls, Hinges,



26 Box Lot, Tape, Wrap



27 Box Lot, Magnetic Screw Dishes, Tack Glides, 18 Ga. Brad Nails, Misc Furniture Hardware



28 Box Lot, 2 Boxes Small Screw Bins, Drawer Pulls



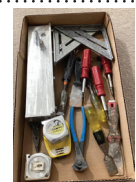
29 Box Lot, Irons



30 Box Lot, Irons



31 Box Lot, Magnets



32 Box Lot, Bed Rail Drilling Guide, Tools



33 Box Lot, Vise Grip Clamps, C-Clamps



34 Box Lot, Magnetic Screw Dishes, Tape, Moister Meyer, 48" Measure Stick



35 Box Lot, Driver Bits, Drill Bits, Kreg Fence Tape, Router Base Plate, Tools



36 Box Lot, Wood Filler, Space Balls, Hole Plugs, Glue Pins



37 Box Lot, Router Bits, 1/2" and 1/4" Shank



38 Box Lot, Equipment Repair Parts



39 Box Lot, Equipment Repair Parts



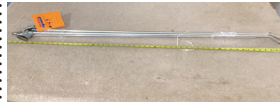
40 Box Lot, Web Clamps



41 Box Lot, Wood Filler, NCF Quick Set Spray



42 Box Lot, Parts Bin Organizer



43 Box Lot, 3 - 48" Blow Guns



44 Box Lot, 4 - 24" Blow Guns



45 Box Lot, Air Fittings, Blow Guns



46 Box Lot, Organizer and Contents



47 Box Lot, Organizer and Contents



48 Box Lot, Organizer and Contents



49 Box Lot, Organizer and Contents



50 Box Lot, Jorgenson Bar Clamps, Irwin Quick Grip Clamps



51 Box Lot, Makita 18 Volt Drill Driver Set with Charger and 3 Batteries



52 Box Lot, Makita 18 Volt Drill Driver Set with Charger and 3 Batteries



53 Box Lot, Makita 18 Volt Drill Driver Set with Charger and 3 Batteries



54 Box Lot, Makita 18 Volt Driver and Router with Charger and 3 Batteries



55 Box Lot, Makita 18 Volt Drill Driver Set with Charger and 3 Batteries



56 Box Lot, 2 Makita 18 Volt Impact Drivers, 2 Angle Drivers with 5 Batteries



57 Box Lot, 2 Makita 10.8/12 Volt Drills with Batteries and Charger



58 Box Lot, Milwaukee M12 Impact Driver with Charger and Battery



59 Box Lot, Milwaukee M12 Impact Driver with Charger and 2 Batteries



60 Box Lot, 2 Makita 18 Volt Drills with Charger and 4 Batteries



61 Box Lot, Makita 10.8/12 Volt Drill With Charger and 2 Batteries



62 Makita 18 Volt Hammer Drill with Charger and Battery



63 2 - 3M 12,000 RPM Random Orbital Sander, 3/16 Orbit



64 2 - 3M 12,000 RPM Random Orbital Sander, 3/16 Orbit



65 2 - 3M 12,000 RPM Random Orbital Sander, 3/16 Orbit



66 2 - 3M 12,000 RPM Random Orbital Sander, 3/16 Orbit



67 3M 12,000 RPM Random Orbital Sander, 3/16 Orbit, 3 New Backing Pads



68 New Unused 3M 12,000 RPM Random Orbital Sander, 3/16 Orbit



69 Box Lot, Wurth 5" Emerald PSA 220 Grit Sandpaper



70 Box Lot, Wurth 5" Emerald PSA 150 Grit Sandpaper



71 Box Lot, Wurth 5" Emerald PSA 150 and 180 Grit Sandpaper



72 3 Makita RT0701C 120 Volt Routers



73 2 Makita RT0701C 120 Volt Routers



74 2 Makita RT0701C 120 Volt Routers



75 2 Makita RT0701C 120 Volt Routers



76 2 Makita RT0701C 120 Volt Routers



77 2 Makita XTR01 - 18 Volt Routers with 2 Batteries



78 2 Makita RT0701C 120 Volt Routers



79 2 Makita PR10E 120 Volt Palm Routers



80 2 Makita PR10E 120 Volt Palm Routers



81 2 Makita PR10E 120 Volt Palm Routers



82 3 Makita PR10E 120 Volt Palm Routers



83 2 Makita PR10E 120 Volt Palm Routers



84 2 Porter Cable 690LR 120 Volt Routers



85 2 Porter Cable 690LR 120 Volt Routers



86 2 Porter Cable 690LR 120 Volt Routers



87 1/4" Air Router Bottom Air Exhaust



88 1/4" MVM Air Router Top Exhaust



89 1/4" MVM Souix Air Router Bottom Exhaust



90 1/4" MVM Souix Air Router Bottom Exhaust



91 1/4" Central Pneumatic Die Grinder For MVM Router Base



92 Senco Finish Pro 18 Finish Nailer 18 Ga. 5/8" to 2"



93 Senco Finish Pro 23SXP Headless Pinner 23 Ga. 1/2" to 13/8"



94 Senco Finish Pro 23SXP Headless Pinner 23 Ga. 1/2" to 13/8"



95 Senco SFT10XP Stapler 20 Ga. 3/8" Crown



96 Fasco F21T Crown Stapler



97 2 Senco SLP20XP Brad Nailer 18 Ga. 5/8" to 15/8"



98 2 Senco Brad Nailers, 1 SLP20XP 18 Ga. 5/8" to 15/8", 1 Finish Pro 18



99 2 Senco SFT10XP Staplers 20 Ga. 3/8" Crown 1/4" to 5/8"



100 2 - 66" Pony Pipe Clamps



101 4 - 66" Pony Pipe Clamps



102 4 - 66" Pony Pipe Clamps



103 6 - 60" Pony Pipe Clamps



104 6 - 48" Pony Pipe Clamps



105 6 - 48" Pony Pipe Clamps



106 6 - 32" Pony Pipe Clamps



107 6 - 32" Pony Pipe Clamps



108 6 - 32" Pony Pipe Clamps



109 6 - 32" Pony Pipe Clamps



110 6 - 32" Pony Pipe Clamps



111 6 - 32" Pony Pipe Clamps



112 6 - 32" Pony Pipe Clamps



113 6 - 32" Pony Pipe Clamps



114 6 - 32" Pony Pipe Clamps



115 5 - 32" Pony Pipe Clamps



116 6 - 32" Pony Pipe Clamps



117 4 - 32" Pony Pipe Clamps



118 Pony Pipe Clamp Rubber Edge Protectors



119 Clamp Storage Cabinet With Folding Glue Table



120 Steton SC 400/3200 Sliding Table Saw Hydraulic Powered



121 Powermatic 66 Table Saw Hydraulic Powered with Extension Tables And Blade Storage Drawer



121A Saw Blades For Powermatic Table Saw



121B Jet 20" Straight Knife Planer Hydraulic Powered



122 Steel City 220 Volt 4 Wheel Power Feeder with Base



123 Dewalt G E 64 Radial Arm Saw With 182" Stand and Flip Stop Fence, Hydraulic Powered



123A 2 - 16" Everlast SP1680A Saw Blades



124 Extrema ET-120-3 Shaper, 1 1/8" Spindle, Hydraulic Powered with Forest City Air Powered Feeder



125 MVM DM-10 Crosscut Saw, Air Powered, Extension Table with Flip Stop Fence



126 Delta 32-325-13 Spindle Line Boring Machine, Air Powered, With Table and Flip Stop Fence



127 Cantek 0371 Single Head Wide Belt Sander, Hydraulic Powered



128 Delta 43-791 Shaper, 1 1/8" Spindle, Hydraulic Powered, Extreme 4 Roll Air Powered Feeder



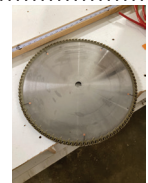
129 Cabinet With Shaper Cutters



130 Extrema ET-120-2 Shaper, 1 1/8" Spindle, Hydraulic Powered, Leitz Sliding Table Attachment



131 General 18" Upcut Saw with Extension Table And Flip Stop Fence, Hydraulic Powered



131A 2 - 18" Everlast SPE1810A Saw Blades



132 Silver Dowler 2 Spindle Dowel Machine, Air Powered



133 Shop Fox W1669/ W1670 Bench Top Radial Drill Press, 115/230 Volt, with Caster Base Stand



134 Kreg Bench Top Pocket Hole Machine, Air Powered



135 Kreg DK1100 FE Pocket Hole Machine, 115 Volt



136 Ritter R911 Edge Sander, 6"x109" Sanding Belt, Hydraulic Powered



137 Grizzly 18" Band Saw, Hydraulic Powered



138 Kreg 4' x 8' Face Assembly Frame Table with Air Clamps



139 34" x 84" Down Draft Sanding Table with Sanding Lights, Electric Powered



140 Sand Pro M6033 Down Draft Table, 33" x 60", 110 Volt



141 2 Sanding Lights



141A 3 Sanding Lights, 1 is incomplete.



142 Omega T50350 Cut Off Saw with 161" Stand and Flip Stop Fence



143 Hitachi C10FSH 10" Sliding Compound Miter Saw, 120 Volt



144 Workstation with Lights and Flip Stop Fence



145 Hitachi C10FSH 10" Sliding Compound Miter Saw, 120 Volt



146 Workstation with Lights and Flip Stop Fence



147 American Lifts T36-015 Electric Lift Table, 28" x 83" Top, 1500 Lbs. Capacity



148 Hurst Drawer Front Drilling Machine



149 Hurst Knife Hinge Notcher Machine



150 Omal Insert C Hinge Drilling Machine with Stand, 110 Volt



150A (INV90058) New Unused Stone-wood Model ST-24AH - 24" Spiral Head Planer with Digital Read Out



150B (INV90050) New Unused Oliver Model 4705 1-1/4" Spindle Shaper with Digital Read Out



150C (5122) - New Unused Oliver 10" Table Saw



150D Powermatic Model HPS-57 Sliding Table Saw, Line Shaft Ready



151 Shop Fox W1669/ W1670 Bench Top Radial Drill Press, 115/230 Volt, with Castor Base Stand



152 Dodds RC80209 - 15 Spindle Dovetailer, Hydraulic Powered



153 Omega RN 450 FM "US" Radial Arm Saw with Stand and Flip Stop Fence, 230 Volt



154 Ritter R870 Drawer Clamp, Air Powered



155 Virutex Edge Bander Maksiwa RBB.1000 Edge Trimmer with Cabinet Base, Electric Powered



156 Router Table with Bosch PR10E Palm Router, 120 Volt



157 2 Sanding Lights



158 Aluminum Lumber Storage Rack with Casters, 78" Wide X 121" Long X 110" High



159 Eagle Machine Blower, 11" Inlet X 8" Outlet, Hydraulic Powered



160 Shavings Bin with Cyclone



161 Dust Collection Pipe Throughout the Shop



161A Humidifier setup Throughout the shop, Includes Water Storage Tank and Control Box



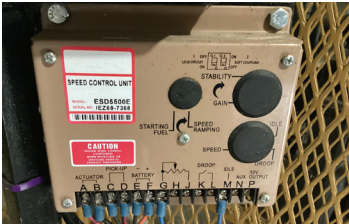
161B 2 Humidifiers



161C 2 Humidifiers



162 Cummins GTA 8.3 Natural Gas Engine with Turbo, WPT Clutch, 175 Hp. At 1800 RPM, 12,540 Hours *More Photos*→



162 Cummins GTA 8.3 Natural Gas Engine with Turbo, WPT Clutch, 175 Hp. At 1800 RPM, 12,540 Hours



164 Belt Driven Alternator,



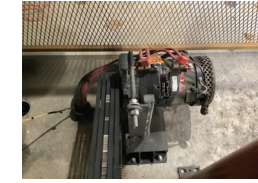
166 Champion CDTB-260 Air Dryer, 260 CFM at 100 PSIG



163 Bauer Rotary Screw Air Compressor



168 Portable Slide Mounted Air Compressor with Kohler Gas Engine



165 Belt Driven Alternator,



167 TTP Heat Exchanger Air Cooler



169 3000 Watt 12 Volt Pure Sine Wave Inverter



169A 10000 Watt 12 Volt Aims Power DC to AC Power inverter Installed in 2022



169B 10000 Watt 12 Volt Aims Power DC to AC Power inverter Installed in 2020



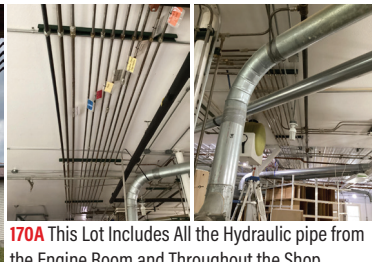
169C 10000 Watt 12 Volt Aims Power DC to AC Power inverter Installed in 2020



169D 10000 Watt 12 Volt Aims Power DC to AC Power inverter Installed in 2022



170 Complete Hydraulic Power System in The Engine Room, 7 Vickers Pumps, Oil Tank, Pipe and Shafts Tank Size Is 6 ft. Long x 3 ft. Wide x 42 In. high Vickers Pumps Listed Below
3520-25-9
2020-8-8
2010-8-4
2520-21-12
25V21
2020-8-8



170A This Lot Includes All the Hydraulic pipe from the Engine Room and Throughout the Shop



171 Spartan 9000MTB Gas Generator



172 58' Safety Railing with Access gates



173 300 Gallon Air Tank



174 Approx. 1000 Gallon Air Tank



175 Craftsman Hollow Chisel Mortiser, 120 Volt



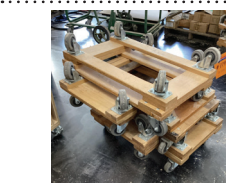
176 41" X 73" Work Bench On Casters



177 Cart and Storage Shelf



178 Storage Shelf



179 10 Furniture Carts



180 11 Furniture Carts



181 6 Carts



181A 3 Carts



182 32" X 61" Cart



183 3 Shelf Cart, 25" X 43"



184 41" X 56" Low Work Bench On Casters



185 41" X 73" Work Bench On Casters



186 2 Storage Carts



187 25" X 97" Heavy Duty Work Bench, Dovetail Drawers with Extension Slides



188 Tall 2 Door Storage Cabinet On Casters



189 2 Carts



190 32" X 72" Work Bench



191 29" X 85" Heavy Duty Work Bench with Dovetail Drawers and Extension Slides on Casters



192 Workstation Cart



193 2 Carts



194 2 Carts



195 36" X 61" Cart with Folding 18 Volt Sanding Light



196 2 Carts



197 Tall Cabinet with Lazy Susan Center on Casters



198 White Storage Shelf On Casters



199 Cart and Storage Shelf



200 2 Wooden Waste Wood Bins



201 42" X 42" Worktable



202 26" X 92" Heavy Duty Workbench, Dovetail Drawers, Extension Slides, Casters, (Workbench Only)



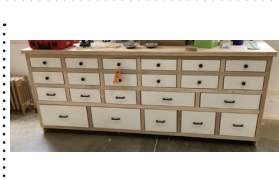
203 4 Carts



204 Waste Bin on Casters



205 4 Wooden Storage Boxes



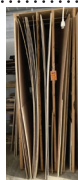
206 New Unused Heavy Duty 27" X 95" Workbench, Dovetail Drawers, Extension Slides, Casters



207 Metal Shelf Cart



208 Jet Pallet Jack



209 15 pcs. 1/4" - 4x8 Mixed Specie Plywood Plus Some Partial Pcs. Contents of 3 Slots



210 20 Pcs. 3/4" - 4x8 Maple Plywood



211 4 Pcs. 1/4" - 4x8 Birch Plywood Plus Some Partial Pcs.



212 5 Pcs. 3/4" - 4x8 Red Oak Plywood



213 16 Pcs. 3/4" - 4x8 Maple Plywood Plus Some Partial Pcs.



214 3 Pcs 3/4" - 4x8 Cherry Plywood Plus Some Partial Pcs.



215 Aprox. 35 Bf 5/4 Qswo Lumber



216 Aprox. 40 Bf 5/4 Br. Maple Lumber



217 Br. Maple and Elm Molding and Trim



218 Aprox. 240 Bf. 4/4 Walnut Lumber



219 Aprox. 70 Bf. Qswo Lumber



219A Aprox. 100 Bf. Rustic Qswo Lumber



220 Aprox 166 Lf. Poplar Drawer Box Lumber



221 Aprox. 60 Bf. 4/4 Maple Lumber



222 Aprox. 295 Bf 4/4 Red Oak Lumber



223 Aprox. 125 Bf 5/4 and 4/4 Cherry Lumber



224 Aprox. 189 Lf Poplar Drawer Box Lumber



225 Aprox. 60 Bf. 5/4 and 4/4 Elm Lumber



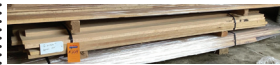
226 Aprox. 70 Bf. 5/4 and 4/4 Hickory Lumber



227 Wall Mounted Aluminum Lumber Storage Bin



228 Plywood Storage Bin



229 Aprox. 130 Ft. 5/4 QSWO Lumber



230 Pile of Mixed Specie Lumber



231 5/4 Sassafras Lumber



232 2x4 Sassafras Lumber



233 2" Sassafras Lumber



234 Wall Mounted Molding Storage Bin 12' Long X 7' High X 17" Wide



235 Grizzly 6 Drawer Tool Chest and Drill Bit Organizer with Drill Bits



236 3 Hardware Organizer Bins and Contents



237 E Z Glue Applicator, Titebond Wood Glue



238 Cart and 12 Furniture Blankets



239 Cart and 6 Furniture Blankets



240 Upholster Roll Cabinet and Cutting Table



241 2 - 30" Comfort Zone Fans, 120 Volt



242 2 - 30" TPI Corporation Fans, 120 Volt



243 2 - 30" Fans, 1 TPI Corporation, 1 Strongway, 120 Volt



244 16" Oscillating Fan, 120 Volt



245 Irontron 65 ft. Retractable Cord Reel



246 Central Pneumatic Retractable Hose Reel With 50 ft. Air Hose



247 2 Craftsman Retractable Air Hose Reels



248 Central Pneumatic Retractable Hose Reel With 50 ft. Air Hose



249 2 Retractable Air Hose Reels



250 Box Lot, Air Hose



251 Box Lot, Air Hose



252 Box Lot, Air Hose



253 Box Lot, Senco Fasteners, 18 and 20 Ga. Crown Staples and Brad Nails



254 Werner 4' Step Ladder 300 lbs. capacity



255 Box Lot, Air Fittings



256 Grasslin Timer Alarm



257 Organizer Bins And Contents



258 Box Lot, Open End Wrenches



259 Box Lot, Tools , Mallet, Vise Grips, Nail Puller, Tin Snips, Needle Nose Pliers



260 Box Lot, Socket Set, Flat Boring Bit Set



261 Box Lot, Dewalt Bin Box, Parts Organizer, WD-40, Caulk,



262 Box Lot, Craftsman Circular Saw, Chicago Electric Reciprocating Saw, Black and Decker 7" Grinder



263 Box Lot, Casters



264 S and H Drilling Jig



265 Dewalt DWS780 Double Bevel Sliding Compound Miter Saw With Base



266 Box Lot, Hand Tools, Champion Heavy Duty Drill Bit Set



267 Box Lot, Porter Cable Crown Stapler, Senco Staples, Gorilla Tape, Air Nozzles



268 Box Lot, Irwin Quick Grip Clamps, Hammers, Gorilla Tape



269 Box Lot, Makita 18 Volt Cordless Tools, 2 Impact Drivers, 2 Angle Drivers, Drill, 5 Batteries, Charge



270 Box Lot, 3M Sanders 12,000 RPM 3/16 Orbit, Backing Pads, Hand Sander



271 Milwaukee 12 Volt Impact Driver with Battery and Charger



272 Milwaukee 12 Volt Impact Driver with 2 Batteries and Charger



273 2 Senco Tools, 1 Finish Pro 18Mg, and 1 SLP20XP Finish Nailers



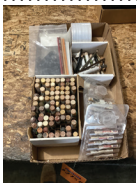
274 Box Lot, Wurth 5" PSA Sandpaper Most is 150 Grit, all Opened Boxes



275 2 Boxes Finish Shop Supplies



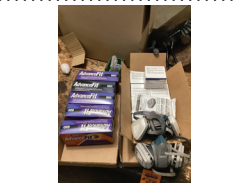
275A Box Lot, Sandpaper, 2 Boxes 3M Stikit Sandpaper



275B Box Lot, Touch Up Crayons



275C Box Lot, Finish Shop Supplies, Barrel Wrench, Filters



276 2 Boxes Finish Shop Supplies, Nitrile Gloves, 3M Particle Filters, Filter Masks



277 Box Lot, Stain Samples



278 2 Door Cabinet with OCS Stain Samples



279 Box Lot, 3M Multi Use Tape, Masking Tape



280 Box Lot, Finish Shop Supplies, Desk Top Organizer, Masters Magic Touch Up Markers



281 3 Pony Pipe Clamps,



282 Parts Bins With Stand and Contents



283 Central Pneumatic Retractable Hose Reel with 50' Air Hose



284 Wesco Fork Mounted Drum Grabber and Lifter



285 Dewalt DWE7491 10" Table Saw Volt with Folding Transport Base



286 Jet Pallet Jack



287 30" X 84" Knight Air Lift Table, 2000 Lbs. Capacity



288 25" X 74" Work Bench With Vise, Dovetail Drawers Extension Slides



289 25" X 109" Work Bench with File Drawers



290 32" X 55 Workstation With Casters



291 Mirka Direct Electric Random Orbital Sander, 3/16 Orbit, Central Vacuum



293 25" X 52" Workstation With Shelves and Casters



294 Mirka Direct Electric Random Orbital Sander, 3/16 Orbit Central Vacuum



295 Cart with Drawer Slide Covers



296 Cart with Drawer Slide Covers



297 Glass Storage Cart and Glass Contents



298 Drying Cart



299 Drying Cart



300 Drying Cart



301 Drying Cart



302 Drying Cart



303 Lazy Susan Top Finish Cart



304 8 Furniture Carts



305 7 Furniture Carts



306 12 Furniture Carts



307 13 Furniture Dollies



308 12 Furniture Dollies



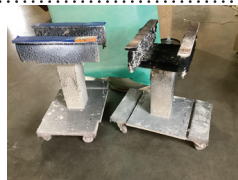
309 12 Furniture Dollies



310 19 Furniture Dollies



311 2 Finish Carts



312 2 Finish Carts



313 Dining Room Tabletop Finish Cart



314 Dining Room Tabletop Finish Cart



315 Tilting Dining Room Tabletop Finish Cart



316 Drying Cart



317 Drying Cart



318 Drying Cart



319 Drying Cart



320 Drying Cart



321 Bin Of 45 Bed Dollies



322 Bin Of 45 Bed Dollies



323 Master 28" Electric Fan



324 Storage Shelf



325 Double 5 Gallon Bucket Dumping Cart



326 6 - 22" Lithonia Lighting 120 Volt Led Hanging Lights



327 5 - 44" Sunpark Electronics 120 Volt Led Hanging Lights



328 2 Drawer 20" x 32" Workstation with Casters



329 Furniture Blankets and Storage Cart



330 Air Powered Paint Shaker With Cabinet



331 Drum Cradle with Wheels



332 Mecor Barrel Dollie



333 5 Boxes Stain Wiping Rags



334 6 Boxes Stain Wiping Rags



335 Pallet Of 4' x 8' Cardboard Sheets



336 2 Barrel Carts



337 Amco Mister



338 Graco Finish Pump On Cart



339 Graco Finish Pump with Graco G15 Spray Gun



340 Graco Air Finish Sprayer with Air Assist 15 Spray Gun



341 Graco Finish Pump with Graco G15 Spray Gun



342 2 Fan Double Sided Sanding Station. Sells Off Site



343 R&S Spray Booth 123" Wide X 112" Deep x 99" High. Sells Off Site



344 R&S Spray Booth 149" Wide x 112" Deep x 109" High. Sells Off Site



345 R&S Pass Through Spray Booth. Inside Dimensions Are 170" Long x 144" Wide. Sells Off Site



346 Hastings 32,000 CFM Natural Gas Air Make Up System. Sells Off Site



347 Air Make Up Duct Work. Sells Off Site



348 Ford 6.8 Liter 103 Hp. Natural Gas Engine with 11,167 Hours, NACD Clutch, Sells Off Site



349 Bauer Rotary Screw Air Compressor. Sells Off Site



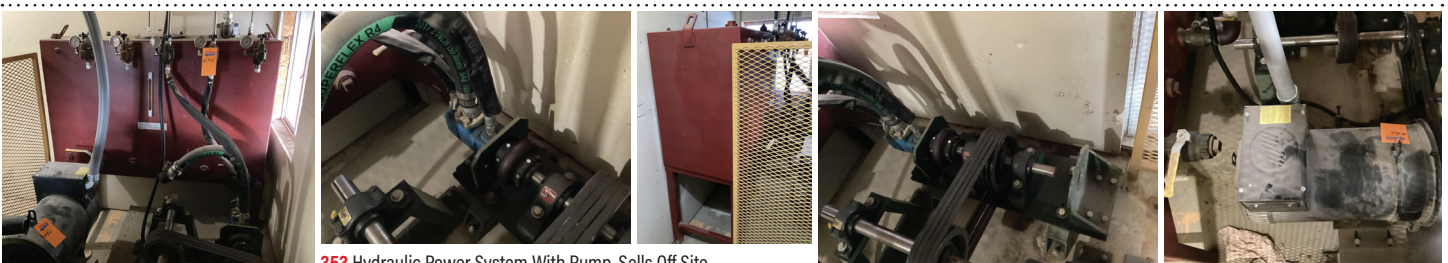
350 Nano ND-120 Air Dryer. Sells Off Site

351 TTP Air Cooler, Model UPA-100-1, Sells Off Site

351A 500 Gallon Air Tank, Sells Off Site

351B 300 Gallon Air Tank, Sells Off Site

352 46 Kw Belt Driven Generator. Sells Off Site



353 Hydraulic Power System With Pump, Sells Off Site



354 Elm Office Desk 32" x 95" x 42" High



355 Elm Office Desk 32" x 95" x 45" High



356 2 Elm Corner Cabinets



357 2 Tall Office Chairs



358 Metal Office Desk And Chair



359 Canon Fax, Copy Machine



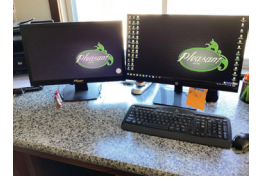
360 HP Laser Jet Pro M225dn Printer



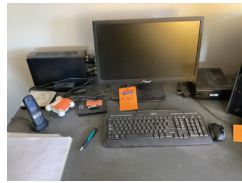
361 HP Laser Jet 1536dnf MFP Printer



362 Canon Fax, Copy Machine



363 Pleasant Word Processor



364 Pleasant Word Processor



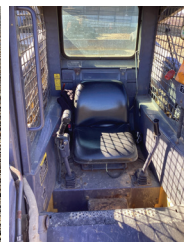
365 Wall Mounted Coat Rack



366 Fuel Tank



367 2006 Cornelius 16' Trailer, VIN # 4MJUB16266E041849, 12,000 Lbs. GVWR



368 New Holland LS180 Skid Loader with Bucket and Forks, 3551 Hours

Notes

Horizontal lines for taking notes.

ANDAL Woodworking Liquidation Auction

2-Ring Auction, Selling On-Site & Online

Complete Woodshop with Equipment,
Complete Newer Finish Shop,
Dust Collection Tools, Accessories & More
Also selling lots of household & personal items

1411 TR 151 Baltic, Ohio 43804

April 12, 2024 - 10:00 AM

AIR WORKS

AIR WORKS AUCTION



Air Works Consignment Auction, LLC

P.O. Box 242

Kidron, OH 44636

Accepting Consignments For this Auction

Call: 330-845-8485



Auction Catalog

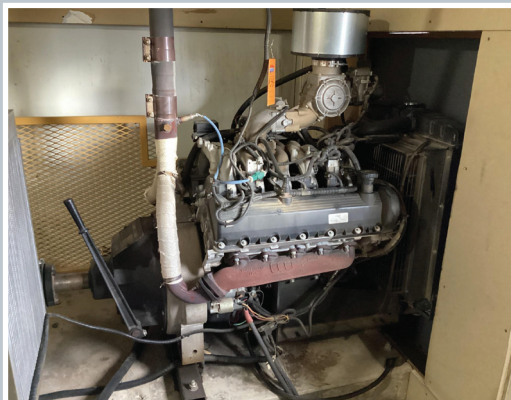
AIR WORKS

AIR WORKS AUCTION



ANDAL WOODWORKING LIQUIDATION AUCTION

APRIL 12, 2024 - 10:00 AM
1411 TR 151 BALTIC, OH 43804



Thinking of Selling...?

INDUSTRIAL EQUIPMENT AUCTIONEERS

AIR WORKS

AIR WORKS AUCTION

Heavy Equipment
Sawmill & Pallet Equipment
Woodworking - Metalworking
Industrial Equipment
Manufacturing Equipment
Rolling Stock

(330) 845-8485
www.airworksauktion.com

**Specializing In
Liquidations**



SCAN ME

