



NEW YORK

Accepting Consignments

# SAWMILL AUCTION

## SAWMILL LIQUIDATION AUCTION

**Tuesday, October 15, 2024 | 6:00 pm**

**Location: 16040 S.R. 30N, Constable, NY 12926**

**Online-Only with Max Bid Program  
available for non-internet users**



2 sawmills including carriages & tracks, log deck, blower, chipper, debarker, edger, conveyors and more; Norwood Model HD36V2 Lumber Pro Portable Sawmill In Like New Condition With All The Extra Add ons; Forano Model SB-326 L Ring Debarker In Good Working Condition; 2001 Woodmizer LT40 Hydraulic Sawmill, 3300 hrs, Acusset networks, debarker, waterlube wheels, 25 hp Command Kohler, 15 extra blades, cuts 28" x 21' logs, good condition; Yale 4000 lb. forklift; Baker 3 head resaw; 56 plus cube bolt bin with 6 plastic boxes of bolts per bin including many started boxes of misc. bolts and other fasteners. Lots of new in the box Stanley hinges, latches, pulls etc. Tools including snips, screwdrivers, 9 new Fuller pipe wrenches; Cat 953 supertrack, track loader w/Fecon mulching head, 460 hp Cat 3406 engine, 2855 hrs, 36in wide tracks; Yale Model GLC040AFNUAF074 Forklift, 4000 Lbs. Capacity, 2 Stage Mast, Solid Rubber Tires; Baker Model BBR-0 Resaw, 3 Head With Return Conveyor, Needs Refurbished; Shop Built Turn Around Conveyor For Baker Resaw In Excellent Condition, Hydraulic Powered; Baker Model RT-0 Turn Around Conveyor;

## ACCEPTING CONSIGNMENTS FOR THIS AUCTION

We are looking to add good used or new items to this auction. This is an Online-Only Auction.

Your consignments do not need to be onsite and can remain at your location through the auction. You will need to provide loading for the Buyer.

Baker Model BE-0 Portable Edger with Isuzu Deisel; Froedge Model LBD 450 Deduster; Corinth American Circular Sawmill With 3 Headblock Carriage, Operators Cabin, 70' Of Track; Morbark Debarker with Infeed and Outfeed; Morbark Model 3-48 Chipper; Morbark Log Turner; Lane 3 Headblock Carriage Circular Sawmill Setup with 50' of Track, Line Shaft Powered; Frick Gang Edger with Infeed and Outfeed Roll Conveyors, Line Shaft Powered; Mack Model E7-300 Deisel Power Unit with 18 Speed Transmission; Morbark 4 Head Block Carriage; Normet Model CH231 Chipper Mounted on A Mack R-600 Truck; 10" x 26' Shavings Elevator; 4 Strand Transfer Deck 11' Wide x 10' Long x 5' High; Live Rolls 32" Wide Rolls x 27' Long; Live Rolls 32" Wide Rolls x 17' Long; Live Rolls 32" Wide Rolls x 10' Long; 2 Strand Transfer Deck 4' Wide x 22' Long x 6' High; Log Kicker; 2 Strand Transfer Deck 7' Wide x 23' Long x 40" High; 3 Strand Transfer Deck 5' Wide x 23' Long x 40" High; 4 Strand Transfer Deck 13' Wide x 29' Long x 42" High; Large Scrap Pile; 4 Transfer Deck Shafts and 2 I Beam Mounts; Edger For Parts; Scrap Pile, Belt Conveyors, Steel Decks, I Beams; Manure Pump; Belt Conveyor 22" Wide x 15'6" Long; 4 Transfer Deck Chains; I Beam Equipment Mounting Deck; Log Kicker 13' Wide x 5' High; Live Hourglass Log Rolls 26" wide Rolls x 20' Long with Left and Right Kickers; Tank With Stand 2' x 6' Long x 5' High; General Electric Model 5k326d49 Electric Motor, 20 Hp, 220/440 Volt 3 Phase; Reliance Model 213TZ electric motor with Radicon Gear Box; 4 Strand Transfer Deck 13' Wide x 12' Wide x 5' High; Shop Built Log Splitter with Wisconsin Model THD Engine; Cement Mixer; Ingersoll-Rand Model 40 Air Compressor with Electric Motor; Tyrone-Berry Model SMA-215 Hydraulic Power Unit; Corinth Model 4-30 Log Turner; Log Kicker 13' Wide x 4' Long x 5' High; Log Cart; Syracuse Metal Lathe; Electric Fan; Cleveland Gearbox, Electric Motor, Gear Box; Hilman Hardware 4 Unit Store Display With Hex Head Bolts; 4 Unit Hillman Hardware Bolt Display with Contents; 4 Unit Hillman Hardware Bolt Display with Contents, Filled With Various Sizes of Lag Bolts; 4 Unit Hillman Hardware Bolt Display with Contents, Filled With Various Sizes of Lag Bolts; 4 Unit Hillman Hardware Bolt Display with Contents, Filled With Various Sizes of Carriage Bolts; 4 Unit Hillman Hardware Bolt Display with Contents, Filled With Various Sizes of Carriage Bolts; 4 Unit Hillman Hardware Bolt Display with Contents, Filled With Various Sizes of Hex Head Bolts; 4 Unit Hillman Hardware Bolt Display with Contents, Filled With Various Sizes of Hex Head Bolts; 4 Unit Hillman Hardware Bolt Display with Contents, Filled With Various Sizes of Hex Head Bolts; Metal Shelf Bracket Display Filled With Various Sizes of Brackets; Stanley Hardware Display Contents, Pneumatic Door Closers, Door Hinges, Gate Latches and More; Stanley Hooks, Locks And Doorstops Display And Contents; Stanley Mending Plates, Tee Plates Display and Contents; Stanley Square Corner Hinges, Flat Corner Braces, Corner Braces Display and Contents; Stanley Utility Hinges, Hook and Strap Hinges, Strap Hinges, Tee Hinges Display and Contents; 4 Fuller Pipe Wrenches and Store Display, 18", 14", 10" and 8" Pipe Wrenches; 2 Fuller 14" Pipe Wrenches; 3 Fuller 14" Pipe Wrenches; Box Lot Fuller Flat and Phillips Screw Drivers, Fuller Aviation Snips; Hilman Misc. Boxes of Bolts of Various Kinds And Sizes; Metal Bolt Bin; Philadelphia Gear Works Gear Box; Quantity Of Various Sizes of Replacement Rollers; 2 Bear Claw Skidder Tire Chains;

SEE MORE AT  
[AirWorksAuction.com](https://airworksauktion.com)

**AIR WORKS**

AIR WORKS AUCTION



**airworksauktion.com · 330.845.8485**  
**sales@airworksauktion.com · P.O. Box 242 Kidron, OH 44636**

## Sawmill Liquidation Auction



Log Loading Ramp And Winch Package  
Manual Roller Toe Boards  
Rapid Dogging And Rolling System  
Log Dogs/Log Rest Kit  
Cross Bunk Kit  
2 Foot Bed Extension Kit  
4 Board Offloading Rollers  
Automatic Dogging Assist  
Log Rest Actuators  
Led Work Light Kit  
Towing Lights  
8 New Saw Blades

**#190** Norwood Model HD36V2 Lumber Pro Portable Sawmill In Like New Condition With All The Extra Add ons



**#191** 2001 Woodmizer LT40 Hydraulic Sawmill, 3300 hrs, Acusset setworks, debarker, waterlube wheels, 25 hp Command Kohler, 15 extra blades, cuts 28" x 21' logs, good condition.



**#192** Forano Model SB-326 L Ring Debarker In Good Working Condition



**#193** Cat Model 953 Supertrak Track Loader With Fecon Mulching Head, Under 500 Hours On New Mulching Drum



**#194** Yale Model GLC040AFNUAF074 Forklift, 4000 Lbs. Capacity, 2 Stage Mast, Solid Rubber Tires



**#195** Baker Model BBR-0 Resaw, 3 Head With Return Conveyor, Needs Refurbished



**#196** Shop Built Turn Around Conveyor For Baker Resaw In Excellent Condition, Hydraulic Powered



**#197** Baker Model RT-0 Turn Around Conveyor



**#198** Baker Model BE-0 Portable Edger with Isuzu Deisel



**#199** Froedge Model LBD 450 Deduster



**#200** Corinth American Circular Sawmill With 3 Headblock Carriage, Operators Cabin, 70' Of Track



**#201** Morbark Debarker with Infeed and Outfeed



**#202** Morbark Model 3-48 Chipper



**#203** Lane 3 Headblock Carriage Circular Sawmill Setup with 50' of Track, Line Shaft Powered



**#204** Frick Gang Edger with Infeed and Outfeed Roll Conveyors, Line Shaft Powered





**#205** Mack Model E7-300 Deisel Power Unit with 18 Speed Transmission



**#206** Morbark 4 Head Block Carriage



**#207** Normet Model CH231 Chipper Mounted on A Mack R-600 Truck



**#208** 10' x 26' Shavings Elevator



**#209** 4 Strand Transfer Deck 11' Wide x 10' Long x 5' High



**#210** Live Rolls 32' Wide Rolls x 27' Long



**#211** Live Rolls 32' Wide Rolls x 17' Long



**#212** Live Rolls 32' Wide Rolls x 17' Long



**#213** 2 Strand Transfer Deck 4' Wide x 22' Long x 6' High



**#214** Log Kicker



**#215** 2 Strand Transfer Deck 7' Wide x 23' Long x 40' High



**#216** 3 Strand Transfer Deck 5' Wide x 23' Long x 40' High



**#217** 4 Strand Transfer Deck 13' Wide x 29' Long x 42' High



**#218** Large Scrap Pile



**#219** 4 Transfer Deck Shafts and 2 Beam Mounts



**#220** Edger For Parts



## Sawmill Liquidation Auction



**#221** Scrap Pile, Belt Conveyors, Steel Decks, I Beams



**#222** Manure Pump



**#223** Belt Conveyor 22" Wide x 15'6" Long



**#224** 4 Transfer Deck Chains



**#225** Beam Equipment Mounting Deck



**#226** Log Kicker 13' Wide x 5' High



**#227** Live Hourglass Log Rolls 26" wide Rolls x 20' Long with Left and Right Kickers



**#228** Tank With Stand 2' x 6' Long x 5' High



**#229** General Electric Model 5k326d49 Electric Motor, 20 Hp, 220/440 Volt 3 Phase



**#230** Reliance Model 213TZ electric motor with Radicon Gear Box



**#231** 4 Strand Transfer Deck 13' Wide x 12' Wide x 5' High



**#232** Shop Built Log Splitter with Wisconsin Model THD Engine



**#233** Cement Mixer



**#234** Ingersoll-Rand Model 40 Air Compressor with Electric Motor



**#235** Tyrone-Berry Model SMA-215 Hydraulic Power Unit



**#236** Corinth Model 4-30 Log Turner





**#237** Log Kicker 13' Wide x 4' Long x 5' High



**#238** Log Cart



**#239** Syracuse Metal Lathe



**#240** Electric Fan



**#241** Cleveland Gearbox, Electric Motor, Gear Box



**#242** Hilman Hardware 4 Unit Store Display With Hex Head Bolts



**#243** 4 Unit Hillman Hardware Bolt Display with Contents



**#244** 4 Unit Hillman Hardware Bolt Display with Contents, Filled With Various Sizes of Lag Bolts



**#245** 4 Unit Hillman Hardware Bolt Display with Contents, Filled With Various Sizes of Lag Bolts



**#246** 4 Unit Hillman Hardware Bolt Display with Contents, Filled With Various Sizes of Lag Bolts



**#247** 4 Unit Hillman Hardware Bolt Display with Contents, Filled With Various Sizes Carriage Bolts



**#248** 4 Unit Hillman Hardware Bolt Display with Contents, Filled With Various Sizes of Carriage Bolts



**#249** 4 Unit Hillman Hardware Bolt Display with Contents, Filled With Various Sizes of Hex Head Bolts



**#250** 4 Unit Hillman Hardware Bolt Display with Contents, Filled With Various Sizes of Hex Head Bolts



**#251** 4 Unit Hillman Hardware Bolt Display with Contents, Filled With Various Sizes of Hex Head Bolts



**#252** Metal Shelf Bracket Display Filled With Various Sizes of Brackets

## Sawmill Ilquidation Auction



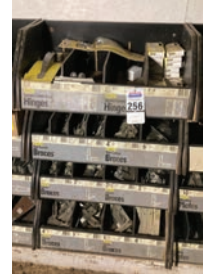
**#253** Stanley Hardware Display  
Contents, Pneumatic Door Closers, Door  
Hinges, Gate Latches and More



**#254** Stanley Hooks, Locks And Door-  
stops Display And Contents



**#255** Stanley Mending Plates, Tee  
Plates Display and Contents



**#256** Stanley Square Corner Hinges,  
Flat Corner Braces, Corner Braces  
Display and Contents



**#257** Stanley Utility Hinges, Hook and  
Strap Hinges, Strap Hinges, Tee Hinges  
Display and Contents



**#258** 4 Fuller Pipe Wrenches and Store  
Display, 18", 14", 10" and 8" Pipe Wrenches



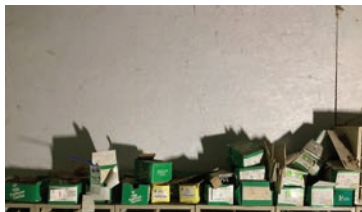
**#259** 2 Fuller 14" Pipe Wrenches



**#260** 3 Fuller 14" Pipe Wrenches



**#261** Box Lot Fuller Flat and Phillips  
Screw Drivers, Fuller Aviation Snips



**#262** Hilman Misc. Boxes of Bolts of  
Various Kinds And Sizes



**#263** Metal Bolt Bin



**#264** Morbark Log Turner



**#265** Philadelphia Gear Works Gear Box



**#266** Quantity Of Various Sizes of  
Replacement Rollers



**#267** 2 Bear Claw Skidder Tire Chains



**330.845.8485**



# MAX BID PROGRAM

## Remote Bidding Program for people with no internet access

1. Call the auction office 330-845-8485 and sign up as an absentee bidder for this auction.
2. Leave your Max bids (highest price you want to bid) on each item with the office.
3. Our agents Marty Troyer or Mike Yoder will be your auction-day bidding agent. They will bid on your behalf on auction day.
4. If you are the winning bidder on any item you will be notified the following day by one of our bidding agents.
5. You will be prompted to pay your invoice prior to picking up your items.
6. See load out terms for pick-up instructions.

### To clarify some regularly asked questions:

#### Does the Max Bid mean the auction agents will enter the max amount right away?

*NO, the Max Bid you give the office only means you are willing to go up to that amount. The bidding agents are responsible for buying the items at the lowest, most competitive price for our customers same as if you were bidding onsite.*

#### Will I be notified if I don't get the item?

*Only the winning bidders will be notified. If you don't have a contact phone or voice mail you can also call us after the auction to check if you were the winning bidder.*

LOT NUMBER	DESCRIPTION	MAX BID
<hr/>	<hr/>	\$ <hr/>
<hr/>	<hr/>	\$ <hr/>
<hr/>	<hr/>	\$ <hr/>
<hr/>	<hr/>	\$ <hr/>
<hr/>	<hr/>	\$ <hr/>
<hr/>	<hr/>	\$ <hr/>
<hr/>	<hr/>	\$ <hr/>
<hr/>	<hr/>	\$ <hr/>

**Thinking of Selling...?**

**INDUSTRIAL EQUIPMENT AUCTIONEERS**

**AIR WORKS**

**AIR WORKS AUCTION**



**Heavy Equipment  
Sawmill & Pallet Equipment  
Woodworking • Metalworking  
Industrial Equipment  
Manufacturing Equipment  
Rolling Stock**



**(330) 845-8485  
www.airworksauktion.com**

**Specializing In  
Liquidations**

**AIR WORKS**

**AIR WORKS AUCTION**



P.O. Box 242  
Kidron, OH 44636

# SAWMILL LIQUIDATION AUCTION

**Tuesday, October 15, 2024 | 6:00 pm**  
*Online-Only with Max Bid Program  
available for non-internet users*



## MAX BID PROGRAM

**Remote Bidding Program for people with no internet access**

1. Call the auction office 330-845-8485 and sign up as an absentee bidder for this auction.
2. Leave your Max bids (highest price you want to bid) on each item with the office.
3. Our agents Marty Troyer or Mike Yoder will be your auction day bidding agent. They will bid on your behalf on auction day.
4. If you are the winning bidder on any item you will be notified the following day by one of our bidding agents.
5. You will be prompted to pay your invoice prior to picking up your items.
6. See load out terms for pick-up instructions.

**Auction Terms and Information:** Cash, Check or Credit Card w/valid ID. There is a 15% buyer's premium for Online bidding with an additional 3% for all credit card purchases. Absentee Max-Bid Program is available for this auction, call 330-749-4362.

**Check Out & Loading:** Buyers will need to have a paid receipt before loading, no exceptions. The buyer is responsible for dismantling and preparing equipment for loading. Seller assistance for loading is available on Oct. 17, 18, 21, 22, 23, 24, 25, 8:00 AM to 4:00 PM daily. Otherwise, it will need to be by appointment.

*Any questions contact auction manager Emanuel*  
330-749-7259



**Scan To  
Bid Online**

**AIR WORKS**

**AIR WORKS AUCTION**



airworksauktion.com

330.845.8485

sales@airworksauktion.com

P.O. Box 242 Kidron, OH 44636

**INDUSTRIAL EQUIPMENT  
AUCTIONEERS**

**330.845.8485**

**AirWorksAuction.com**