

AIR WORKS

CONSIGNMENT AUCTION LTD.



PIONEER EQUIPMENT INC.

Product Line Dispersal Auction
Wednesday December 28, 2022 - 9:00AM
Mt. Hope Event Center
8076 SR 241 Millersburg, OH 44654
(In Mt. Hope)

Truly a unique opportunity to purchase viable and profitable business segments of an iconic brand. Pioneer has been an agricultural industry leader in innovation and quality for over 40 years. Every product line being offered has undergone hours of engineering and testing. This is how Pioneer created a trusted brand with products that have been proven to perform year after year. Some products will be offered individually while others, such as plows, forecarts, PTO carts and others will be offered separately then combined as one offering.

**BUSINESS OPPORTUNITIES - NEW PIONEER MACHINERY - USED PIONEER MACHINERY
PIONEER PARTS & ACCESSORIES - FABRICATION EQUIPMENT**

330.749.7259 - AirWorksAuction.com - sales@airworksauuction.com

AUCTION DETAILS

Please review the following auction details to ensure that you understand how the sale will be conducted and what is included in all lots.

TERMS

Payment Terms: cash, check, wire transfer (3% credit card processing fee) **Sales tax will be charged unless exempt**
On-site: No Buyer's Premium
Max Bid Program (Bidding Agent): 5% Buyer's Premium
Online Bidding/Proxibid: 10% Buyer's Premium
Auctioneers: Dan Troyer, Eli Troyer, Steve Chupp, Stephen Yoder and others

Load Out Dates/Times:

Wednesday Dec. 28 after the auction - 6:00PM
December 29, 30 - 8:00AM - 4:00PM
December 31 8:00AM - 11:00AM

All items must be removed by 4:00PM on January 2. The lot is closed on Sunday

PRODUCT LINES DETAILS

Lots 1-38 will be sold as complete business opportunities. Buyer will be purchasing all Pioneer Equipment, Inc. proprietary material related to the product, including:

- CAD drawings
- Fixtures
- Jigs
- Customer lists
- Component lists
- Manuals
- Marketing materials

Several groups of products will be offered separately, and then combined as a single lot including all lots in the group, to sell whichever way brings most. (To sell as a combination, the total sale price must be raised 10% over the combined winning bids on the individual business opportunities).

Lots 1-5 will be offered as the Plow Business (Lot 6)

Lots 9-11 will be offered as the PTO Cart Business (Lot 12)

Lots 13-16 will be offered as the Wagon Gear Business (Lot 17)

Lots 18-19 will be offered as the Cultimulcher Business (Lot 20)

Note: All remaining raw inventory & parts related to the product will also sell to the successful bidder at a sum additional to the winning bid. The estimated total cost of the raw inventory and parts is listed in this mailer and final number will be provided day of sale.

Lots 7, 8, 21, 34 & 36 consist of collections of several products which will not be offered separately.

Questions? Call the Air Works Auction office at 330-749-4362

Breakfast & Lunch will be available on-site on auction day-by Mrs. Yoder's Kitchen

Please Direct all Inquiries to Air Works Auction

General Info: 330-749-4362 Office

Business Opportunities:

330-749-9478 Dan Troyer

330-749-5086 Reuben Troyer

New Machinery & Consignments:

330-749-7259 Emanuel Miller



HOTEL INFORMATION:
Sleep Inn & Suites
Mt. Hope Ohio

(Adjacent to Auction site)
(GPS) 8050 State Route 241 Millersburg OH, 44654

Call 330.294.9977

Max Bid Program Bidding agent Marty Troyer

1. Call the auction office 330-749-4362 and sign up as an absentee bidder for this auction.
2. Leave your Max bids (highest price you want to bid) on each item with Marty Troyer (phone or mail, using this catalog) and he will be your auction-day bidding agent.
3. Marty will bid on your behalf on auction day. Note: The auctioneer will not know what your max bids are, just to confirm that you can have confidence and absolutely trust your bidding agent.
4. If you are the winning bidder on any item you will be notified the following day by your bidding agent Marty Troyer.
5. You will be prompted to pay your invoice prior to or when you pick up your items.



**Ring 1
9:00 AM**

PRODUCT LINES

Remaining **RAW INVENTORY & PARTS** will be included with each product line at the value indicated in. This cost will be **in addition** to the winning bid. Note: Values are approximate. Itemized inventory and final values will be available on day of sale.

PLOWS

- LOT 1 SULKY PLOW (BUSINESS)** Raw Inventory/Parts \$20,082.41
- LOT 2 FOOTLIFT SULKY PLOW (BUSINESS)** Raw Inventory/Parts \$34,175.46
- LOT 3 WALKING PLOW (BUSINESS)**
- LOT 4 GANG PLOW BUSINESS (BUSINESS)** Raw Inventory/Parts \$12,996.53
- LOT 5 SPRING RESET ROCKPLOWS (BUSINESS)** Raw Inventory/Parts \$210.87

LOT 6 PIONEER PLOW BUSINESS

Consists of lots 1-5
(10% Raise required to purchase as combination)



FORECARTS

LOT 7 SUMMIT FORECART BUSINESS

Consists of:
SUMMIT FORECART (HAFLINGER)
LEVER STEERING FORECART
PRODUCE FORECART
SUMMIT FORECART (DRAFT)
TRAIL PACKAGE

Raw Inventory/Parts
\$24,533.49



LOT 8 FORECART ATTACHMENTS BUSINESS

Consists of:
BLADE
RAISED BED LEVELER
POTATO PLOW
CULTIVATOR

Raw Inventory/Parts
\$2,045.29



PTO CARTS

- LOT 9 23 HP PTO CART (BUSINESS)** Raw Inventory/Parts \$14,357.97
- LOT 10 2-WHEELED GAS & DIESEL PTO CARTS (BUSINESS)** Raw Inventory/Parts \$57,478.56
- LOT 11 4-WHEEL PTO CART (BUSINESS)** Raw Inventory/Parts \$776.92

LOT 12 PTO CART BUSINESS

Consists of lots 9-11
(10% Raise required to purchase as combination)



WAGON GEARS

- LOT 13 3800 WAGON GEAR (BUSINESS)** Raw Inventory/Parts \$18,518.22
- LOT 14 4700 WAGON GEAR (BUSINESS)** Raw Inventory/Parts \$4,077.49
- LOT 15 9600 WAGON GEAR (BUSINESS)** Raw Inventory/Parts \$31,316.90
- LOT 16 FIBERGLASS FLATBED (FLATBED ONLY) (BUSINESS)** Raw Inventory/Parts \$336.81

LOT 17 WAGON GEAR BUSINESS

Consists of lots 13-16
(10% Raise required to purchase as combination)



CULTIMULCHERS

- LOT 18 5' CULTIMULCHER (BUSINESS)** Raw Inventory/Parts \$2,199.03
- LOT 19 8' CULTIMULCHER (BUSINESS)** Raw Inventory/Parts \$5,589.31

LOT 20 CULTIMULCHER BUSINESS

Consists of lots 18-19 (10% Raise required to purchase as combination)



HOMESTEADER

LOT 21 HOMESTEADER BUSINESS

Consists of:
HOMESTEADER ATTACHMENTS:
- PLOW
- POTATO PLOW
- DISC
- CULTIVATOR
- HILLER
- HARROW

Raw Inventory/Parts
\$2,664.44



LOT 22 ECONOMY FORECART

Raw Inventory/Parts
\$303.46



LOT 23 ROTOVATOR

Raw Inventory/Parts
\$781.02



LOT 24 WALKING CULTIVATOR

Raw Inventory/Parts
\$894.74



LOT 25 2-ROW CULTIVATOR

Raw Inventory/Parts
\$13,591.72



LOT 26 TINE WEEDER

Raw Inventory/Parts
\$8,716.75



LOT 27 SPIKE TOOTH HARROW

Raw Inventory/Parts
\$1,560.25



LOT 28 SPRING TOOTH HARROW

Raw Inventory/Parts
\$3,962.55



LOT 29 BALE MOVER & UNROLLER

Raw Inventory/Parts
\$221.78



LOT 30 BALE MOVER



LOT 31 LOGGING CART

Raw Inventory/Parts
\$3,829.39



LOT 32 DUMP TRAILER



LOT 33 WORK SLED

Raw Inventory/Parts
\$1,073.05



LOT 34 EVENERS & NECK YOKES, CLEVIS

Raw Inventory/Parts
\$2,783.60



LOT 35 SLED RUNNERS

Raw Inventory/Parts
\$1,038.61



LOT 36 STEEL WHEELS

Raw Inventory/Parts
\$882.99



LOT 37 TOOLBOX

Raw Inventory/Parts
\$662.08



LOT 38 EQUIPMENT SEAT

NO IMAGE

NEW PIONEER EQUIPMENT

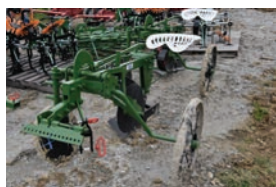
Ring 1



LOT 1001-1003

Sulky Plow

RH Sulky Plow with 14" #4 Keystone Bottom



LOT 1004-1007

Sulky Plow

RH Sulky Plow with 14" Oliver Bottom



LOT 1008

Footlift Plow

Footlift Plow with 14" #4 Keystone Bottom, coulter, tongue and neckyoke included



LOT 1009

Footlift Plow

Footlift Plow with 14" #5 Keystone Bottom, coulter, tongue and neckyoke included



LOT 1010

Footlift Plow

Footlift Plow with 14" #5 Keystone Bottom, coulter, less tongue



LOT 1011-1018

Footlift Plow

Footlift Plow with 14" #5 Keystone Bottom, coulter, tongue and neckyoke included



LOT 1019

Footlift Plow

Footlift Plow with 14" #4 Keystone Bottom, coulter, tongue and neckyoke included (Used Unit)



LOT 1021

Draft Forecart

Draft Forecart with air tires, guard, rubber torsions, mech brakes, bench seat & cushions, fenders, shafts & holdbacks, cargo tray & reese hitch receiver, & cup holder



LOT 1022-1030

Draft Forecart

Draft Forecart with air tires, guard, rubber torsions, mech brakes, seat & bracket, & tongue



LOT 1031-1035

Draft Forecart

Draft Forecart with 26" steel wheels, guard, rubber torsions, mech brakes, seat & bracket, & tongue



LOT 1036-1037

Draft Forecart

Draft Forecart with steel wheels, guard, straight axle, seat & bracket, & tongue



LOT 1038-1042

Draft Forecart

Draft Forecart with air tires, guard, straight axle, seat & bracket, & tongue



LOT 1043-1044

Haflinger Forecart

Haflinger Forecart with air tires, guard, rubber torsions, mech brakes, bench seat & cushions, shafts & holdbacks, fenders, cargo tray & reese hitch receiver & cup holder



LOT 1045-1047

Haflinger Forecart

Haflinger Forecart with air tires, guard, rubber torsions, mech brakes, seat & brackets, shafts & holdbacks



LOT 1048-1051

Haflinger Forecart

Haflinger Forecart with steel wheels, guard, rubber torsions, mech brakes, seat & brackets, & tongue



LOT 1052

Haflinger Forecart

Haflinger Forecart with air tires, guard, rubber torsions, mech brakes, seat & brackets, shafts & holdbacks



LOT 1053

Haflinger Forecart

Haflinger Forecart with air tires, rubber torsions, mech brakes, seat & brackets, shafts & holdbacks (Rental unit)



LOT 1055

Blade

7" Blade Kit, skid shoes, blade wings



LOT 1058-1059

Blade

7" Blade Kit, skid shoes



LOT 1060

Blade

7" Blade Kit



LOT 1061

Blade

7" Blade Kit, skid shoes - assembled (lot 1061 thru 1061-E are on 1 skid)



LOT 1062

Blade

7" Blade Kit, skid shoes - assembled (lot 1062 thru 1062-E are on 1 skid)



LOT 1063

Blade

7" Blade Kit - assembled (lot 1063 thru 1063-E are on 1 skid)



LOT 1064

Blade

7" Blade Kit - assembled (lot 1064 thru 1064-E are on 1 skid)



LOT 1065

Blade

7" Blade Kit - assembled (lot 1065 thru 1065-E are on 1 skid)



Ring 1

NEW PIONEER EQUIPMENT



LOT 1066

Blade

7' Blade Kit - assembled (lot 1066 thru 1066-E are on 1 skid)



LOT 1067

Blade

7' Blade Kit - assembled (lot 1067 thru 1067-E are on 1 skid)



LOT 1068

Blade

7' Blade Kit - assembled (lot 1068 thru 1068-E are on 1 skid)



LOT 1069

Blade

7' Blade Kit - assembled (lot 1069 thru 1069-E are on 1 skid)



LOT 1070

Blade

7' Blade Kit, skid shoes - assembled (lot 1070 thru 1070-E are on 1 skid)



LOT 1071-1076

Potato Plow

Potato Plow with Lift Kit for Forecart



LOT 1079-1082

PTO Cart

23 HP PTO Cart with air tires



LOT 1083

PTO Cart

LK-35 PTO Cart with air tires - 03221348



LOT 1084

PTO Cart

LK-35 PTO Cart with air tires - 03221349



LOT 1085

PTO Cart

LK-35 PTO Cart with air tires - 03221350



LOT 1086

PTO Cart

LK-35 PTO Cart with air tires - 03221352



LOT 1087

PTO Cart

LK-35 PTO Cart with air tires - 03221351



LOT 1088

PTO Cart

LK-45 PTO Cart - SN 12211329



LOT 1089

PTO Cart

LK-45 PTO Cart - SN 12211331



LOT 1090

PTO Cart

LK-45 PTO Cart - SN 12211330



LOT 1091

PTO Cart

LK-35 PTO Cart with no engine - 03221353



LOT 1092

PTO Cart

LD PTO Cart with no engine - 12211326



LOT 1093

PTO Cart

LD PTO Cart with no engine - 12211337



LOT 1094

PTO Cart

LD PTO Cart with no engine - 12211336



LOT 1095

PTO Cart

LD PTO Cart with no engine - 12211338



LOT 1096

PTO Cart

LD PTO Cart with no engine - 12211332



LOT 1097

PTO Cart

LD PTO Cart with no engine - 12211334



LOT 1098

PTO Cart

LD PTO Cart with no engine - 12211339



LOT 1101
3800 Gear

3800 Gear with air tires, beam standards, torsion axle, mech brakes w/lever & cable, & steel hafflinger shafts & holdbacks



LOT 1102
3800 Gear

3800 Gear with 20" steel wheels, beam standards, straight axle, steel hafflinger shafts & holdbacks

NEW PIONEER EQUIPMENT

Ring 1



LOT 1103
3800 Gear

3800 Gear with air tires, straight axle, steel draft shafts & holdbacks



LOT 1104
3800 Gear

3800 Gear with 24" steel wheels, beam standards, straight axle, steel draft shafts & holdbacks



LOT 1105
3800 Gear

3800 Gear with 20" steel wheels, straight axle, bolster springs, & tongue



LOT 1106
3800 Gear

3800 Gear with 20" steel wheels, beam standards, torsion axle, steel draft shafts & holdbacks



LOT 1107
3800 Gear

3800 Gear with air tires, straight axle, tongue



LOT 1108
9600 Gear

9600 Gear with air tires, beam standards, torsion axle, mech brakes w/ lever & cable, tractor tongue



LOT 1109
9600 Gear

9600 Gear with 28" steel wheels, beam standards, torsion axle, mech brakes w/ lever & cable, & tongue adaptor



LOT 1110
9600 Gear

9600 Gear with air tires, beam standards, torsion axle, & tongue adaptor



LOT 1111
9600 Gear

9600 Gear with 28" steel wheels, beam standards, straight axle, mech brakes w/ lever & cable, & wood draft tongue



LOT 1112-1113
9600 Gear

9600 Gear with 28" steel wheels, beam standards, straight axle, mech brakes w/ lever & cable, & tongue adaptor



LOT 1114
9600 Gear

9600 Gear with 28" steel wheels, straight axle, mech brakes w/ lever & cable, & tongue adaptor



LOT 1115
9600 Gear

9600 Gear with air tires, beam standards, straight axle, mech brakes w/ lever & cable, & tongue adaptor



LOT 1116-1117
9600 Gear

9600 Gear with 28" steel wheels, beam standards, straight axle, & wood draft tongue



LOT 1118
9600 Gear

9600 Gear with 28" steel wheels, straight axle, & tongue adaptor



LOT 1119-1121
9600 Gear

9600 Gear with air tires, beam standards, straight axle, & tractor tongue



LOT 1122
9600 Gear

9600 Gear with air tires, straight axle, & tongue adaptor



LOT 1124-1127
Fiberglass Bed

57x108 Fiberglass Bed with uprights & sideboards



LOT 1131-1137
5' Cultmulcher

5' Cultmulcher with tongue



LOT 1138-1139
8' Cultmulcher

8' Cultmulcher with front crumblers, groomer, & leveler



LOT 1140
8' Cultmulcher

8' Cultmulcher with front crumblers, groomer, leveler, tongue, doubletree, & neckyoke (Used Unit)



LOT 1143-1144
Homesteader Attachment

Homesteader Potato Plow Attachment



LOT 1145-1146
Homesteader Attachment

Homesteader Harrow Attachment



LOT 1147-1148
Homesteader Attachment

Homesteader Hiller Attachment



LOT 1149-1153
Homesteader Attachment

Homesteader Disc Attachment



LOT 1154-1160
Homesteader Attachment

Homesteader Cultivator Attachment



Ring 1

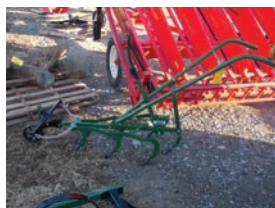
NEW PIONEER EQUIPMENT



LOT 1163-1168
Economy Forecart
Economy Cart with steel wheels, guard, seat & bracket, & steel hafflinger shafts & holdbacks



LOT 1169-1174
Economy Forecart
Economy Cart with air tires, guard, seat & bracket, & steel hafflinger shafts & holdbacks



LOT 1175-1177
Cultivator
Walking Cultivator



LOT 1179-1180
Cultivator
Produce Cultivator with steel wheels, straight tongue, 64" steel doubletree, & 64" steel eyebolt neckyoke



LOT 1181
Cultivator
Corn Cultivator with air tires (Slightly Used Unit)



LOT 1182
Cultivator
Produce Cultivator with air tires, straight tongue, 64" steel doubletree, & 64" steel eyebolt neckyoke



LOT 1183
Cultivator Shank Kit
Pumpkin Shank Kit for Cultivator, with two complete gangs to cultivate pumpkins



LOT 1184-1187
Cultivator Shank Kit
Basic Corn Shank Kit for Cultivator, with finger weeders & all shanks needed for corn



LOT 1188-1192
Cultivator Sprayer Attachment
Sprayer Attachment for Cultivator, with engine



LOT 1193-1196
Cultivator Sprayer Attachment
Sprayer Attachment for Cultivator, with battery



LOT 1197-1198
Spike Harrow
15' Spike Harrow with drawbar



LOT 1199
Spike Harrow
5' Spike Harrow with drawbar



LOT 1200
Spike Harrow
15' Spike Harrow with drawbar



LOT 1201
Spike Harrow
5' Spike Harrow with drawbar



LOT 1202
Spike Harrow
5' Spike Harrow, less drawbar



LOT 1203-1206
Spike Harrow
5' Spike Harrow with drawbar



LOT 1207-1210
Spike Harrow
10' Spike Harrow with drawbar



LOT 1211-1212
Spike Harrow
15' Spike Harrow with drawbar



LOT 1213
Spike Harrow
10' Spike Harrow with drawbar



LOT 1214-1217
Spring Harrow
5' Spring Harrow with drawbar & rakers



LOT 1218
Spring Harrow
10' Spring Harrow with drawbar & crumblers



LOT 1219-1224
Spring Harrow
10' Spring Harrow with drawbar & rakers



LOT 12,251,227
Bale Mover
Bale Mover & Unroller with air tires



LOT 1229-1231
Logging Cart
Logging Cart with steel wheels, guard, seat & bracket, scabbard, & tongue



LOT 1232-1235
Logging Cart
Logging Cart with steel wheels, guard, seat & bracket, & tongue

NEW PIONEER EQUIPMENT

Ring 1

**LOT 1236****Logging Cart**

Logging Cart with steel wheels, guard, seat & bracket, scabbard, & tongue

**LOT 1239-1242****Neckyoke**

36" Steel Ring Neckyoke, Qty = 4

**LOT 1243-1244****Neckyoke**

36" Steel Eyebolt Neckyoke, Qty = 4

**LOT 1245-1248****Neckyoke**

42" Steel Ring Neckyoke, Qty = 4

**LOT 1249-1251****Neckyoke**

64" Steel Eyebolt Neckyoke, Qty = 4

**LOT 1252-1254****Neckyoke**

40" Sliding Neckyoke, Qty = 4

**LOT 1255-1256****Evener**

42" Steel Doubletree, Qty = 4

**LOT 1257-1258****Evener**

64" Steel Doubletree, Qty = 4

**LOT 1259-1261****Evener Beam**

3 H, 55" Evener Beam, Qty = 4

**LOT 1262-1265****Evener Beam**

3 H heavy, 58" Evener Beam, Qty = 4

**LOT 1266-1267****Evener Beam**

4 H, 65" Evener Beam, Qty = 4

**LOT 1268****Evener Beam**

4 H heavy, 72" Evener Beam, Qty = 3

**LOT 1269-1270****Clevis**

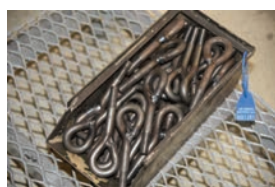
4" forged Evener Clevis with thumb bolt, Qty = 25

**LOT 1271-1274****Singletree**

Steel Singletree with loop, Qty = 4

**LOT 1275-1280****Singletree Hook**

7/16" Singletree Hook, Qty = 100

**LOT 1281****Eyebolt**

Eyebolt for neckyoke, Qty = 50

**LOT 1289-1291****Sled Runner**

Set of 2 Sled Runners with A5B Centers

**LOT 1292-1293****Sled Runner**

Set of 2 Sled Runners with P4B Centers

**LOT 1300****Cultipacker**

6' Cultipacker with transport wheel kit (Slightly Used Unit)

**LOT 1301****Steel Wheel**

1/4 x 5-1/2 x 28 A5BD Steel Wheel, Qty = 2

**LOT 1302-1303****Steel Wheel**

1/4 x 5-1/2 x 28 4B Steel Wheel, Qty = 2

**LOT 1304-1308****Steel Wheel**

1/4 x 5-1/2 x 28 5B Steel Wheel, Qty = 2

**LOT 1309****Steel Wheel**

1/4 x 5-1/2 x 28 A5BD Steel Wheel, Qty = 2

**LOT 1310-1312****Steel Wheel**

1/4 x 5-1/2 x 28 Centerless Steel Wheel, Qty = 2

**LOT 1313****Steel Wheel**

1/4 x 5-1/2 x 26 A5BD Steel Wheel, Qty = 2

**NEED
PHOTO**



Ring 1

NEW PIONEER EQUIPMENT



LOT 1314-1315

Steel Wheel

1/4 x 5-1/2 x 26 4B Steel Wheel,
Qty = 2



LOT 1317-1318

Steel Wheel

3/16 x 4 x 24 A5B Steel Wheel,
Qty = 2



LOT 1320

Steel Wheel

3/16 x 4 x 24 Centerless Steel
Wheel, Qty = 2



LOT 1321

Steel Wheel

3/16 x 4 x 20 P4B Steel Wheel,
Qty = 4



LOT 1322-1323

Steel Wheel

1/4 x 6-1/2 x 36 6B Steel Wheel,
Qty = 2



LOT 1324

Steel Wheel

1/4 x 6-1/2 x 36 8B Steel Wheel
with Cleats, Qty = 2



LOT 1325-1326

Steel Wheel

1/4 x 8 x 28 6B Steel Wheel, Qty
= 4



LOT 1327

Steel Wheel

1/4 x 8 x 28 5B Steel Wheel, Qty
= 2



LOT 1328

Steel Wheel

1/4 x 8 x 28 Centerless Steel
Wheel, Qty = 2



LOT 1329-1333

Wheelbarrow Wheel

3 x 16 Wheelbarrow Wheel with
5/8 x 6 hub, Qty = 10

Max Bid Program

Bidding agent Marty Troyer

1. Call the auction office 330-749-4362 and sign up as an absentee bidder for this auction.
2. Leave your Max bids (highest price you want to bid) on each item with Marty Troyer (phone or mail, using this catalog) and he will be your auction-day bidding agent.
3. Marty will bid on your behalf on auction day. Note: The auctioneer will not know what your max bids are, just to confirm that you can have confidence and absolutely trust your bidding agent.
4. If you are the winning bidder on any item you will be notified the following day by your bidding agent Marty Troyer.
5. You will be prompted to pay your invoice prior to or when you pick up your items.

Breakfast & Lunch will be available on-site on auction day-by Mrs. Yoder's Kitchen

TERMS

Payment Terms: cash, check, wire transfer (3% credit card processing fee)

Sales tax will be charged unless exempt

On-site: No Buyer's Premium

Max Bid Program (Bidding Agent): 5% Buyer's Premium

Online Bidding/Proxibid: 10% Buyer's Premium

Auctioneers: Dan Troyer, Eli Troyer, Steve Chupp, Stephen Yoder and others

Load Out Dates/Times:

Wednesday Dec. 28 after the auction - 6:00PM

December 29, 30 - 8:00AM - 4:00PM

December 31 8:00AM - 11:00AM

All items must be removed by 4:00PM on January 2. The lot is closed on Sunday

Please Direct all Inquiries to Air Works Auction

General Info: 330-749-4362 Office

Business Opportunities:

330-749-9478 Dan Troyer

330-749-5086 Reuben Troyer

New Machinery & Consignments:

330-749-7259 Emanuel Miller



*Join us for a truly unique
auction and exciting
opportunity!*

CONSIGNED EQUIPMENT**Ring 2 - 10:00 AM**

LOT 1501
Manure Spreader
Lancaster Manure Spreader, 85 bushel, 4 wheel, steel wheels, ground drive



LOT 1502
New Manure Spreader
Lancaster Manure Spreader, 125 bushel, air tires, PTO drive



LOT 1503
New Manure Spreader
Lancaster Manure Spreader, 85 bushel, 2 wheel, air tires, ground drive



LOT 1504
New Manure Spreader
Lancaster Manure Spreader, 50 bushel, 2 wheel, steel wheels, ground drive



LOT 1505
New Manure Spreader
Lancaster Manure Spreader, 50 bushel, 2 wheel, air tires, ground drive



LOT 1506
New Manure Spreader
Lancaster Manure Spreader, 25 bushel, 2 wheel, air tires, ground drive



LOT 1507
New Manure Spreader
Lancaster Manure Spreader, 25 bushel, 2 wheel, steel wheels, ground drive



LOT 1508
New Disc
Groffdale Disc, 4' with Tongue & Sulky Kit



LOT 1509
Fertilizer Spreader
Kirkwood Fertilizer Spreader, KS-50, 2 ton unit, air tires, (like new, was used a few times)



LOT 1510
New Hay Tedder
Esch Tedder, 18' engine drive, hydraulic lift, SN 221384



LOT 1511
New Hay Tedder
Enorossi Tedder, 19' PTO drive, hydraulic lift, SN 202101321



LOT 1512
New Hay Tedder
Enorossi Tedder, 17' PTO drive, hydraulic lift, SN 202200203



LOT 1513
New Hay Rake
Enorossi Rotary Rake, 13' 9", PTO drive, pull type unit w/11 arms w/4 tines per arm, SN 20220916



LOT 1514
New Hay Rake
Enorossi Rotary Rake, 13' 9", PTO drive, pull type unit w/11 arms w/4 tines per arm, SN 202200925



LOT 1515
New Hay Rake
Enorossi Wheel Rake, 8 wheel unit w/kicker wheel, SN N16299R02-06



LOT 1516
New Hay Rake
Enorossi Wheel Rake, 10 wheel unit w/kicker wheel, SN N16299R03-01



LOT 1517
New Tiller
Maschio Tiller, C230, 93" 3 point unit w/PTO shaft, SN MCC510986



LOT 1518
New Tiller
Maschio Tiller, C230, 93" tiller w/Pioneer 2 wheel tongue unit, break shanks and cage roller SN MCC510985



LOT 1519
New Tiller Maschio Tiller, B155, 63" 3 point tiller w/PTO shaft, SN NCC 501398



LOT 1520
Elevator Bowman Elevator, 26' with undercarriage and electric motor (like new, was used a few times)

1521 New Old Style Bale Mover

1522 Oliver Plow Bottom, 16in right hand

1523 Plow Bottom Attachment for Homesteader

1524 Pioneer footlift sulky plow w/kv bottom and cutter

1525 2018 Pioneer rock plow -leaf spring trip, 16in right hand, like new

1526 Pioneer 4ft cultmulcher w/front crumbler

1527 Pioneer steering produce forecart

1528 Pioneer cultivator attachment for produce forecart

1529 Walking cultivator

1530 2 = 3 horse evener beam

1531 42in Double Tree

1532 36in double tree

1533 Single tree w/loop

1534 4 horse evener beam

1535 Box of clevis's, pins, etc.

1536 6 tongues painted

1537 2 tongues unpainted

1538 Cultivator produce deluxe kit, includes straight tongue, 64in double tree, 64in neck yoke

1539 2 tool boxes

1540 blade

1541 4 - 28in steel wheels, 6 bolt w/drum

1542 4 - 24in steel wheels, 4 bolt w/rubber tire, bolted

1543 4 - 26in steel wheels, 6 bolt w/rubber tire, bolted

1544 6 - 26in steel wheels, 5 bolt w/rubber tire, bolted

1545 4 - 20in steel wheels, 4 bolt w/rubber tire, bolted

1546 2 - 26in steel wheels, 6 bolt w/rubber tire, bolted, w/drum

1547 4 - 28in steel wheels, 6 bolt

1548 1 set blade skid shoes

1549 1 set rope hitch, 4 up

**Not a Complete
List-
More
Consignments
added Daily**



Ring 2

FABRICATION EQUIPMENT



LOT 301
JD Engine Set up with Generator
Engine Model # 6081AF001|Serial # RG6081A110858|HRS 31,415|270 HP|Generator Mounted on Engine|Marathon -Lima Mac|3phase 480volt|175KW



LOT 302
Fuel Tank
275 Gallon Metal Diesel Fuel Tank



LOT 303
Warner Swasey Lathe
3 Lathe With cabinet and tooling |Set up for hydraulic



LOT 304
Piranaha Ironworker
Model P-50 |50 Ton Set up to use Hydraulics



LOT 305
Air Riveter
Used for Brake bands



LOT 306
Twister
Used to roll brake bands|Form neckyoke rings|Set up for hydraulic



LOT 307
Swedger
Used to form top of guard pipe|Set up for electric



LOT 308
Electric Sander
Set Up for single phase 240



LOT 309
Small drill press
Used for brake bands|Set up for electric



LOT 310
Walk behind forklift
Battery Operated 3000 to 6000# capacity



LOT 311
Miller Welder
452 Delta Weld Set up for 480 3 Phase electric



LOT 312
Miller Welder
350P



LOT 313
Miller Welder
wire feeder



LOT 314
Flextur welding table
4 X 4 Table



LOT 315
Ammco Wheel Lathe
Wheel and Brake drum lathe



LOT 316
Shrink Wrapping Machine
Machine used to shrink wrap tongues



LOT 317
Heavy Duty Workbench
32 x 108 with «? top|With drawer cabinet



LOT 318
Heavy Duty Workbench
32 x 108 with «? top



LOT 319
Forge
Small Propane



LOT 320
Tongue Storage Unit
Unit on wheels and with Cover



LOT 321
Wagon On Air Tires
Used to transport wooden tongues on the road



LOT 322
Metal Turn Table
6 Trays



LOT 323
Steel Shelves
3' Wide x 7' High lots of drawers in this one!



LOT 324
Steel shelves
36" Deep x 60" Wide x 138" High



LOT 325
Steel shelves
36" Deep x 60" Wide x 138" High

PARTS & ACCESSORIES

Ring 2



LOT 401-422
Plow Bottom
14" Keystone #5 RH
Plow Bottom with
Short Landside



LOT 424-429
Plow Bottom
14" Oliver RH Plow
Bottom with Long
Landside



LOT 430-440
Plow Bottom
14" Oliver RH Plow
Bottom with Short
Landside



LOT 441
Plow Bottom
14" Oliver RH Plow
Bottom with Long
Landside & Heel



LOT 442-443
Plow Bottom
14" Keystone #4 RH
Plow Bottom with
short landside



LOT 444-448
Plow Bottom
12" KV RH Plow Bot-
tom, with moldboard
extension & cover-
board, less landside



LOT 449-452
Plow Bottom
16" KV LH Plow Bot-
tom, less landside,
moldboard extension
and coverboard



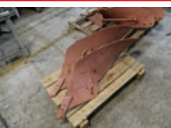
LOT 453-458
Plow Bottom
12" KV RH Plow Bot-
tom, less landside,
moldboard extension
and coverboard, Qty
= 3



LOT 459-462
Plow Bottom
12" KV RH Plow Bot-
tom, less landside,
moldboard extension
and coverboard, Qty
= 2



LOT 463-466
Plow Bottom
12" KV LH Plow Bot-
tom, less landside,
moldboard extension
and coverboard, Qty
= 3



LOT 467
Plow Bottom
12" KV LH Plow Bot-
tom, less landside,
moldboard extension
and coverboard, Qty
= 2



LOT 501
Share
12" Keystone Share,
Qty = 10, 2 RH, 8 LH



LOT 502-503
Share
14" LH Keystone
Share, Qty = 4



LOT 504-512
Share
16" LH Keystone
Share, Qty = 4



LOT 513-517
Share
16" RH Keystone
Share, Qty = 4



LOT 518-519
Shin
LH Keystone Shin,
Qty = 4



LOT 520
Shin
RH Keystone Shin,
Qty = 4



LOT 521-525
Landside
Keystone Short
Landside, Qty = 4



LOT 526-528
Landside
Keystone Long
Landside, Qty = 4



LOT 529
Point
Keystone LH
Reversible Point, Qty
= 50, bolt packages
included



LOT 530-537
Point
Keystone LH Revers-
ible Point, Qty = 50



LOT 538
Point
Keystone RH Revers-
ible Point, Qty = 33



LOT 539
Extension
Keystone LH Mold-
board Extension,
Qty = 5



LOT 540
Extension
Keystone RH Mold-
board Extension,
Qty = 4



LOT 541-542
Heel
Keystone LH Heel,
Qty = 4, bolt packag-
es included



LOT 543
Heel
Keystone RH Heel,
Qty = 4



LOT 544
Moldboard
14" & 16" #5 Keystone
LH Moldboard, Qty
= 3, bolt packages
included



LOT 545
Moldboard
14" & 16" #5 Keystone
RH Moldboard with 4
braces w/ moldboard
attachment, Qty = 4,
bolt packages included



LOT 546
Coverboard
Keystone LH Cover-
board, Qty = 7, bolt
packages included



LOT 547
Coverboard
Keystone LH
Coverboard with
bracket, Qty = 6, bolt
packages included



LOT 548
Coverboard
Keystone RH Cover-
board with bracket,
Qty = 2



LOT 549
Moldboard
12" KV LH Moldboard,
Qty = 2, bolt packag-
es included



LOT 550
Moldboard
12" KV RH Moldboard,
Qty = 3



LOT 551-553
Share
NB-12-3-LRS, 12"
share, Qty = 12, bolt
packages included



LOT 554-555
Share
NB-12-3-RS, 12" share,
Qty = 12, bolt pack-
ages included



LOT 556-558
Share
NB-14-4-LRS, 14"
share, Qty = 24, bolt
packages included



LOT 559-560
Share
NB-14-4-LRS, 14"
share, Qty = 24



LOT 561-565
Share
NB-14-4-RS, 14"
share, Qty = 24



LOT 566-569
Share
NB-16-4-LRS, 16"
share, Qty = 18



LOT 570-571
Share
NB-16-4-RS, 16"
share, Qty = 24



LOT 572-573
Shin
Oliver LH Shin, Qty
= 12, bolt packages
included



LOT 574-576
Shin
Oliver RH Shin, Qty
= 15, bolt packages
included



Ring 2

PARTS & ACCESSORIES



LOT 577-580
Landside
Oliver RH Short Land-side, Qty = 8



LOT 581-583
Landside
Oliver RH Long Land-side, Qty = 8



LOT 584-585
Landside
Oliver LH Long Land-side, Qty = 10



LOT 586
Landside
Oliver LH Long Land-side, Qty = 7



LOT 587-594
Coverboard
Oliver & JD LH Cover-board, Qty = 10



LOT 595
Coverboard
Oliver & JD RH Cover-board, Qty = 10



LOT 596-597
Heel
Oliver LH Heel, Qty = 10



LOT 598-560
Heel
Oliver RH Heel, Qty = 6



LOT 601
Heel
KV LH Heel, Qty = 10



LOT 602-603
Heel
KV RH Heel, Qty = 12



LOT 604-607
Coulter Blade
4 bolt Coulter Blade, Qty = 25



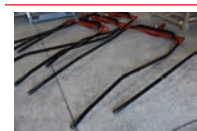
LOT 651-654
Bench Seat
Draft Bench Seat & Black Cushions with Cover



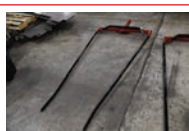
LOT 655-658
Bench Seat
Draft Bench Seat & Black Cushions



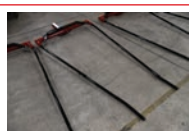
LOT 659-661
Bench Seat
Haflinger Bench Seat & Black Cushions



LOT 662-666
Cart Shafts
Draft Shafts for Summit Cart



LOT 667-670
Cart Shafts
Haflinger Shafts for Summit Haflinger Cart



LOT 671-677
Cart Shafts
Haflinger Shafts for Summit Draft Cart



LOT 678
Cart Tongue
Summit Draft Cart Tongue, Qty = 4



LOT 679
Cart Tongue
Summit Draft Cart Tongue, Qty = 3



LOT 680
Cart Tongue
Summit Haflinger Cart Tongue, Qty = 2



LOT 681-684
Tongue Bracket
2.5" Offset Tongue Bracket, Qty = 4



LOT 685-686
Tongue Bracket
2" Offset Tongue Bracket, Qty = 2



LOT 687-691
Tongue Bracket
Old Style Raised Cart Tongue Bracket, Qty = 2



LOT 692-694
Wood Tongue
14" Wood Tongue, less hardware for Draft Cart, Qty = 5



LOT 695-706
Seat
Implement Seat, Qty = 5



LOT 707
Potato Plow
Potato Plow Attachment for Forecart



LOT 708-709
Fender Kit
Summit Draft Cart Fender Kit



LOT 710-711
Hitch Receiver
Reese Hitch Receiver, Qty = 4



LOT 712-717
Cupholder
Cupholder, Qty = 5



LOT 718-722
Leaf Spring
1-1/4"x24" Full 2 Leaf Bench Seat Spring, Qty = 4



LOT 723-727
Brake Band
8" Brake Band, Qty = 10, 5 RH, 5 LH



LOT 728-729
Brake Band
6" Brake Band, Qty = 10, 5 RH, 5 LH



LOT 730-733
Hub & Spindle
450 - 4Bx5.0 bolt circle Hub Assy & 1.625x10.00 - 450 hub Spindle, Qty = 4



LOT 734-735
Spindle
1.625x10.00 - 450 hub Spindle, Qty = 13



LOT 736-737
Hub & Spindle
555 - 5Bx5.5 bolt circle Hub Assy & 1.625x10.00 - 555 hub Spindle, Qty = 3



LOT 738
Hub & Spindle
555 - AG 5 bolt Hub Only & 1.625x10.00 - 555 hub Spindle, Qty = 3



LOT 739
Hub & Spindle
555 - AG 5 bolt Hub Only & 1.625x10.00 - 555 hub Spindle, Qty = 4



LOT 740
Spindle
1.625x10.00 - 555 hub Spindle, Qty = 13



LOT 741-744
Steel Tongue
2" Haflinger Tongue, Qty = 3



LOT 771-773
Stabilizer
Stabilizer for PTO Cart, Qty = 5



LOT 774
Seat Bracket
Tractor Seat Bracket, Qty = 5



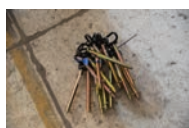
LOT 775
Spring Lift Kit
Spring Lift Kit for PTO Cart, Qty = 4

PARTS & ACCESSORIES

Ring 2



LOT 776-780
Stabilizer Clamp
6" Stabilizer Clamp,
Qty = 5



LOT 781-782
Hitch Pin
5/8x6-1/4 Hitch Pin
with Rigid Black
Handle, Qty = 15



LOT 783-784
Rim & Tire
6on5.5 15x6 White
Spoke Rim &
ST225/75R15DB Tire
Wheel, Qty = 8



LOT 785-788
Brake Pedal Assy
Hydraulic Brake
Pedal Assy, Qty = 8



LOT 789
Hydraulic Brake
Parts
Misc. Parts for PTO
Hydraulic Brake



LOT 801-812
Steel Tongue & Bracket
Raised Draft Tongue
& Bracket for 3800 &
4700 Gear



LOT 813-814
Wood Tongue
Wood Haflinger
Tongue for 3800 Gear



LOT 815-818
Hub Assy
440 - 4Bx4.0 bolt
circle Hub Assy, Qty
= 4



LOT 819-823
Steel Tongue & Bracket
Raised Draft Tongue
& Bracket for 9600
Gear



LOT 825-828
Wood Tongue
Wood Draft Tongue,
less hardware for
4700 & 9600 Gear,
Qty = 5



LOT 829-830
Tongue Cap
Tongue Cap with
safety, Qty = 10



LOT 831-834
Tongue Cap
Tongue Cap, Qty = 10



LOT 835-842
Coil Spring
C.313x2.22x6.5 Med
Coil Spring, Qty = 100
(was used for 4700 &
9600 wagon bolster
springs)



LOT 851, 853
**Groomer Attach-
ment**
Groomer Attachment
for 8' Cultimulcher



LOT 854-857
Leveler Attachment
Leveler Attachment
for 8' Cultimulcher



LOT 858-860
S-Tines
32X10MM S-Tine for
Cultimulcher, Qty
= 100



LOT 861-862
Sweeps
4" Sweep for Culti-
mulcher, Qty = 100



LOT 871-972
S-Tines
25X8MM S-Tine for
Homesteader, Qty
= 50



LOT 875-876
Finger Weeders
Finger Weeders for
Cultivator, 6 LH & 6
RH units and 12- 2"
clamps included



LOT 877-879
Sweeps
8" Sweep for Culti-
vator, Qty = 100



LOT 885-888
Points
2" x 11" Reversible
Point for Spring
Harrow, Qty = 50



LOT 891-893
Side Extensions
11" Side Extension Kit
for Sled



LOT 895-914
Clevis
4" forged Evener
Clevis with thumb
bolt, Qty = 25



LOT 921
Wheel rim
WHEEL RIM (1/4 X
6-1/2 X 38, TP, Qty
= 30



LOT 922
Bearing
BEARING (5/8 preci-
sion, Qty = 100



LOT 923
Bearing
BEARING (3/4 preci-
sion, Qty = 100



LOT 924-926
Bearing
BEARING (3/4 HD SP
wheelbarrow, Qty
= 50



LOT 951
Carriage wheel
2 - 36" & 2 - 40"
(Used) Steel Carriage
Wheels with CMS
hub & Flat Steel Rim



LOT 952-955
Carriage wheel
2 - 44" Steel Carriage
Wheels with CMS
hub & 1/2 Round
Rubber Rim



LOT 956
Carriage wheel
2 - 36" Steel Carriage
Wheels with CMS
hub & 1/2 Round
Steel Rim on Low
Profile Rubber



LOT 957
Carriage wheel
3 - 42" Steel Carriage
Wheels with Long
hub & Flat Steel
Rim on Low Profile
Rubber



LOT 958
Carriage wheel
2 - 38" Steel Carriage
Wheels with Long
hub & 1/2 Round
Rubber Rim



LOT 959
Carriage wheel
2 - 32" Steel Carriage
Wheels with CMS
hub & 1/2 Round
Rubber Rim



LOT 960
Carriage wheel
2 - 36" Steel Carriage
Wheels with Long
hub & Flat Steel
Rim on Low Profile
Rubber (Used)



LOT 961
Carriage wheel
1 - 36" Steel Carriage
Wheel with Long
hub & Flat Steel Rim
(Used)



LOT 962
Carriage wheel
1 - 42" Steel Carriage
Wheel with CMS hub
& 1/2 Round Rubber
Rim



LOT 963
Carriage wheel
1 - 36" Steel Carriage
Wheel with CMS hub
& Flat Steel Rim on
Low Profile Rubber



LOT 964
Carriage wheel
1 - 32" Steel Carriage
Wheel with CMS hub
& Flat Steel Rim



LOT 966
Carriage wheel
1 - Steel Carriage
Wheel with Long hub
& Flat Steel Rim on
Low Profile Rubber

**SELLING FOUR WAGONS OF
UNCATALOGED PARTS AND
ACCESSORIES**

Auctioneer Notes

Gentlemen, the opportunities are big and I must say that never before in the agriculture market has the Air Works Auction had the opportunity to present and offer so many diversified opportunities in one day as we will on December 28th in Mt Hope, Ohio.

The opportunities on the business aspect of the product lines is big in many ways. Pioneer equipment was known as the innovative leader of horse drawn farm machinery for over 44 years and has proven and tested lines of equipment that can be purchased at auction to add to your existing business or to start your new business as a former Pioneer equipment product line with the knowledge that you own a highly engineered, tested and proven product line with many happy customers from the 44 plus bygone years of being in the industry. Keep in mind: the engineered CAD drawings will be included so you can get parts Lasered, and CNC milled out for you by high capacity machine shops if you so desire. Just one of the many ways to take advantage of these business opportunities.

We will also offer at auction a couple hundred pieces of brand-new equipment, The last of the original Pioneer pieces to come off the Pioneer production line will be offered, so be sure to take advantage of this opportunity to buy that piece of Pioneer equipment that you've been waiting for or planning for this coming spring.

We also have 500 plus lots of plow bottoms & parts and accessories along with new and used consigned equipment, and then also the fabrication equipment and supplies. This is what is cataloged and it is hard telling what all will be added to the auction by the time December 28th arrives.

Both breakfast and lunch will be served onsite, so come by Miss Yoder's Kitchen.

This will be a 3-ring full-day auction that will start at 9am sharp. Bring a friend and a trailer(s) and we hope you enjoy the sale.

Dan Troyer

Air Works Auction





PIONEER EQUIPMENT INC.

Product Line Dispersal Auction
Wednesday December 28, 2022
Mt. Hope Event Center
8076 SR 241 Millersburg, OH 44654
(In Mt. Hope)



BUSINESS OPPORTUNITIES • NEW PIONEER MACHINERY
USED PIONEER MACHINERY
PIONEER PARTS & ACCESSORIES • FABRICATION EQUIPMENT



PO Box 242
Kidron OH 44636

Wednesday December 28th, 2022

Mt. Hope Event Center • 8076 SR 241 Millersburg, OH 44654 (In Mt. Hope)

**BUSINESS OPPORTUNITIES • NEW PIONEER MACHINERY • USED PIONEER MACHINERY
PIONEER PARTS & ACCESSORIES • FABRICATION EQUIPMENT**

Auction Starting 9:00 AM - Business Opportunities to sell first, followed by New Pioneer Equipment, Used Pioneer Equipment, Fabrication Equipment, Parts & Accessories, several wagon loads of small items.

Truly a unique opportunity to purchase viable and profitable business segments of an iconic brand. Pioneer has been an agricultural industry leader in innovation and quality for over 40 years. Every product line being offered has undergone hours of engineering and testing. This is how Pioneer created a trusted brand with products that have been proven to perform year after year. Some products will be offered individually while some, such as plows, forecarts, PTO carts and others will be offered separately then combined as one offering.

HOTELS

Sleep Inn & Suites Mt. Hope 330-294-9977
Berlin Grand Hotel 330-403-3050
Berlin Encore Hotel & Suites 888-988-2414
Comfort Suites 330-729-5645



330-749-7259 • AirWorksAuction.com • sales@airworksauktion.com